



# The Bretton Woods



Northeastern Log Homes

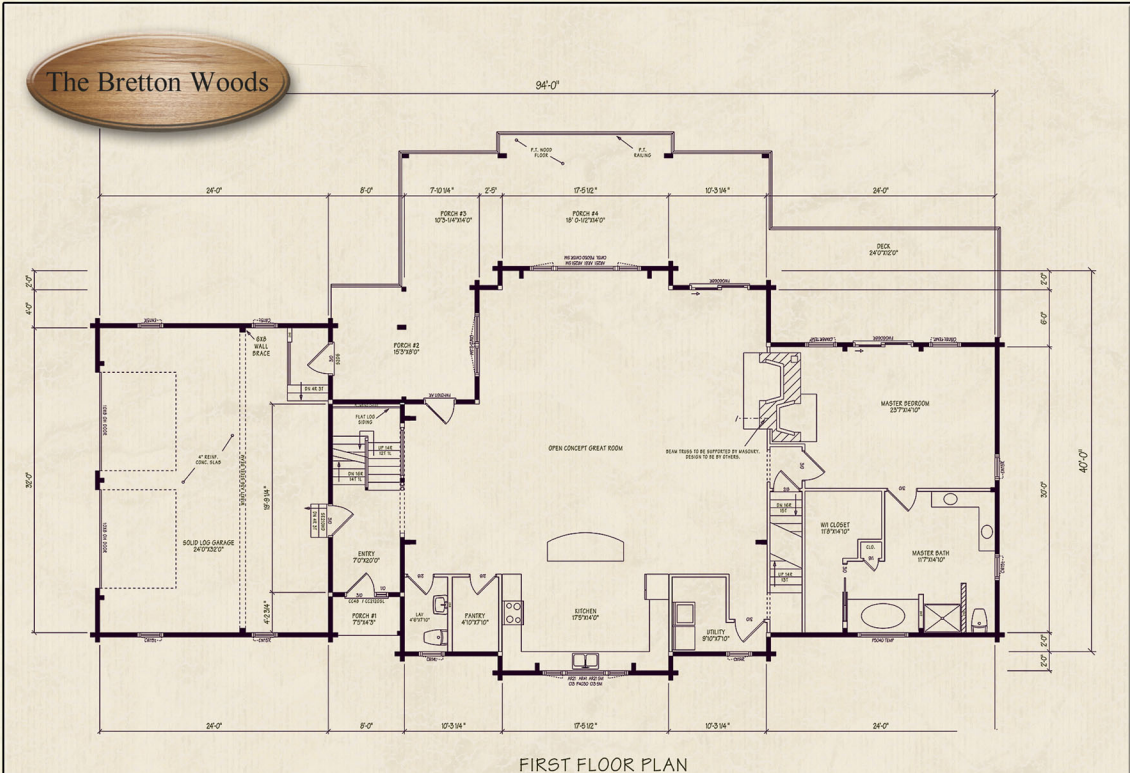
[info@northeasternlog.com](mailto:info@northeasternlog.com) 800-624-2797 [www.northeasternlog.com](http://www.northeasternlog.com)

\*Artist's rendering, photography and optional design ideas may vary from the standard model. Please always consult the standard floorplan and refer to the Premier Home Series material list as to what is included.





# The Bretton Woods



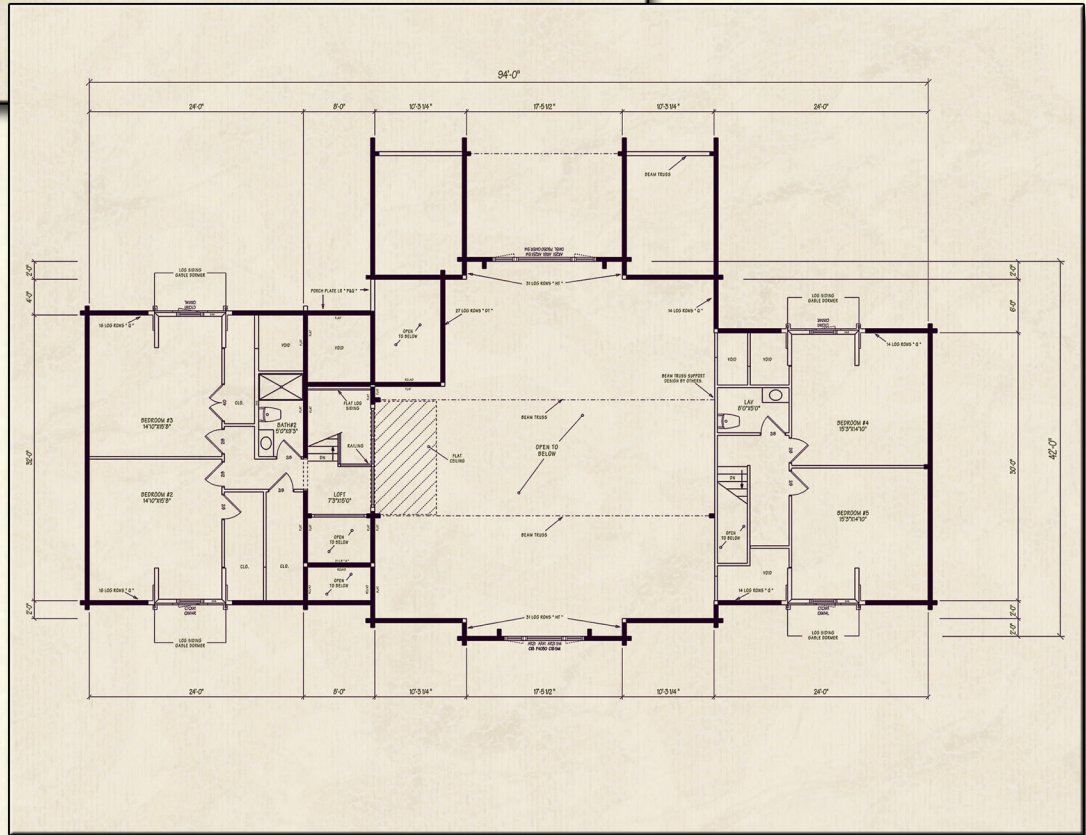
Premier Home Series  
 -----  
 44' x 94' Size  
 -----  
 4,075 Square Feet  
 -----  
 Five Bedrooms  
 -----  
 Four Baths  
 -----  
 Material Package Price  
 available for download on  
 the website

**Optional Design Ideas:**

Build in pull out drawers in the areas of the second floor bedrooms adjacent to the dormers. It becomes an instant piece of furniture

Bring one end of the "U" shaped kitchen out further...now this can give terrific space to generate an eat-in breakfast bar

Take a portion of that north end of the Washer/Dryer area and devote that instead to a large double door closet. Also, consider swinging the pantry door out to the main room for use of the rear of that door as canning storage



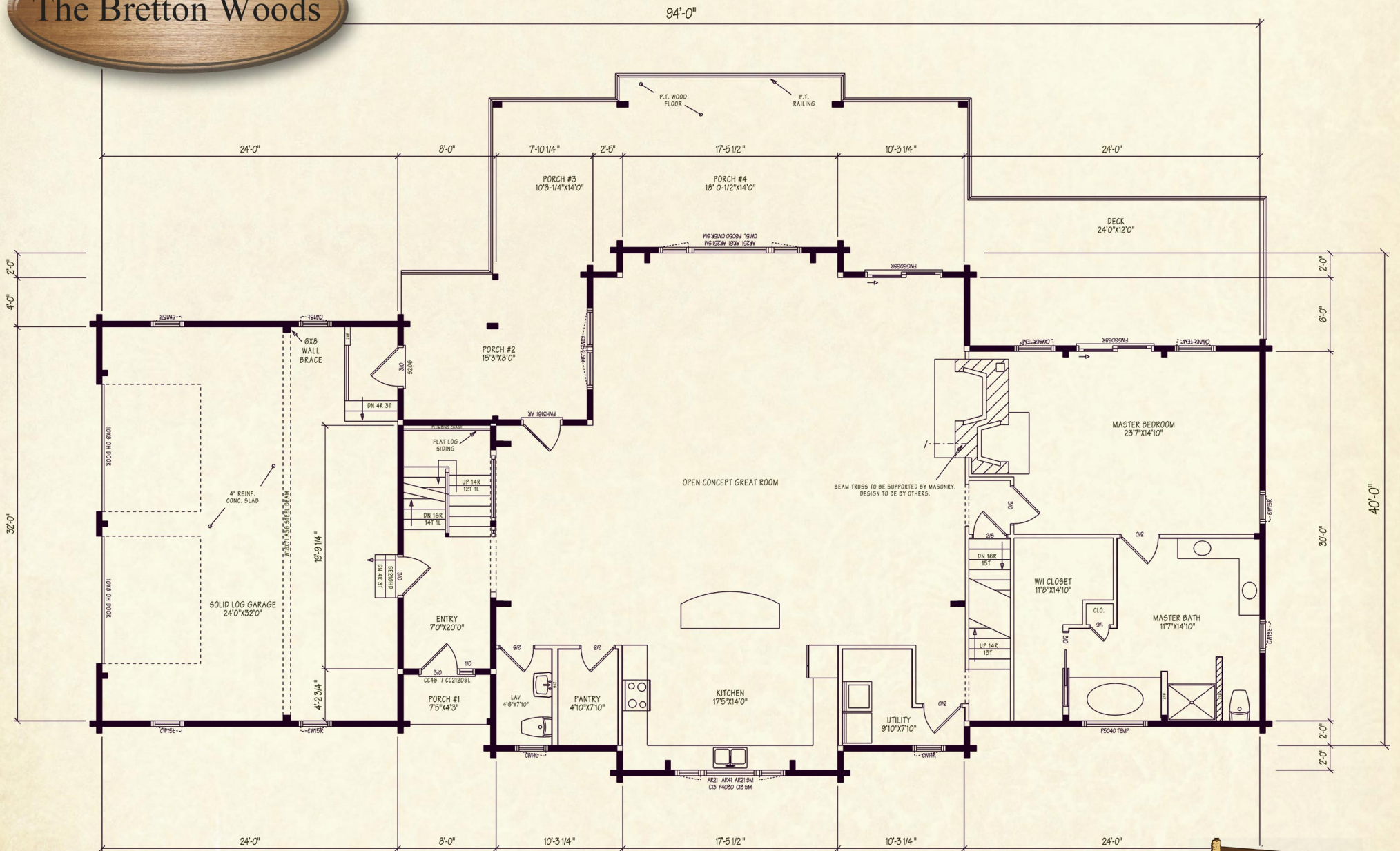
Northeastern Log Homes

info@northeasternlog.com 800-624-2797 www.northeasternlog.com

\*Artist's rendering, photography & optional design ideas may vary from the standard model. Please always refer to the standard floorplan and consult the Premier Home Series Material List as to what is included. All plans, photography and images copyright NLH 2016



# The Bretton Woods



FIRST FLOOR PLAN

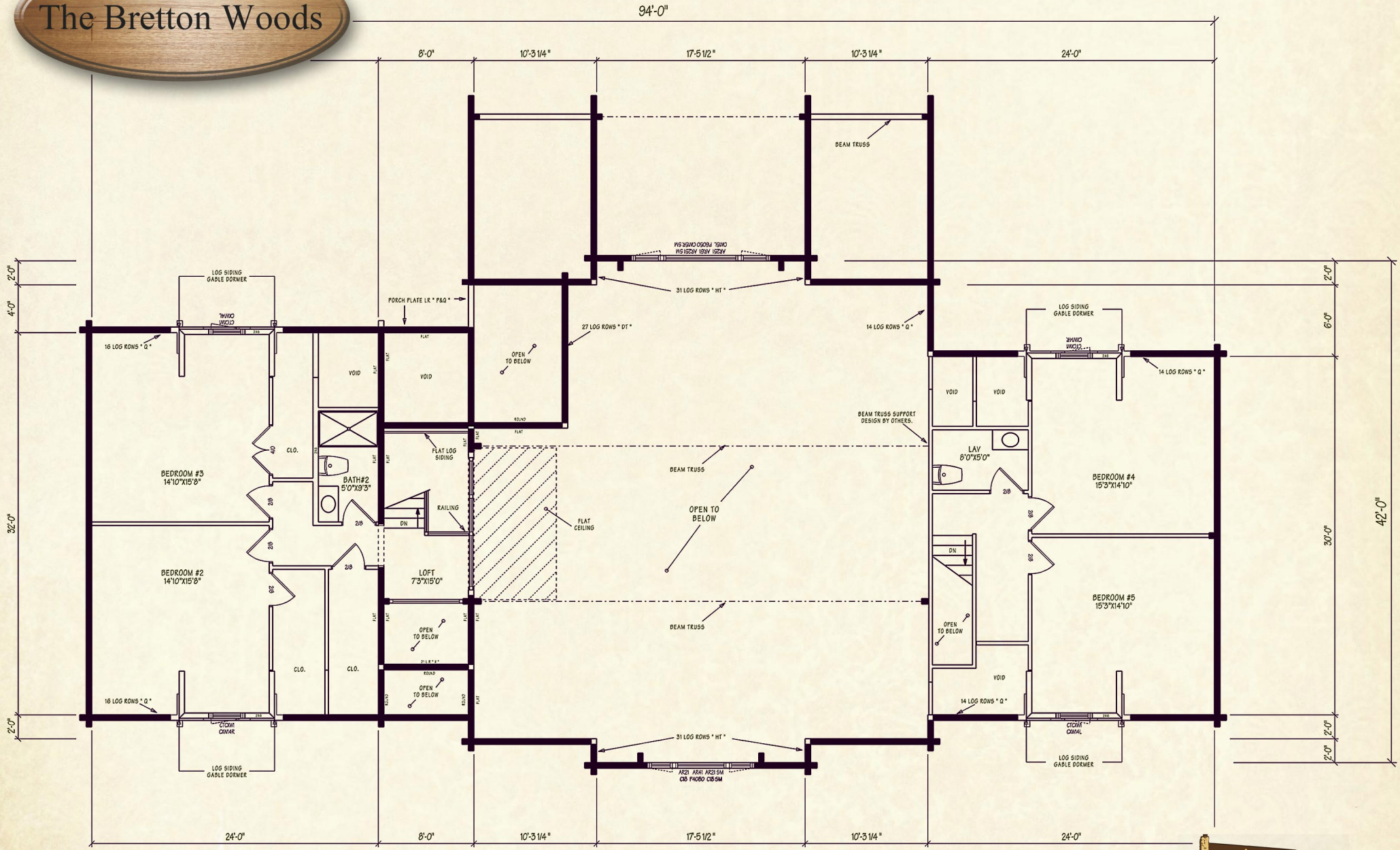
2293 SQ. FT.



**NORTHEASTERN**  
LOG HOMES



# The Bretton Woods



**NORTHEASTERN**  
LOG HOMES