



The Bartlett



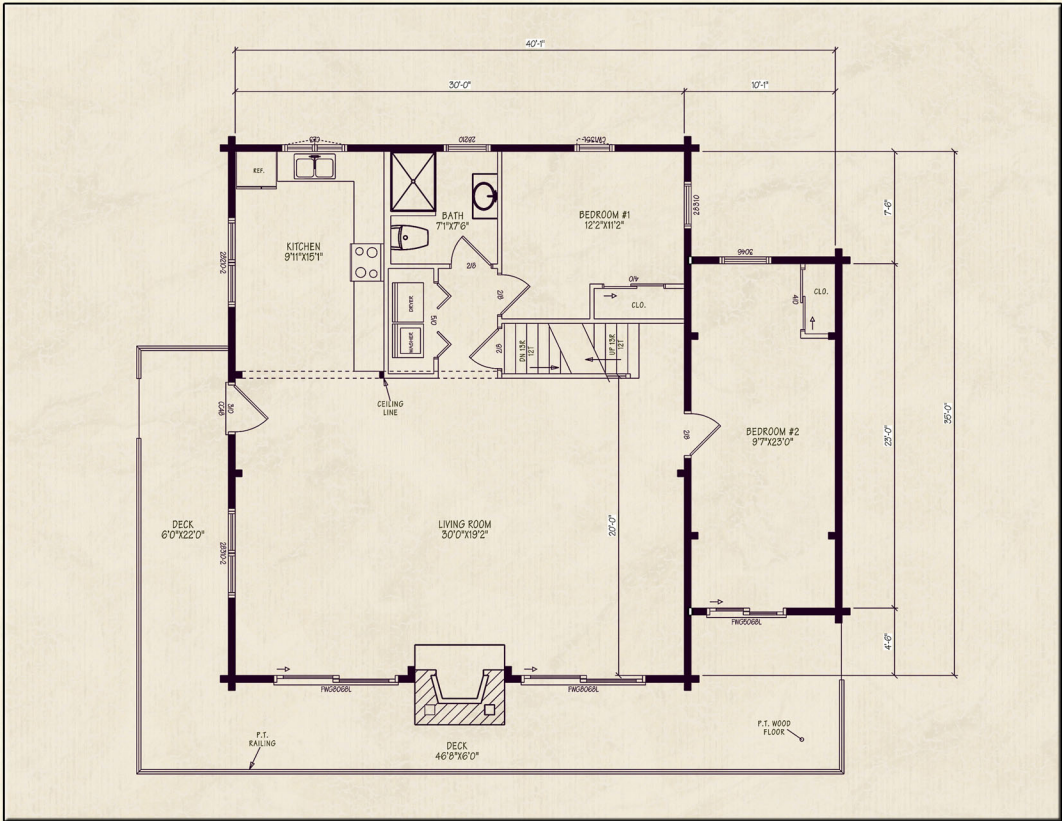
Northeastern Log Homes

info@northeasternlog.com 800-624-2797 www.northeasternlog.com

*Artist's rendering, photography and optional design ideas may vary from the standard model. Please always consult the standard floorplan and refer to the Premier Home Series material list as to what is included.



The Bartlett



Premier Home Series

 40' x 35' Size

 1,682 Square Feet

 Three Bedrooms

 Two Baths

 Material Package Price
 available for download on
 the website

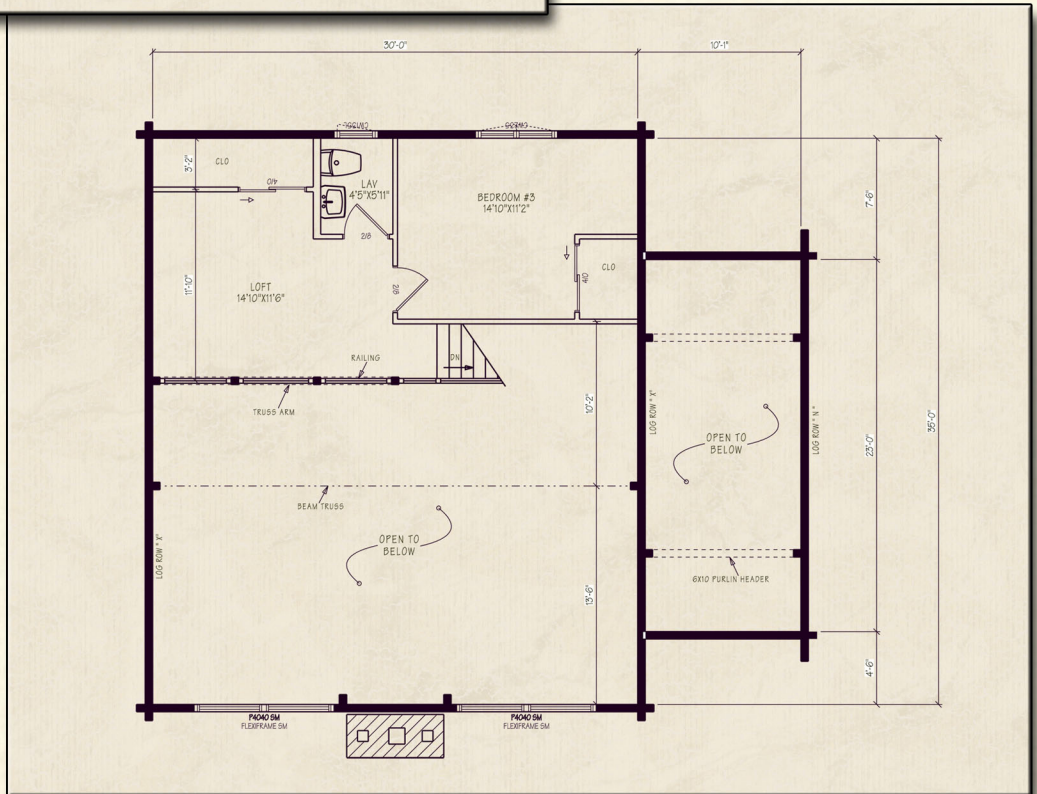
Optional Design Ideas:

Build in pull out drawers in the small storage areas of the second floor bedroom. It becomes an instant piece of furniture

Consider a stackable Washer/Dryer. Now, you can have a terrific additional coat closet or pantry area

Grow the closet size in the two first floor bedrooms for larger storage areas. Especially in bedroom #1, the enlarged space for the southern wall closet can be used to create a closet at the base of the stairs.

The deck along the front can be enlarged to as dramatic a size as you can imagine! Perfect for a lakeside or mountainview getaway.

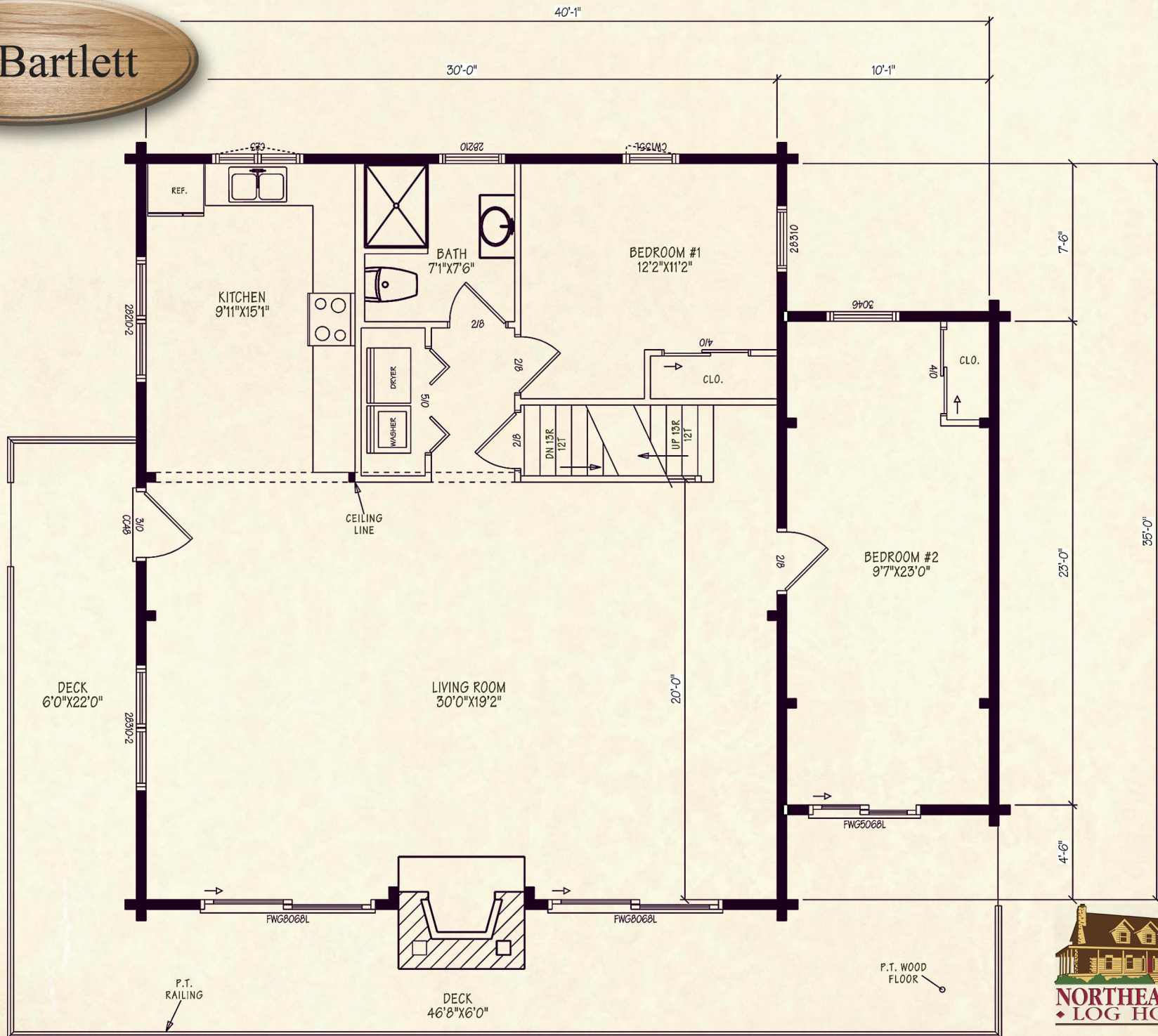


Northeastern Log Homes

info@northeasternlog.com 800-624-2797 www.northeasternlog.com

*Artist's rendering, photography & optional design ideas may vary from the standard model. Please always refer to the standard floorplan and consult the Premier Home Series Material List as to what is included. All plans, photography and images copyright NLH 2016

The Bartlett



**NORTHEASTERN
LOG HOMES**

The Bartlett

