



The Ashford

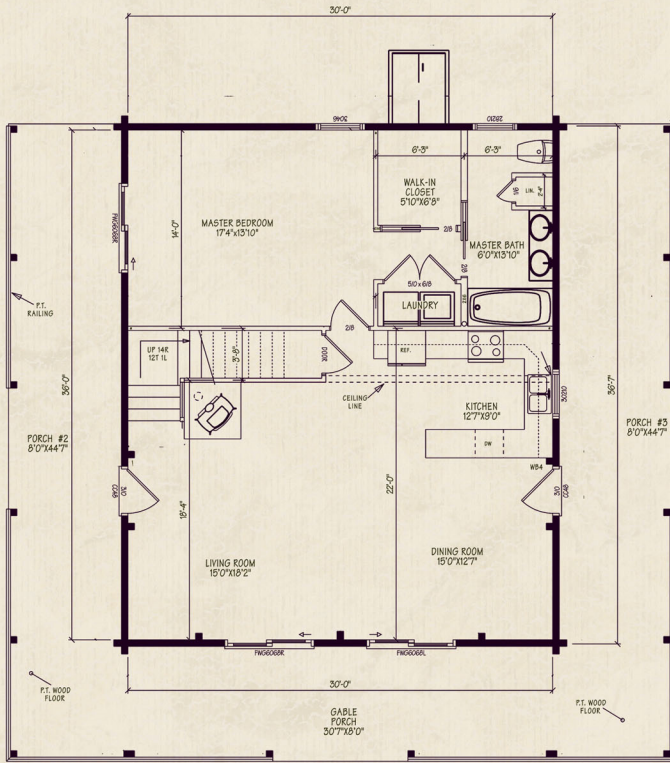


Northeastern Log Homes
info@northeasternlog.com 800-624-2797 www.northeasternlog.com

*Artist's rendering, photography and optional design ideas may vary from the standard model. Please always consult the standard floorplan and refer to the Premier Home Series material list as to what is included.



The Ashford



Premier Home Series

30' x 36' Size

1,675 Square Feet

Two Bedrooms

2 Baths

Download Plan Pricing
Sheets at
Northeasternlog.com

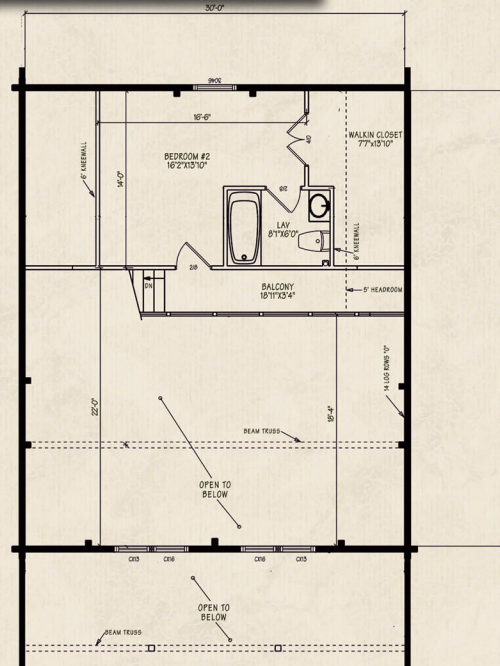
Optional Design Ideas:

Install windows instead of Frenchwood doors along the front of the first floor. Then, you can build in beautiful bench seating for the main living area

Put a dormer on the second floor right side for full bath and Walk-In closet area on that upstairs bedroom

Balcony area can be extended over the kitchen to the other beam truss for a stunning loft area

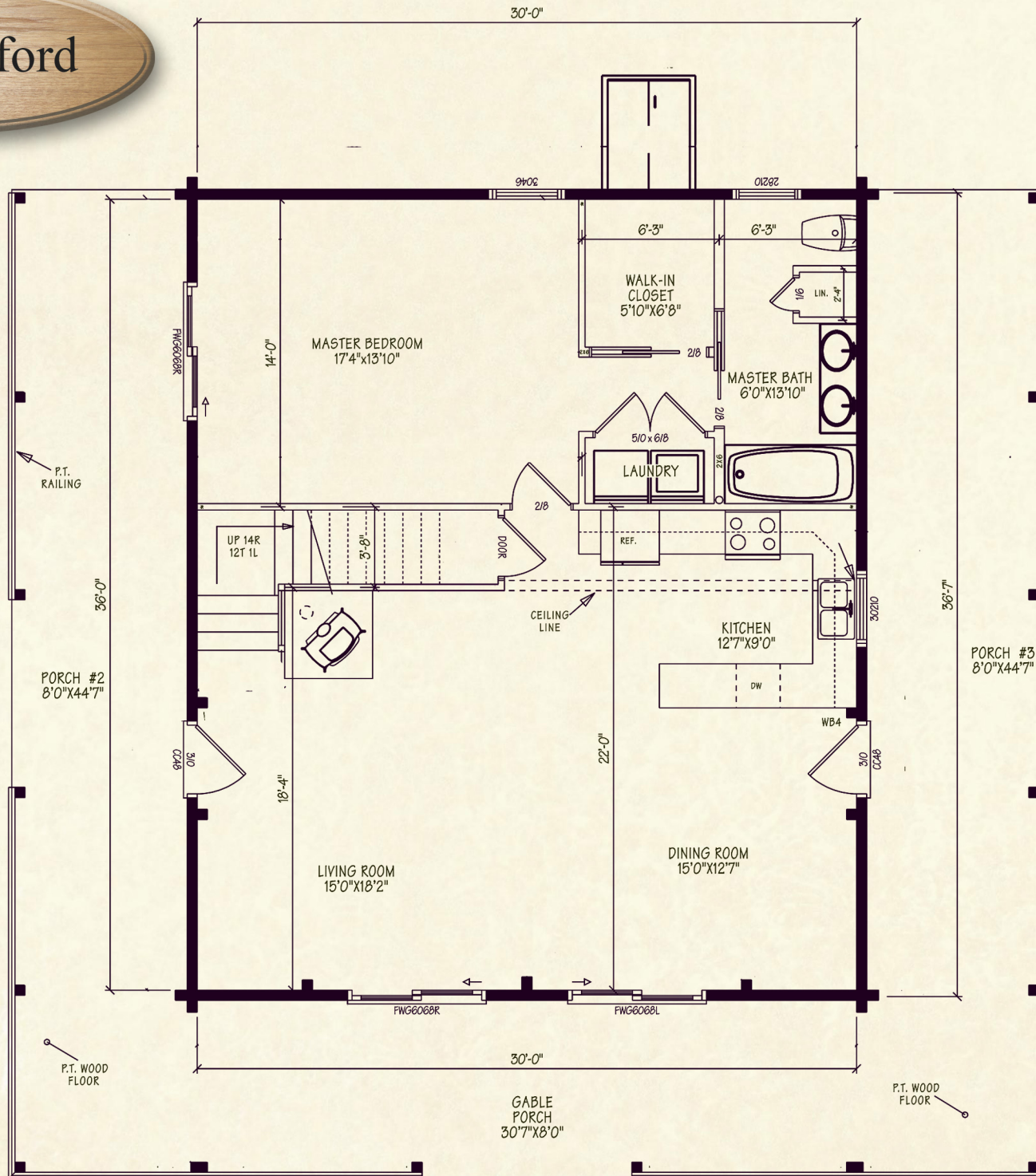
Add a door on the second floor bedroom that leads out to a breakfast balcony



Northeastern Log Homes

info@northeasternlog.com 800-624-2797 www.northeasternlog.com

The Ashford



The Ashford

