



The Rockwood



Premier Home Series

 24' x 32' Size

 768 Square Feet

 Two Bedrooms

 One Bath

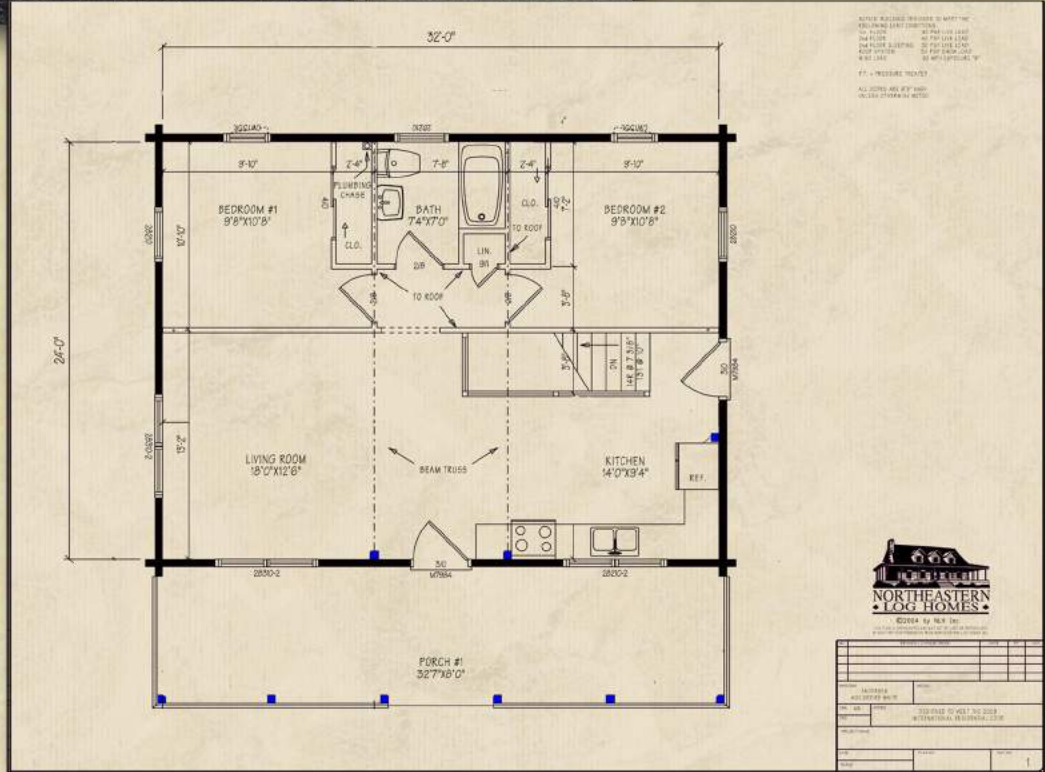
Optional Design Ideas:

For smaller homes, also consider the plans and designs in the Traditional Home Series

Consider a single window over the sink to allow for more cabinet space in the kitchen area.

Push the door in on either bedroom #1 or bedroom #2 to allow for room to create a stackable Washer/Dryer area in the hallway

Add a deck off the side, or rear of the plan. This can provide a terrific area for family gatherings, BBQ's or evening relaxation.



Northeastern Log Homes

info@northeasternlog.com 800-624-2797 www.northeasternlog.com

*Artist's rendering, photography & optional design ideas may vary from the standard model. Please always refer to the standard floorplan and consult the Premier Home Series Material List as to what is included. All plans, photography and images copyright NLH 2016

32'-0"

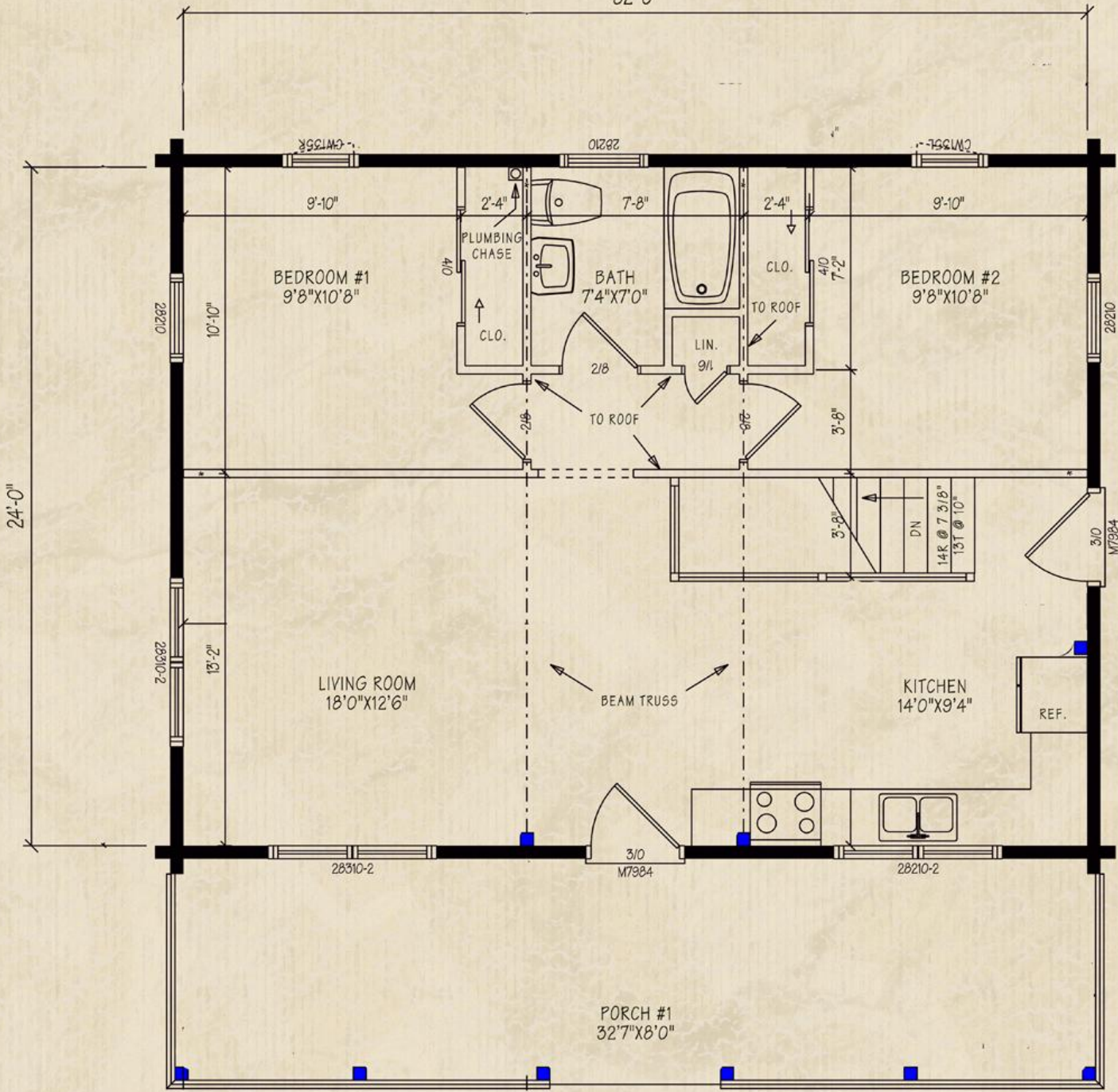
24'-0"

NOTICE: BUILDING DESIGNED TO MEET THE FOLLOWING LOAD CONDITIONS:

1st FLOOR	40 PSF LIVE LOAD
2nd FLOOR	40 PSF LIVE LOAD
2nd FLOOR SLEEPING	30 PSF LIVE LOAD
ROOF SYSTEM	50 PSF SNOW LOAD
WIND LOAD	90 MPH EXPOSURE 'B'

P.T. = PRESSURE TREATED

ALL DOORS ARE 6'8" HIGH UNLESS OTHERWISE NOTED.



NORTHEASTERN LOG HOMES

©2004 by NLH Inc

THIS PLAN IS COPYRIGHTED AND MAY NOT BE USED OR REPRODUCED WITHOUT WRITTEN PERMISSION FROM NORTHEASTERN LOG HOMES INC.

NO.	REVISION / CHANGE ORDER	DATE	BY	CHKD.

WINDOWS	ANDERSEN 400 SERIES WHITE	MODEL	
DRN. M.K.		DESIGNED TO MEET THE 2009 INTERNATIONAL RESIDENTIAL CODE	
COLL.			
PROJECT NAME			
DATE	PLAN NO.	SHEET NO.	
SCALE		1	