



The Retreat



Premier Home Series

24' x 28' Size

672 Square Feet

One Bedroom

One Bath

Optional Design Ideas:

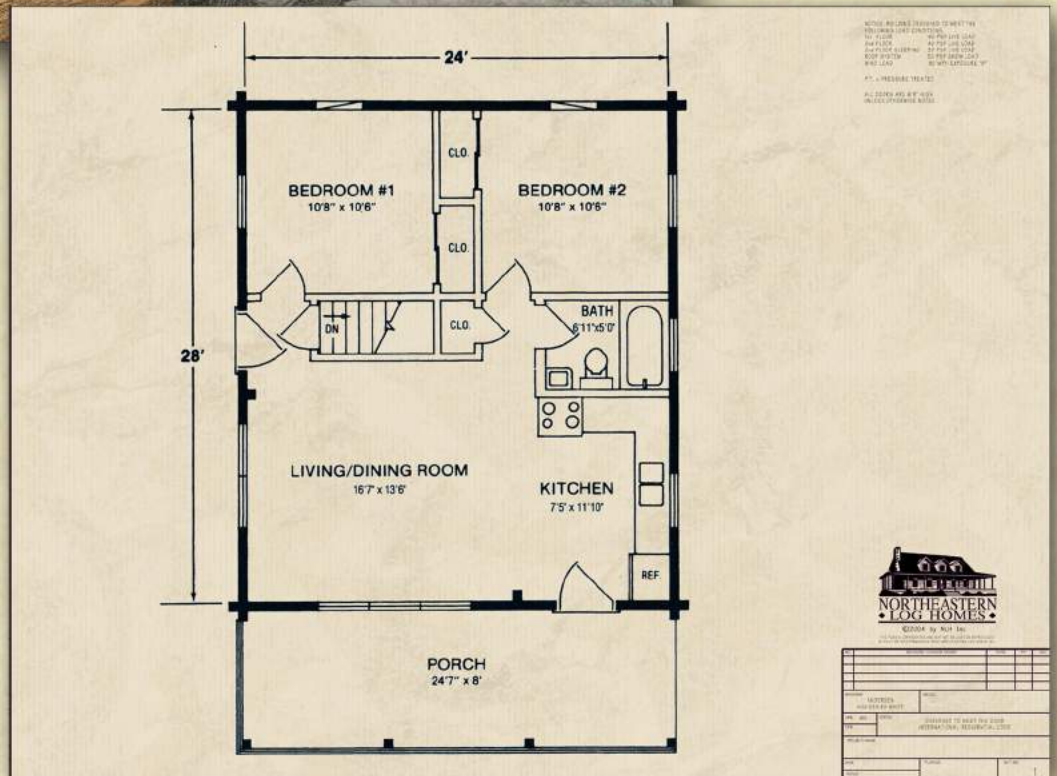
For smaller homes, also consider the plans and designs in the Traditional Home Series

Place a stackable Washer and Dryer across from the Bath to save on floorspace.

Change the casement windows on the north wall to become larger double-hung windows

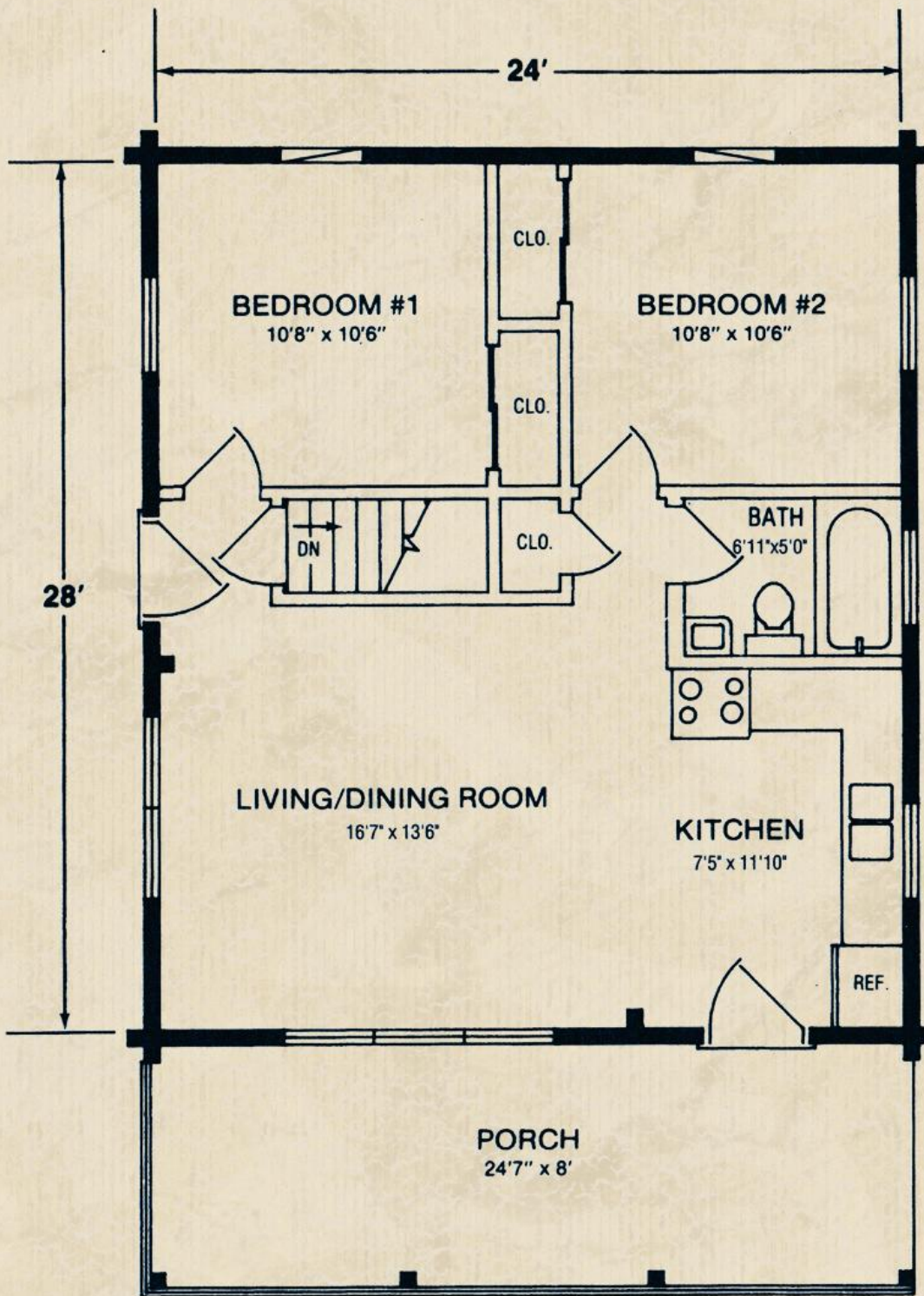
Consider an open truss on the porch gable to let more light in and give a more modern appearance

Add a deck off the side of the plan. This can provide a terrific area for family gatherings, BBQ's or evening relaxation.



Northeastern Log Homes

info@northeasternlog.com 800-624-2797 www.northeasternlog.com



NOTICE: BUILDING DESIGNED TO MEET THE FOLLOWING LOAD CONDITIONS.

1st FLOOR	40 PSF LIVE LOAD
2nd FLOOR	40 PSF LIVE LOAD
2nd FLOOR SLEEPING	30 PSF LIVE LOAD
ROOF SYSTEM	50 PSF SNOW LOAD
WIND LOAD	90 MPH EXPOSURE "B"

P.T. = PRESSURE TREATED

ALL DOORS ARE 6'8" HIGH UNLESS OTHERWISE NOTED.



©2004 by NLH Inc.

THIS PLAN IS COPYRIGHTED AND MAY NOT BE USED OR REPRODUCED WITHOUT WRITTEN PERMISSION FROM NORTHEASTERN LOG HOMES INC.

NO.	REVISION / CHANGE ORDER	DATE	BY	CHK.
WINDOWS		MODEL		
ANDERSEN				
400 SERIES WHITE				
DWN.	M.K.	CODES		DESIGNED TO MEET THE 2009 INTERNATIONAL RESIDENTIAL CODE
COD.				
PROJECT NAME				
DATE	PLAN NO.	SHT. NO.		
SCALE				1