



# The Kentuckian



3

*The Kentuckian*

3



THREE BEDROOM HOMES

Northeastern Log Homes

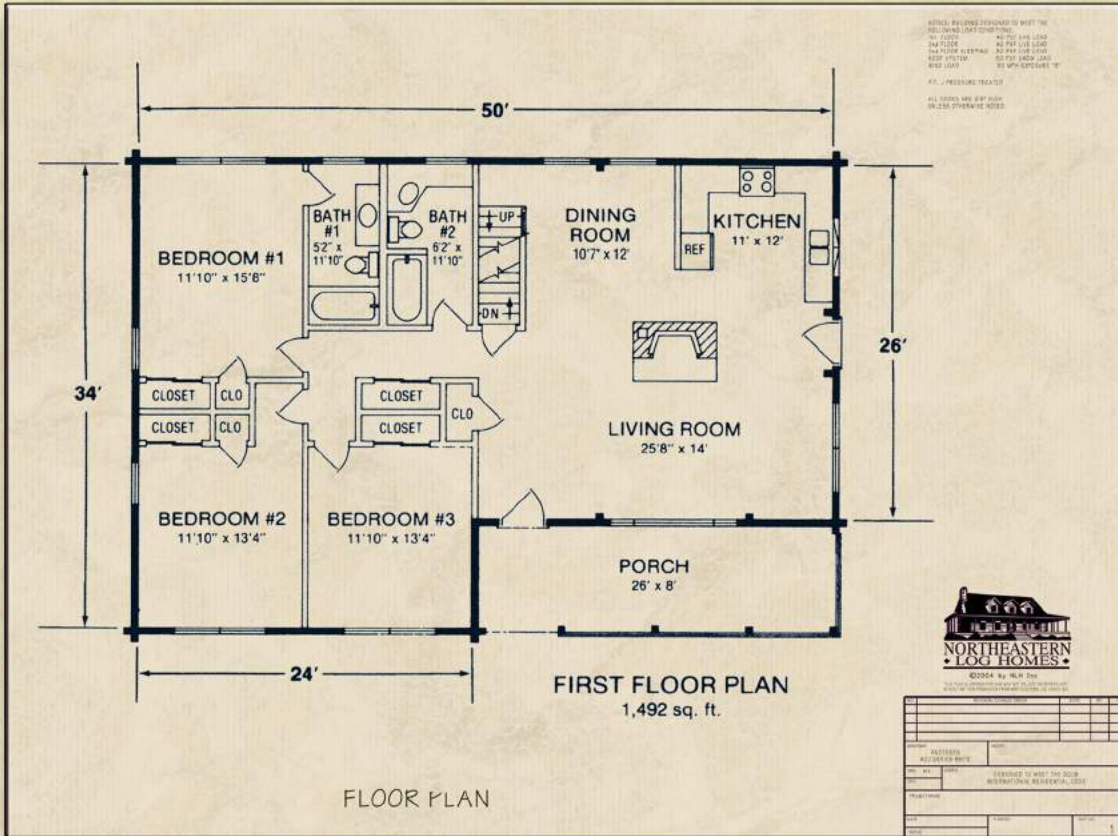
[info@northeasternlog.com](mailto:info@northeasternlog.com) 800-624-2797 [www.northeasternlog.com](http://www.northeasternlog.com)

\*Artist's rendering, photography and optional design ideas may vary from the standard model. Please always consult the standard floorplan and refer to the Premier Series material list as to what is included.





# The Kentuckian



Premier Home Series

34' x 50' Size

2,170 Square Feet

Three Bedrooms

Two Full Baths

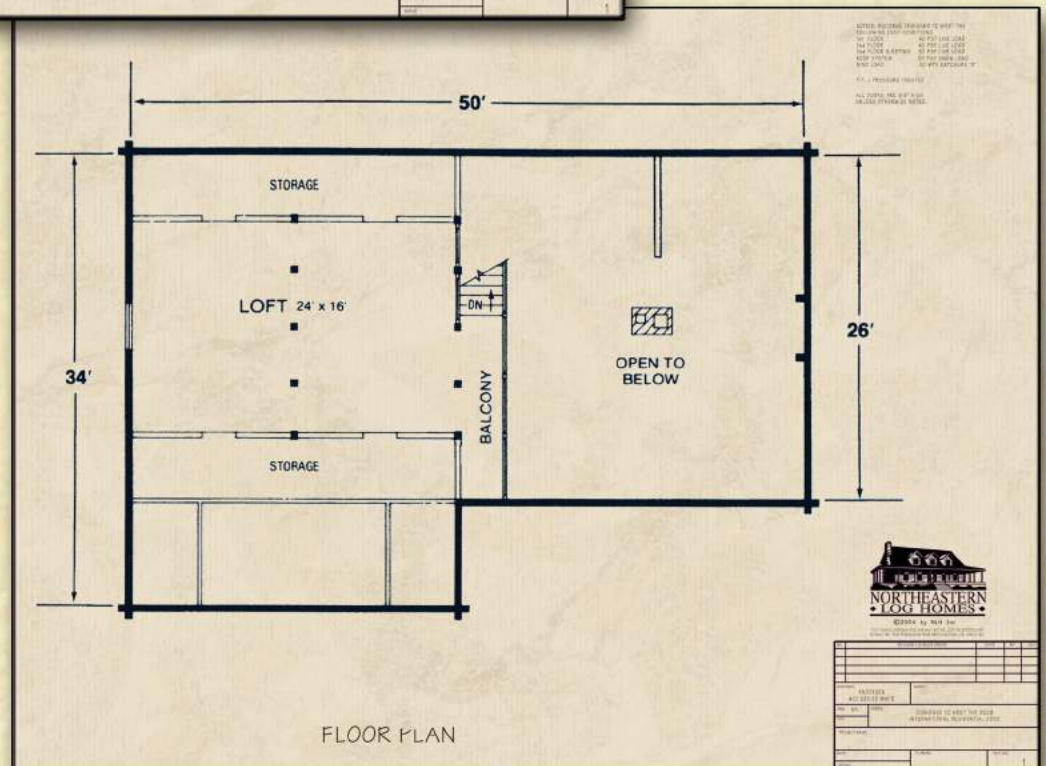
## Optional Design Ideas:

Remove the wall area between the kitchen/dining area and living room for much more open concept floorplan AND create a breakfast bar!

Move the fireplace to the exterior wall to open up that great room area even further

Easily add a washer/dryer to the first floor by utilizing part of the hallway closet across from the bath

Add a deck off the right hand side for a terrific gathering area for family & friends



Northeastern Log Homes

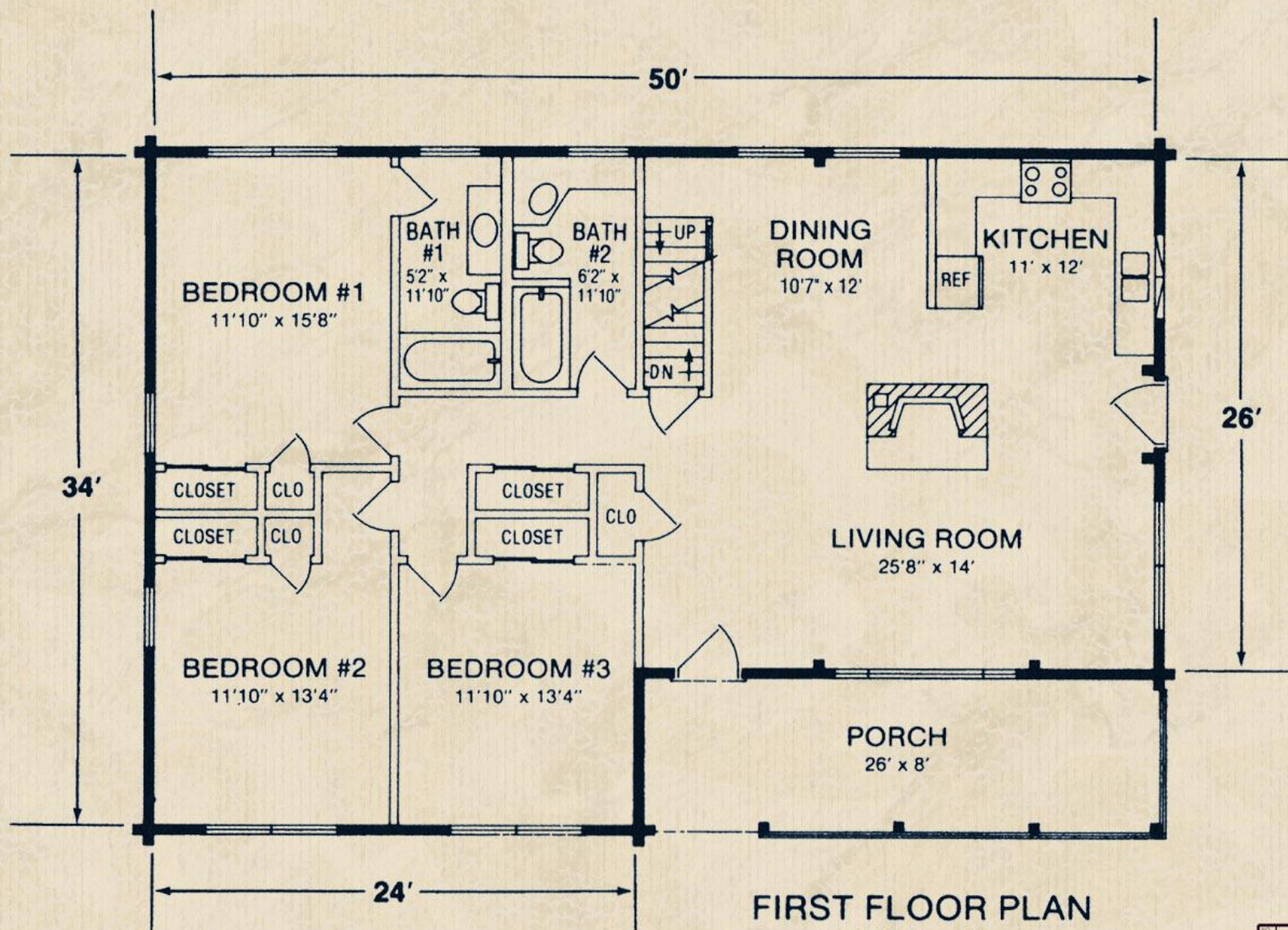
info@northeasternlog.com 800-624-2797 www.northeasternlog.com



NOTICE: BUILDING DESIGNED TO MEET THE FOLLOWING LOAD CONDITIONS:  
 1st FLOOR 40 PSF LIVE LOAD  
 2nd FLOOR 40 PSF LIVE LOAD  
 2nd FLOOR SLEEPING 30 PSF LIVE LOAD  
 ROOF SYSTEM 50 PSF SNOW LOAD  
 WIND LOAD 90 MPH EXPOSURE 'B'

P.T. = PRESSURE TREATED

ALL DOORS ARE 6'8" HIGH  
 UNLESS OTHERWISE NOTED.



**FIRST FLOOR PLAN**  
 1,492 sq. ft.

FLOOR PLAN



©2004 by NLH Inc.

THIS PLAN IS COPYRIGHTED AND MAY NOT BE USED OR REPRODUCED WITHOUT WRITTEN PERMISSION FROM NORTHEASTERN LOG HOMES INC.

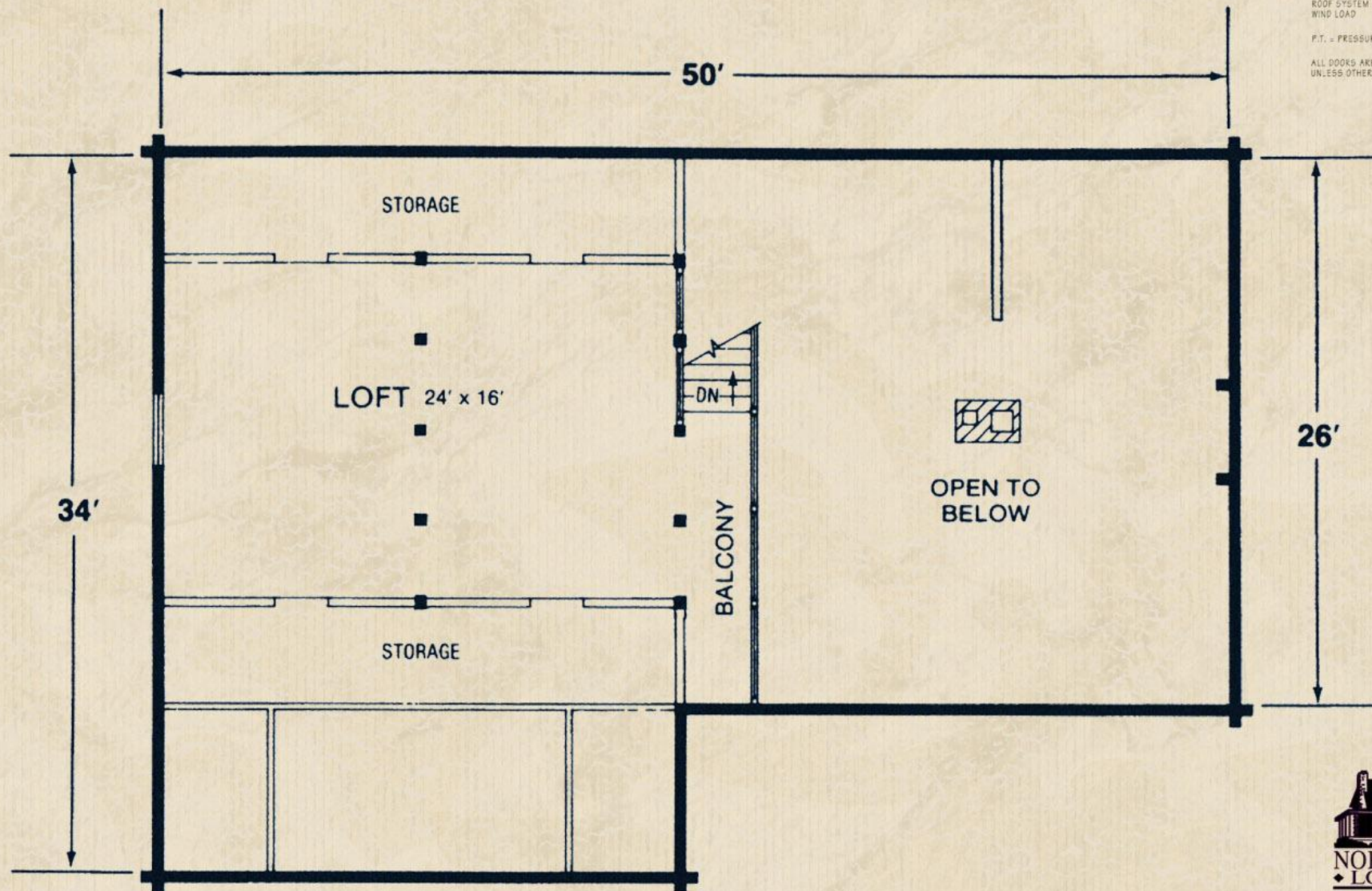
REVISION / CHANGE ORDER		DATE	BY	CHK
WINDOWS: ANDERSEN 400-SERIES WHITE		MODELS:		
PRN. M/L	CODES	DESIGNED TO MEET THE 2009 INTERNATIONAL RESIDENTIAL CODE		
LOAD				
PROJECT NAME:				
DATE:	PLAN NO.	SHT. NO.		1
SCALE:				



NOTICE: BUILDING DESIGNED TO MEET THE FOLLOWING LOAD CONDITIONS:  
 1st FLOOR 40 PSF LIVE LOAD  
 2nd FLOOR 40 PSF LIVE LOAD  
 2nd FLOOR SLEEPING 30 PSF LIVE LOAD  
 ROOF SYSTEM 50 PSF SNOW LOAD  
 WIND LOAD 80 MPH EXPOSURE 'B'

P.T. = PRESSURE TREATED

ALL DOORS ARE 6'8" HIGH UNLESS OTHERWISE NOTED.



FLOOR PLAN



©2004 by NLH Inc.

THIS PLAN IS COPYRIGHTED AND MAY NOT BE USED OR REPRODUCED WITHOUT WRITTEN PERMISSION FROM NORTHEASTERN LOG HOMES INC.

NO.		REVISION / CHANGE ORDER		DATE	BY	CHK
WINDOWS		MODEL				
ANDERSEN 400-SERIES WHITE						
PRN.	MA	DESIGNED TO MEET THE 2009 INTERNATIONAL RESIDENTIAL CODE				
LOAD						
PROJECT NAME						
DATE		PLAN NO.		SHEET NO.		
SCALE				1		