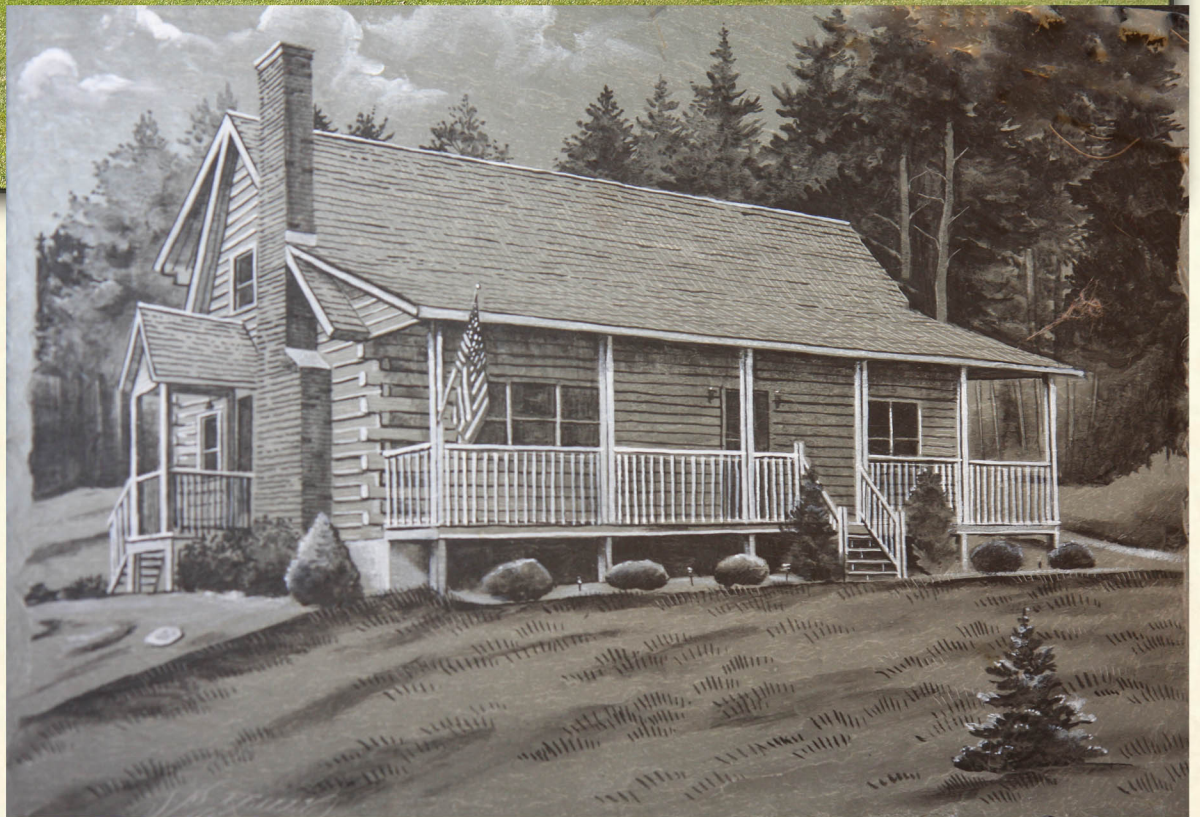




# The Greenville



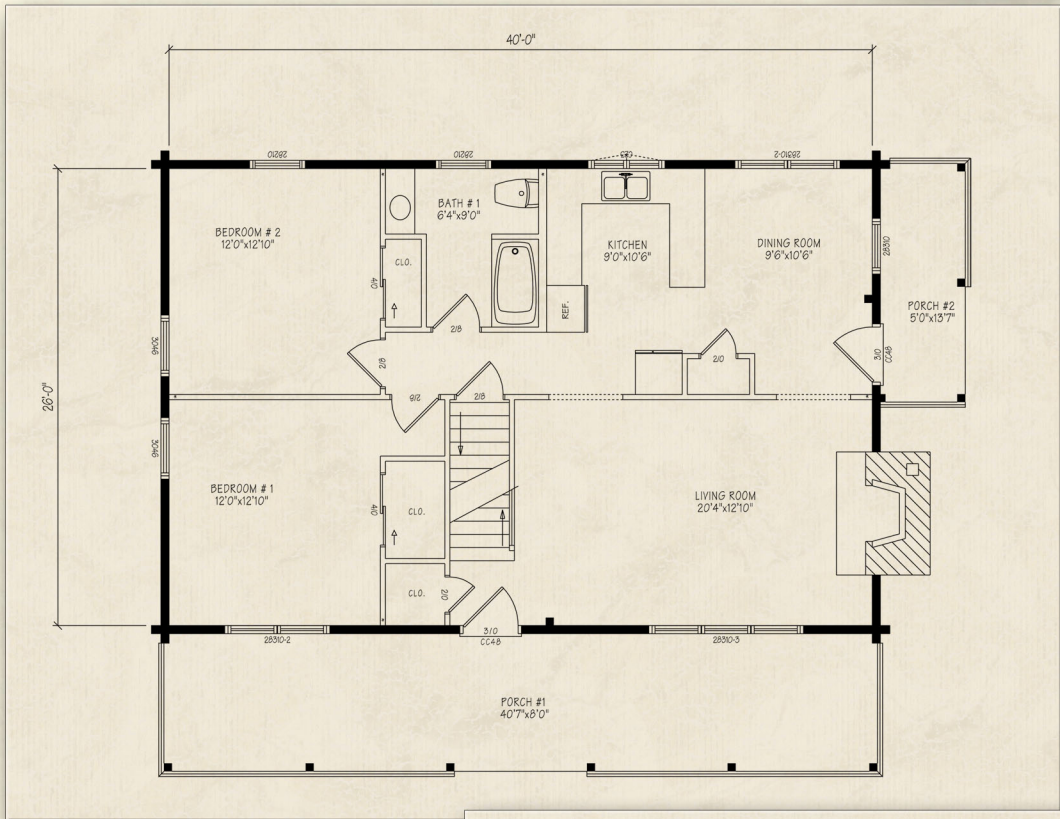
Northeastern Log Homes

[info@northeasternlog.com](mailto:info@northeasternlog.com) 800-624-2797 [www.northeasternlog.com](http://www.northeasternlog.com)

\*Artist's rendering, photography and optional design ideas may vary from the standard model. Please always consult the standard floorplan and refer to the Premier Series material list as to what is included.



# The Greenville

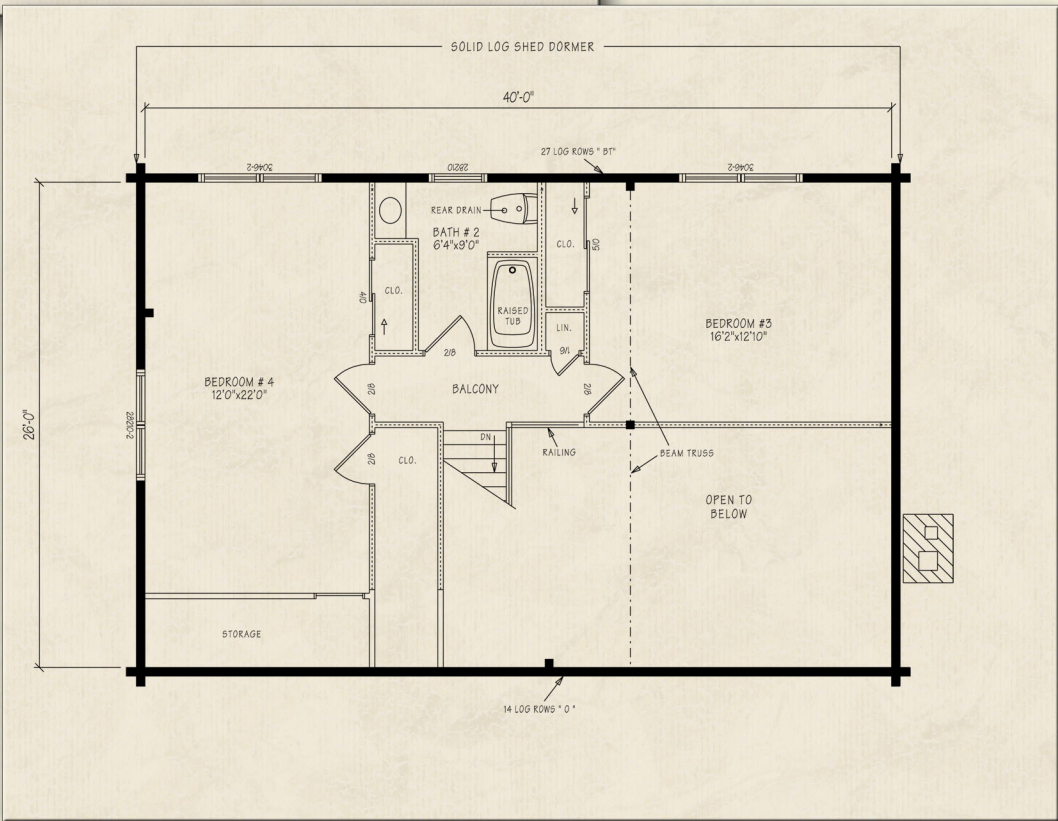


Premier Home Series

- 
- 26' x 40' Size
- 
- 1,881 Square Feet
- 
- Four Bedrooms
- 
- Two Full Baths
- 
- Pricing information available for download on our website

Optional Design Ideas:

- Make a first floor Master Suite by removing the partition between Bedroom #1 and Bedroom #2
- 
- Remove the wall area between the kitchen/dining area and living room for much more open concept floorplan
- 
- Move the fireplace next to the stairs and put (2) windows or frenchwood door to a deck on that right side
- 
- The Bedroom #3 area can easily be converted into a wonderful loft space--potentially giving a dedicated second floor master suite with private loft

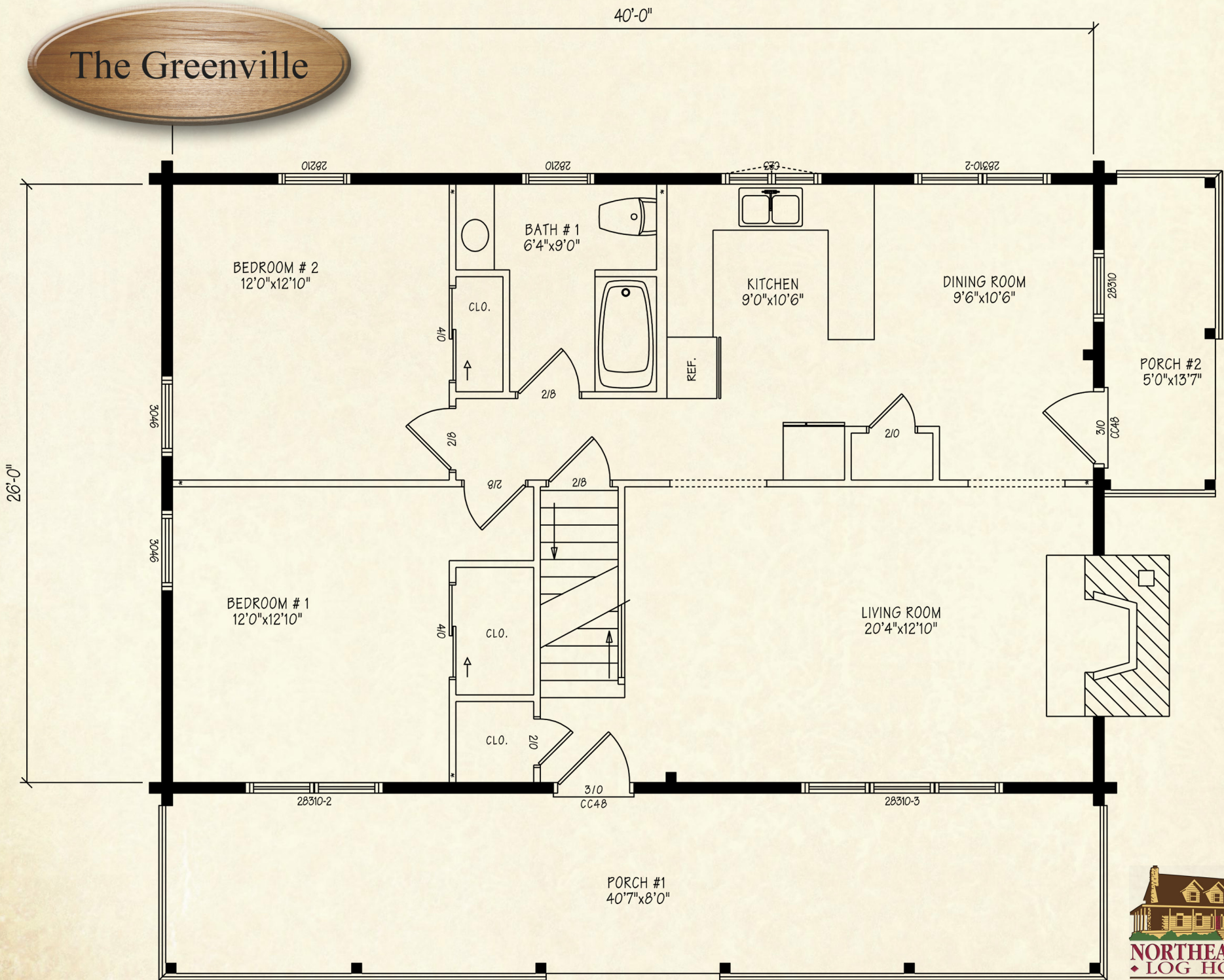


Northeastern Log Homes

info@northeasternlog.com 800-624-2797 www.northeasternlog.com

\*Artist's rendering, photography & optional design ideas may vary from the standard model. Please always refer to the standard floorplan and consult the Premier Home Series Material List as to what is included. All plans, photography and images copyright NLH 2016

# The Greenville



# The Greenville

SOLID LOG SHED DORMER

40'-0"

26'-0"

