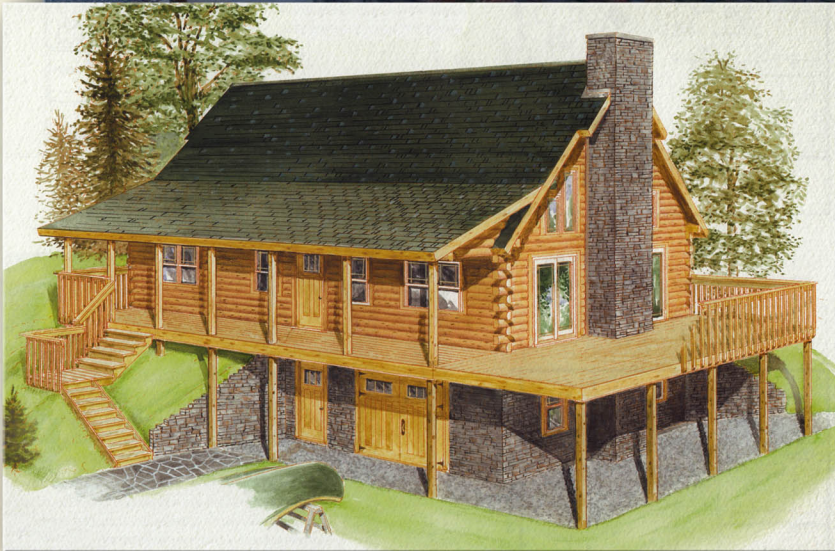




The Carbondale



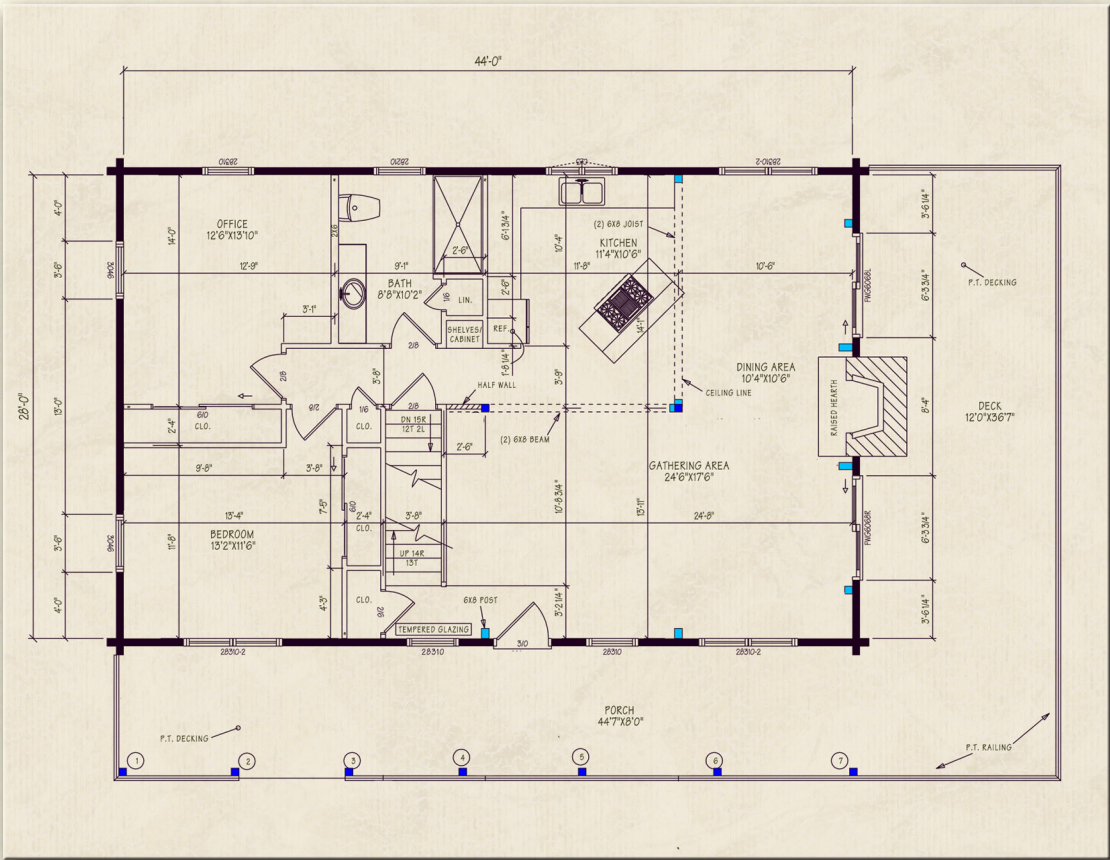
Northeastern Log Homes

info@northeasternlog.com 800-624-2797 www.northeasternlog.com

*Artist's rendering, photography and optional design ideas may vary from the standard model. Please always consult the standard floorplan and refer to the Premier Series material list as to what is included.



The Carbondale



Premier Home Series

28' x 44' Size

2,035 Square Feet

Two Bedrooms

Two Baths

Pricing information available for download from our website

Optional Design Ideas:

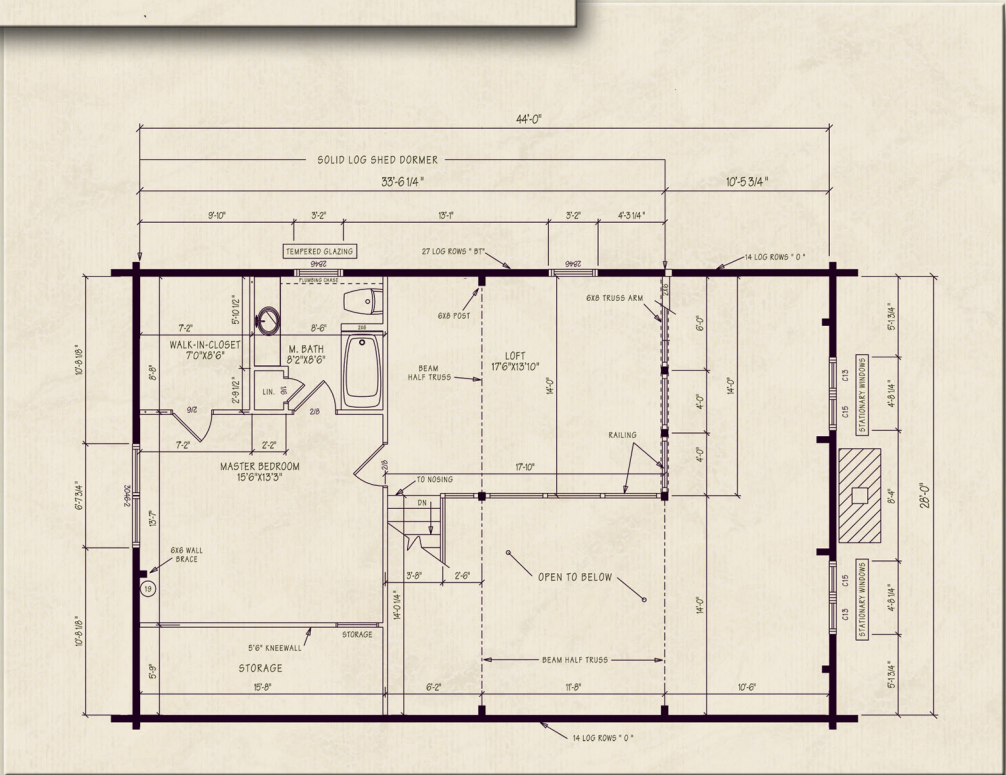
Add a double sink to the downstairs bath as well as the master bath

The 'office' can easily be converted into a third bedroom (or utilize walk-out basement area--basement plan shown below)

Bunk beds in the first floor bedroom allow space for (4) kids in that first floor bedroom

With a corner shower in the first floor bath, you can put in a partition wall and door across the bath to give a "hotel style" privacy area. One guest can be in the private shower/lav area, and one can be at the large sink

Fireplace can move to nook up against the chimney. Now there are tremendous possibilities to create even more of a feature window wall



Northeastern Log Homes

info@northeasternlog.com 800-624-2797 www.northeasternlog.com

*Artist's rendering, photography & optional design ideas may vary from the standard model. Please always refer to the standard floorplan and consult the Premier Home Series Material List as to what is included. All plans, photography and images copyright NLH 2016



The Carbondale



Northeastern Log Homes

info@northeasternlog.com 800-624-2797 www.northeasternlog.com

*Artist's rendering, photography and optional design ideas may vary from the standard model. Please always consult the standard floorplan and refer to the Premier Series material list as to what is included.

The Carbondale

44'-0"

