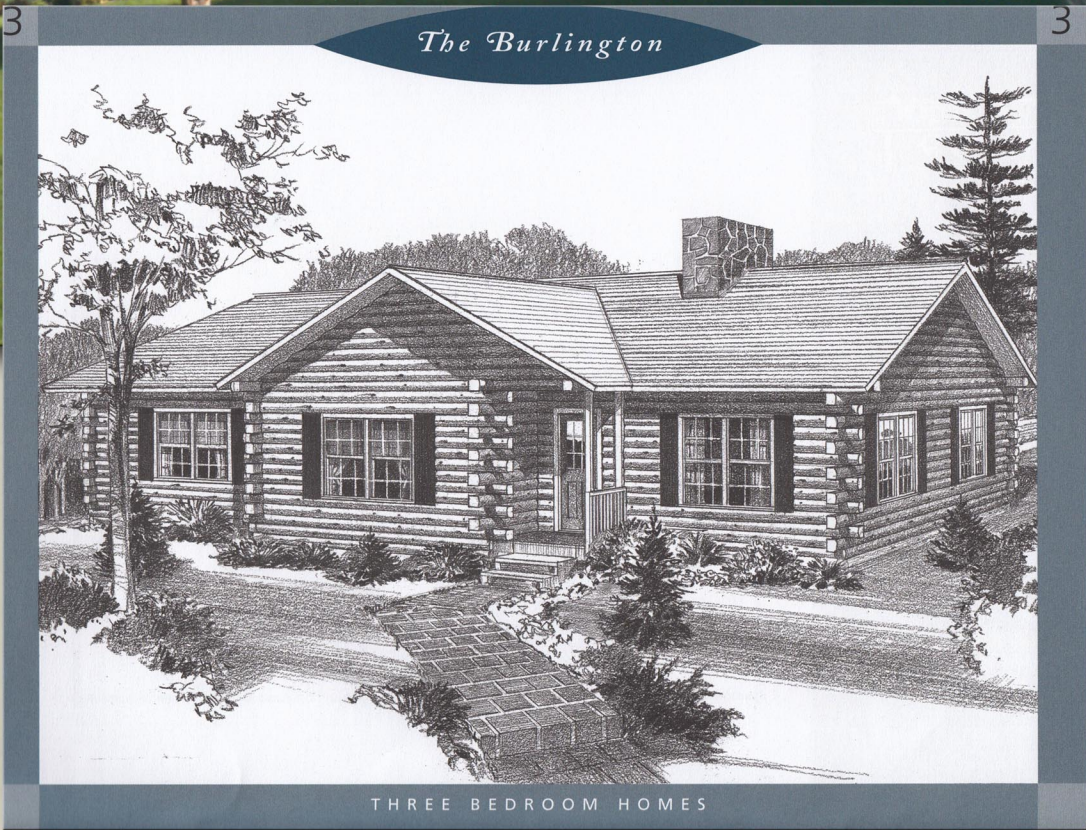
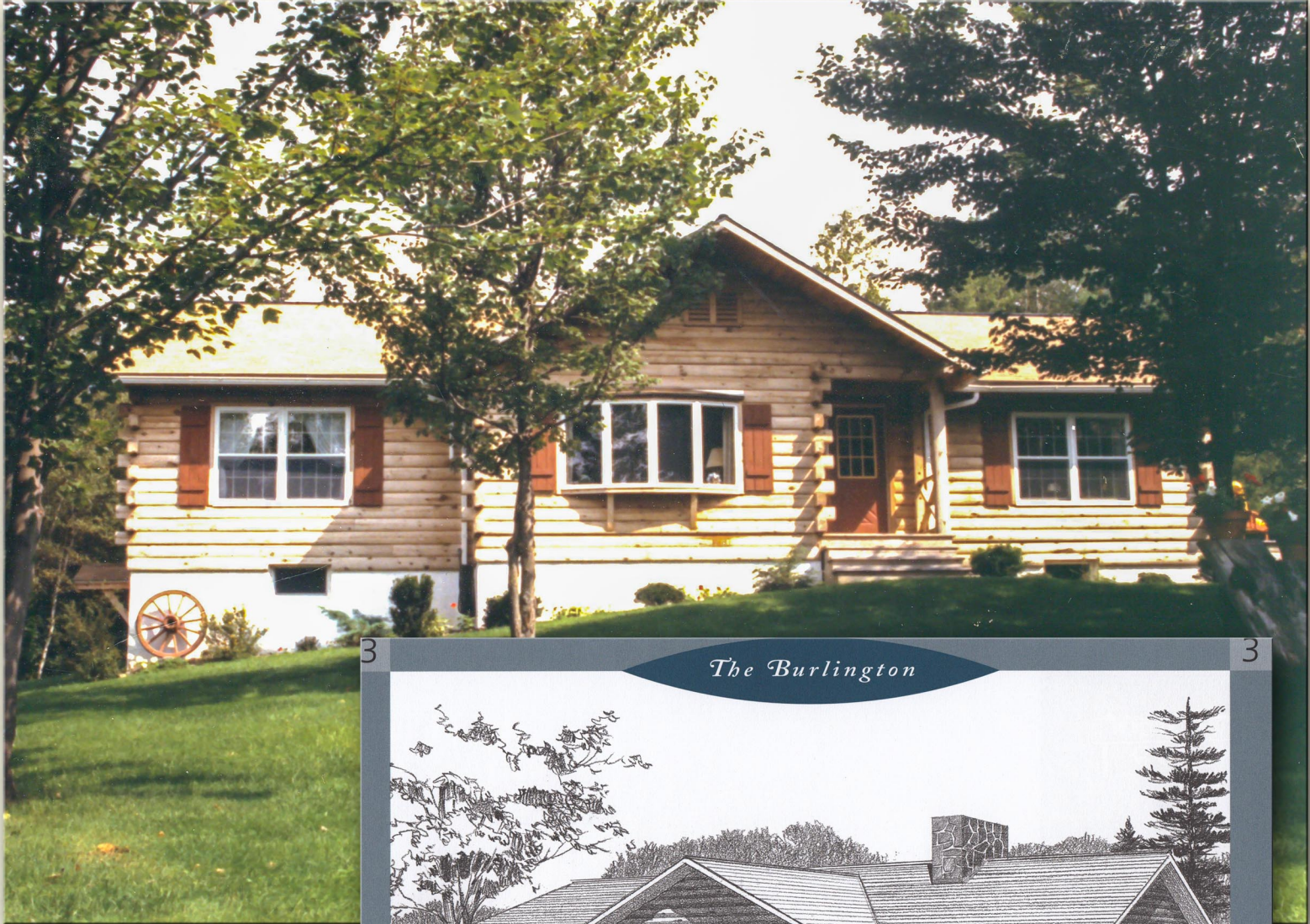




# The Burlington



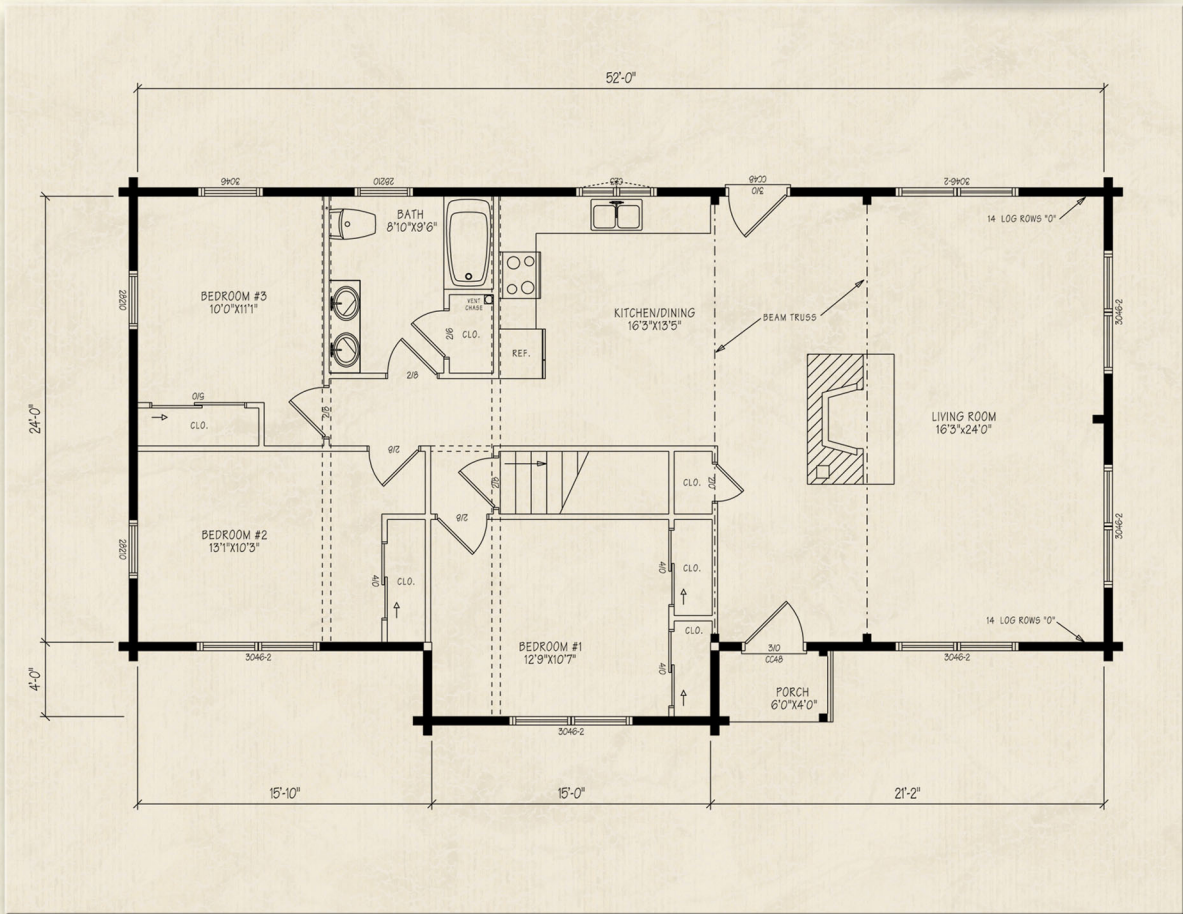
Northeastern Log Homes

[info@northeasternlog.com](mailto:info@northeasternlog.com) 800-624-2797 [www.northeasternlog.com](http://www.northeasternlog.com)

\*Artist's rendering, photography and optional design ideas may vary from the standard model. Please always consult the standard floorplan and refer to the Premier Series material list as to what is included.



# The Burlington



*Premier Home Series*

-----  
*28' x 52' Size*

-----  
*1,360 Square Feet*

-----  
*Three Bedrooms*

-----  
*One Bath*

-----  
*Pricing information  
 available for download  
 from our website*

### *Optional Design Ideas*

*Move the Chimney to an outer wall area to create a focal point and open up the main living room*

-----  
*Consider a small island in the kitchen area to create additional counter space*

-----  
*The kitchen rear door can be slid to the right to allow for more countertop area*

-----  
*Also--see the ranch designs in the Traditional Home Series for further floorplans in this size*

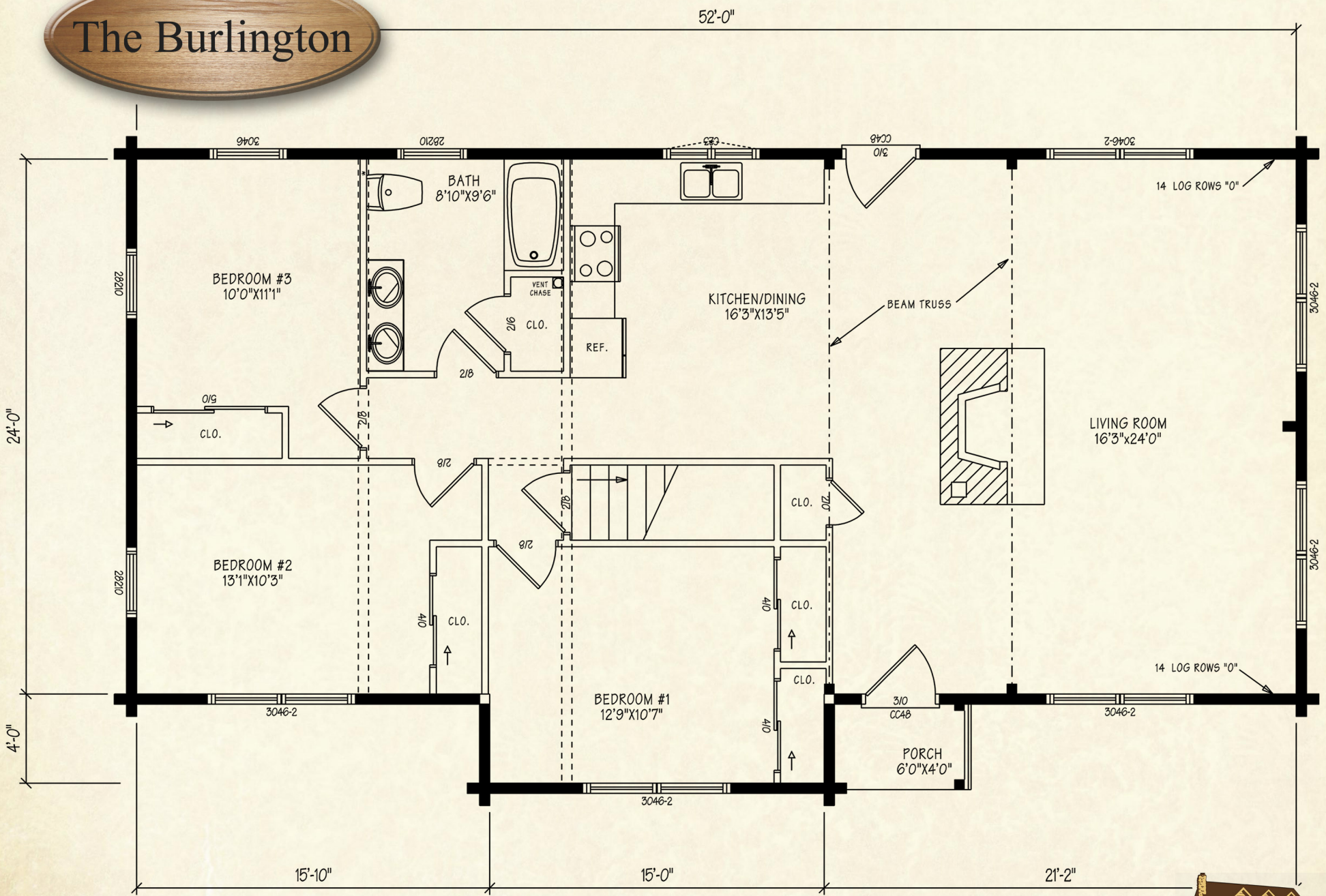


*Northeastern Log Homes*

*info@northeasternlog.com 800-624-2797 www.northeasternlog.com*

\*Artist's rendering, photography and optional design ideas may vary from the standard model. Please always consult the standard floorplan and refer to the Premier Home Series material list as to what is included. All images and plans copyright Northeastern Log Homes

# The Burlington



Note: As shown above, our standard Burlington design features (2) 3046 windows in the Bedroom #1 wall.

