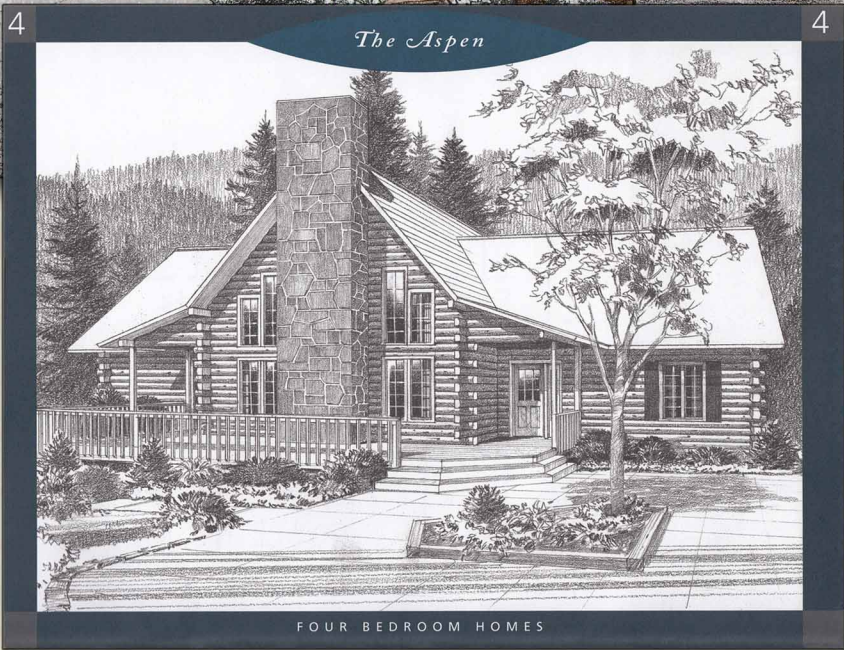
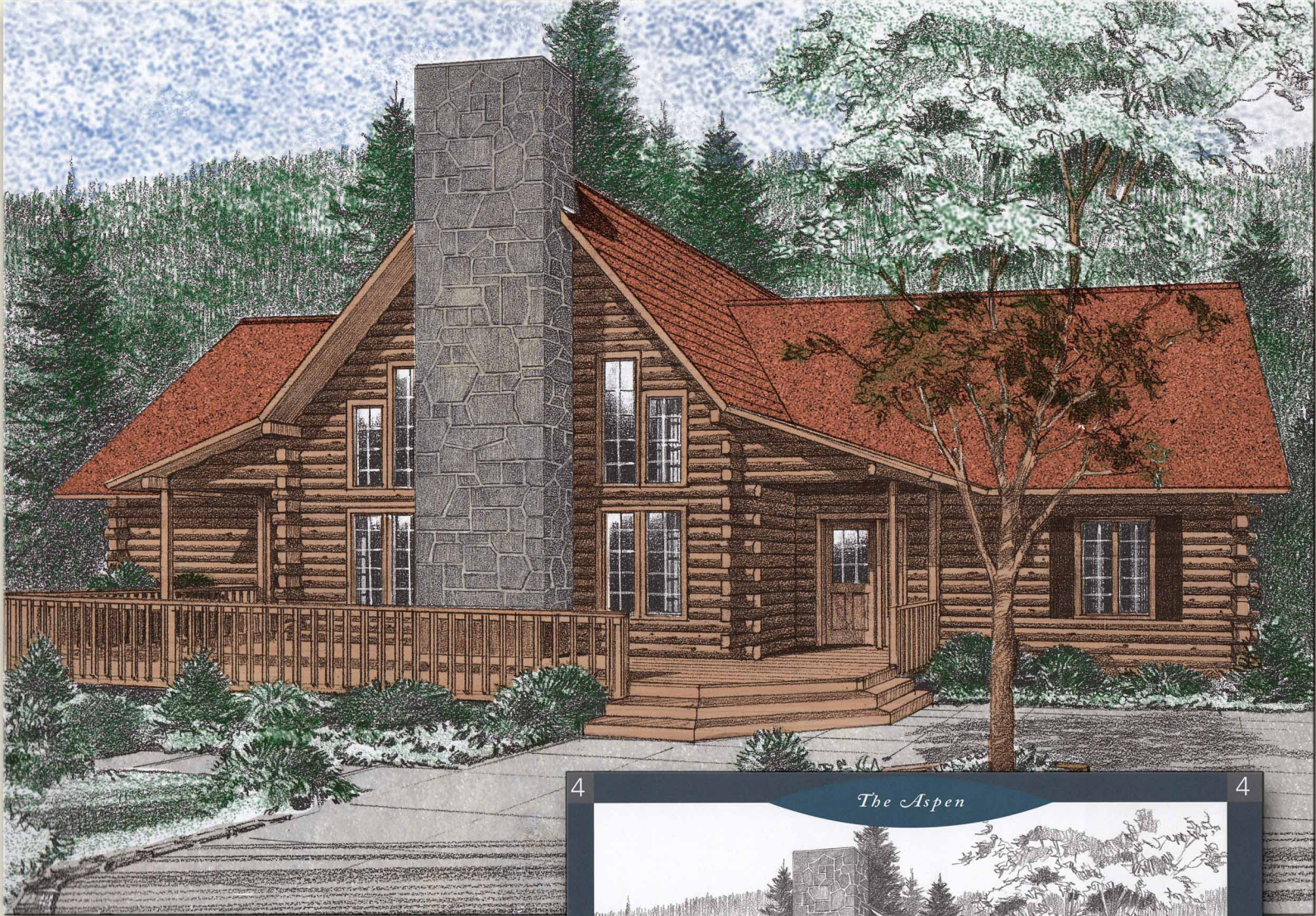




# The Aspen



Northeastern Log Homes

[info@northeasternlog.com](mailto:info@northeasternlog.com) 800-624-2797 [www.northeasternlog.com](http://www.northeasternlog.com)

\*Artist's rendering, photography and optional design ideas may vary from the standard model. Please always consult the standard floorplan and refer to the Premier Series material list as to what is included.



# The Aspen

## Premier Home Series

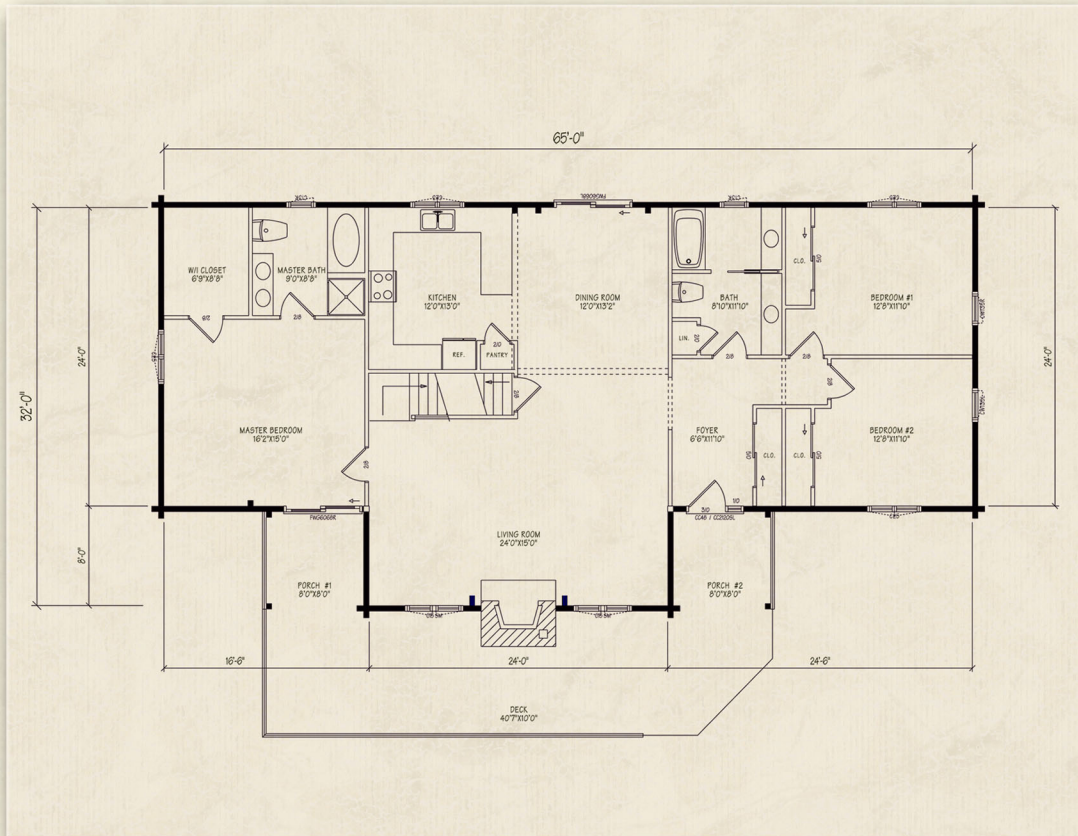
32' x 65' Size

2,844 Square Feet

Four Bedrooms

2 and a 1/2 Baths

Material Package Price  
downloadable from our  
website



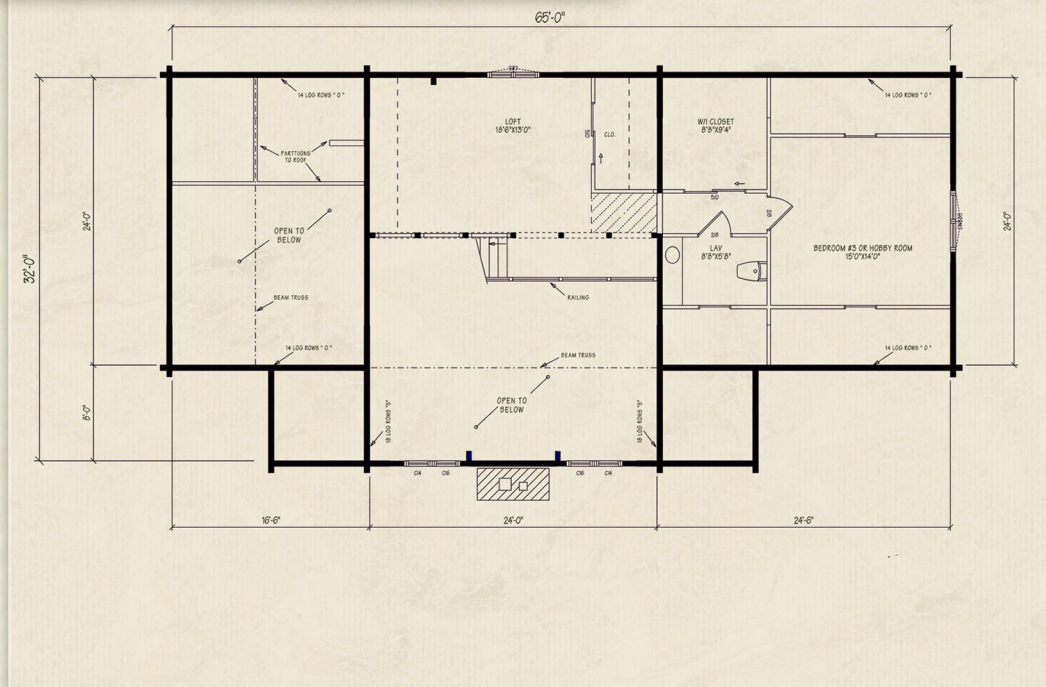
### Optional Design Ideas:

In the first floor bath, think about switching the (far) sink and toilet locations. With the shower and toilet now both located in a private area, it creates a fantastic “hotel-style” bath for family and guests

Add additional floor space over the master bedroom--currently just shown as wide open to the ceiling

Design in an “open” set of stairs to allow increased visibility from the kitchen into the main living room area

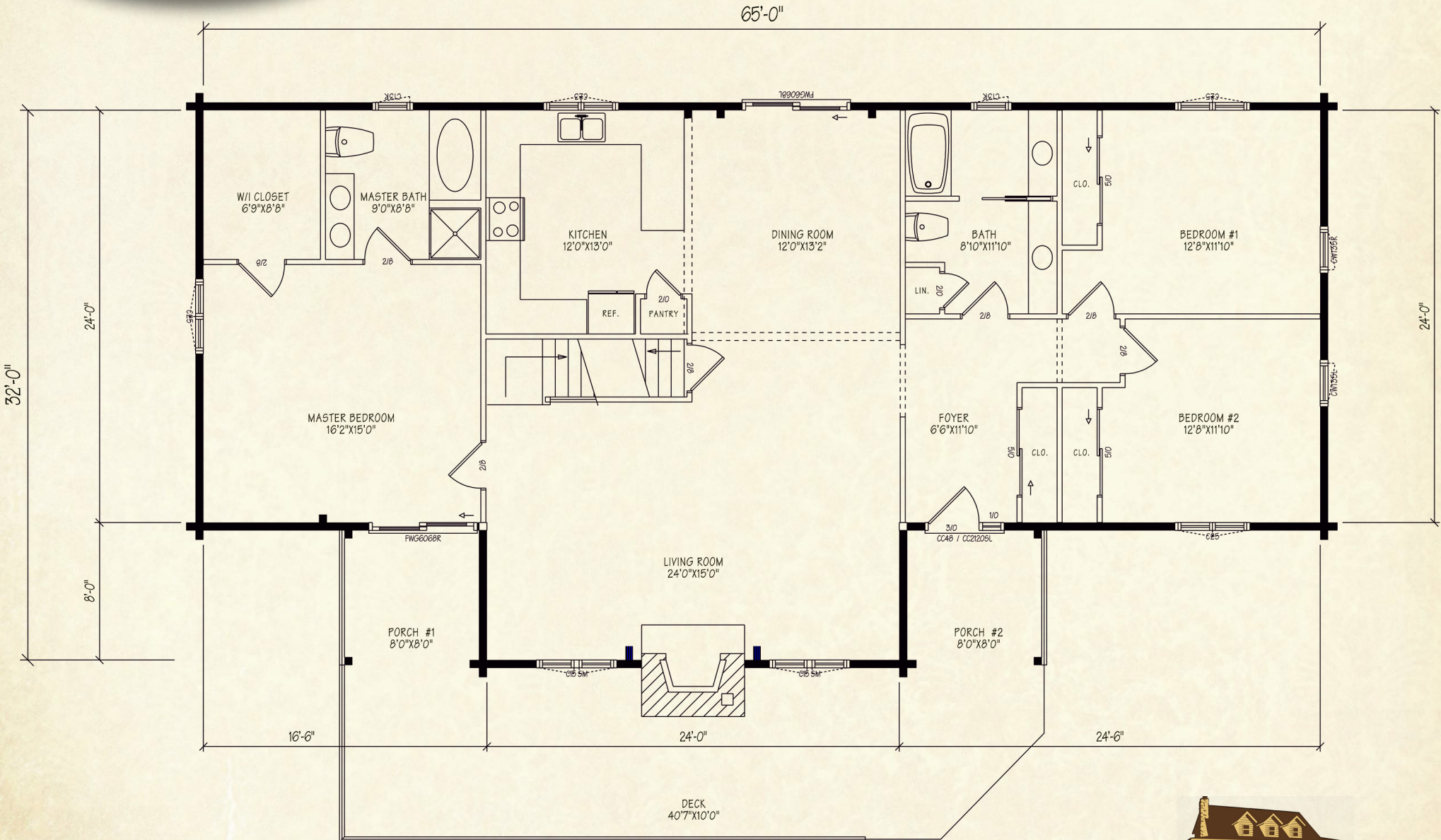
Add a single or double window to either side of the great room extension for taking advantage of your view



Northeastern Log Homes

info@northeasternlog.com 800-624-2797 www.northeasternlog.com

# The Aspen



# The Aspen

