



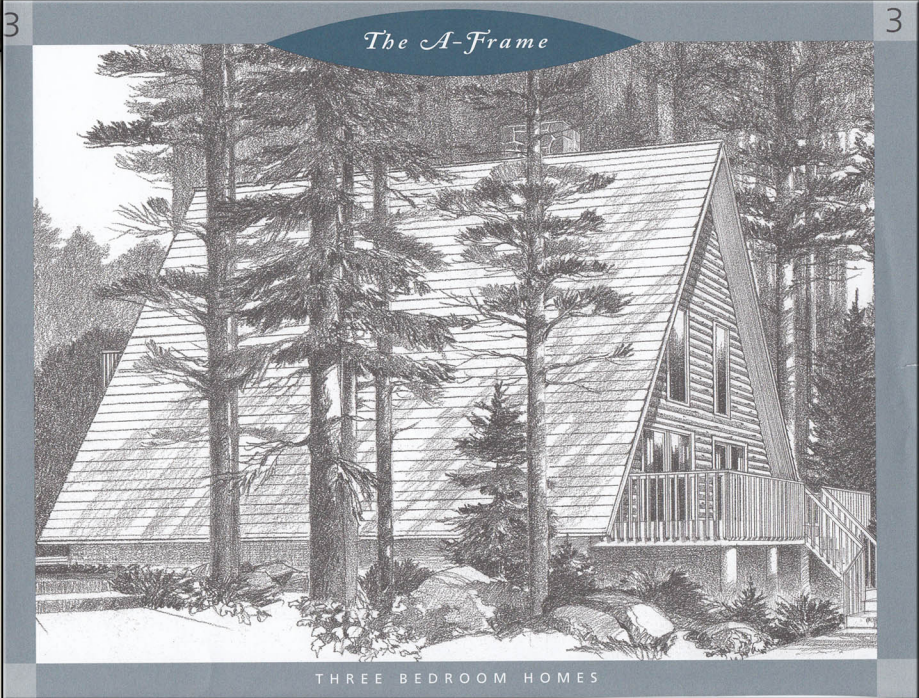
# The A-Frame



3

*The A-Frame*

3



THREE BEDROOM HOMES

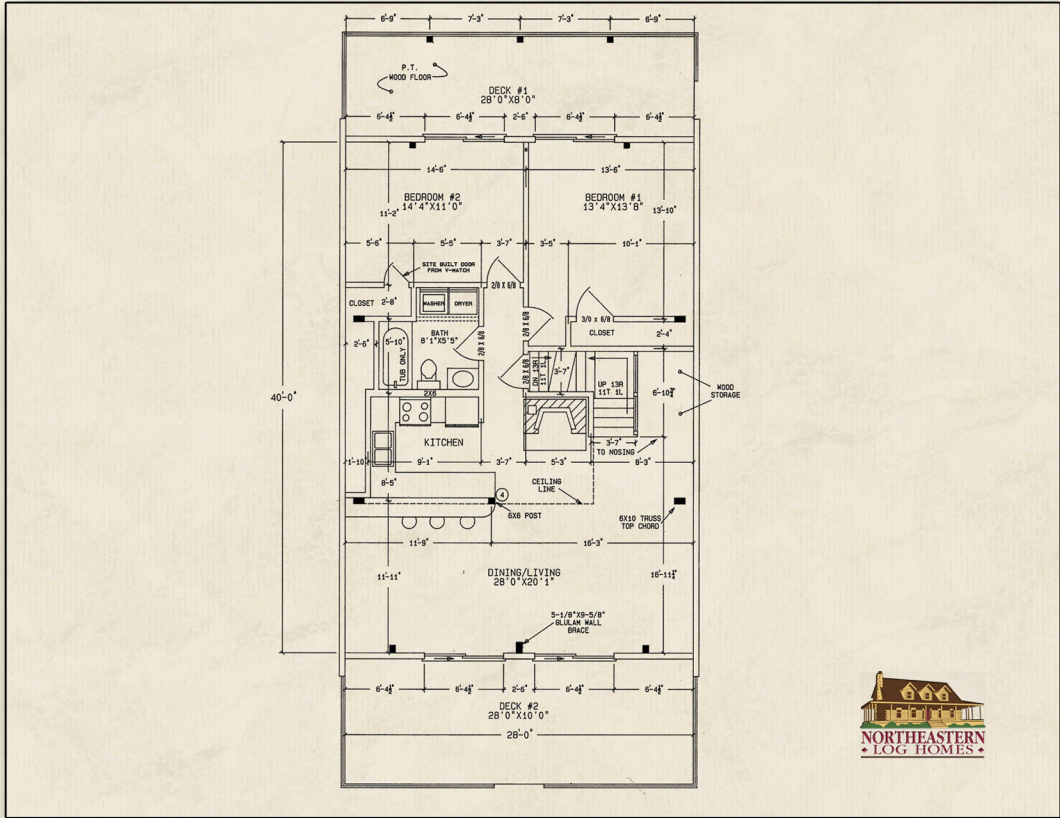
Northeastern Log Homes

[info@northeasternlog.com](mailto:info@northeasternlog.com) 800-624-2797 [www.northeasternlog.com](http://www.northeasternlog.com)

\*Artist's rendering, photography and optional design ideas may vary from the standard model. Please always consult the standard floorplan and refer to the Premier Series material list as to what is included.



# The A-Frame



Premier Home Series

-----  
28' x 40' Size

-----  
1,720 Square Feet

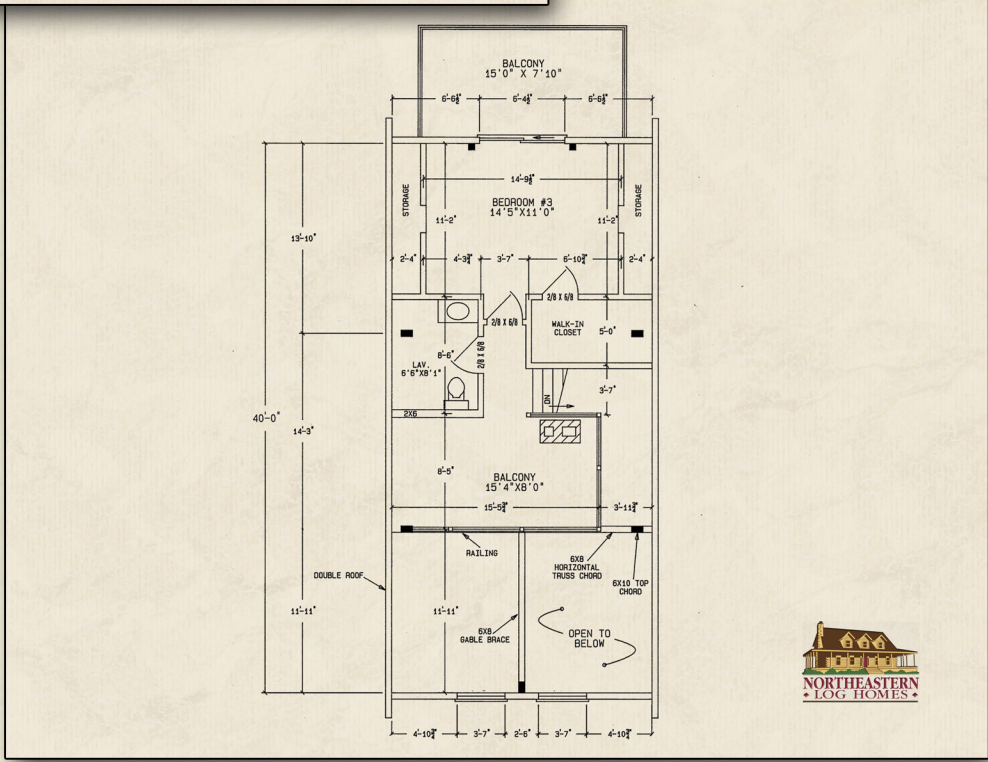
-----  
Three Bedrooms

-----  
1 and a 1/2 Baths

-----  
Material package price  
available for download on  
our website

Optional Design Ideas:

- Remove the partition wall between the two first floor bedrooms to create a master bedroom suite on the first floor
- 
- Add a pair of roof windows to the sides of the great room to allow for more natural light to travel into that space
- 
- That same idea of the roof windows can be utilized for the upstairs bedroom as well. Now, there is much more light that can come through what before would have been only a roof
- 
- Consider built-in drawers for storage in those east and west wall areas on the second floor. By utilizing drawers with full extension glides, you can create a terrific amount of storage, eliminating the need for bureaus or other furniture

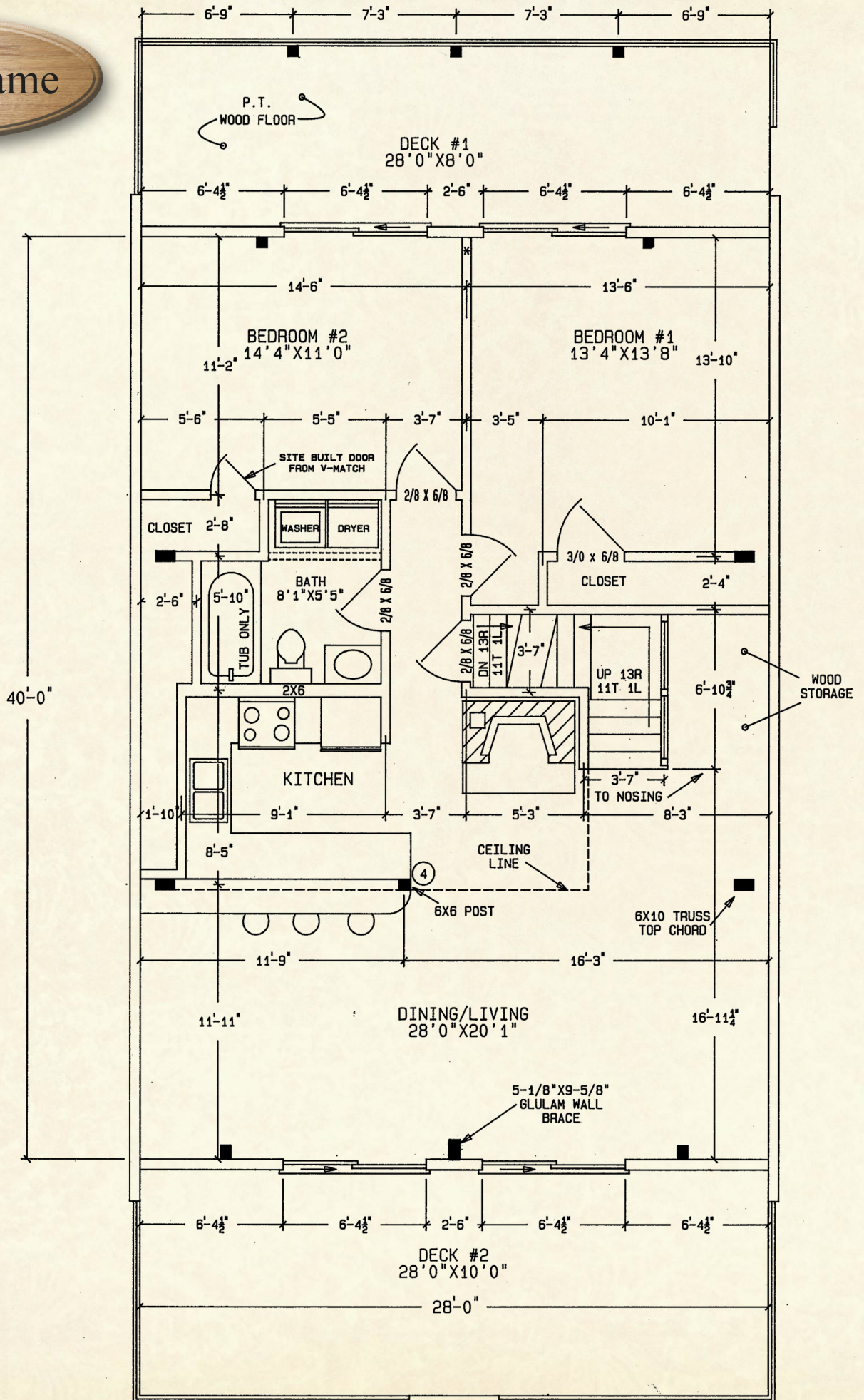


Northeastern Log Homes

info@northeasternlog.com 800-624-2797 www.northeasternlog.com

\*Artist's rendering, photography & optional design ideas may vary from the standard model. Please always refer to the standard floorplan and consult the Premier Home Series Material List as to what is included. All plans, photography and images copyright NLH 2016

# The A-Frame



# The A-Frame

