



The Weston



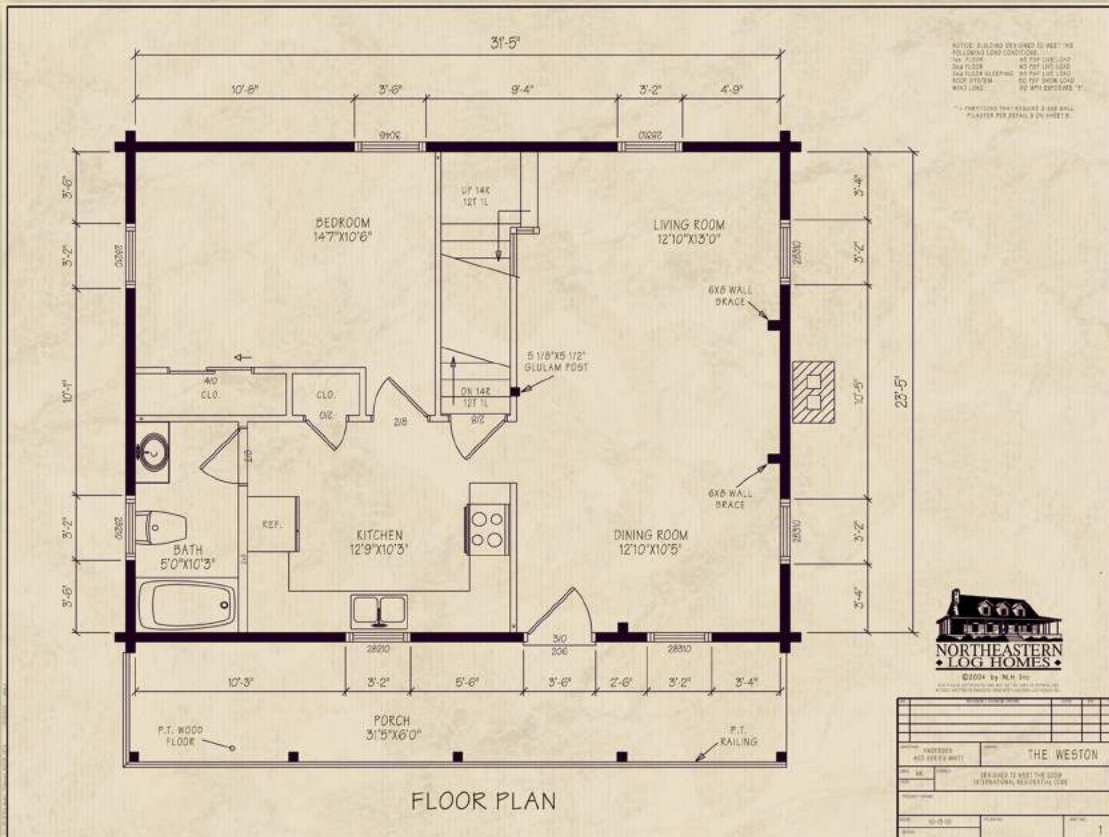
Traditional Home Series--The Weston

Northeastern Log Homes
info@northeasternlog.com 800-624-2797 www.northeasternlog.com

*Artist's rendering, photography and optional design ideas may vary from the standard model. Please always consult the standard floorplan and refer to the Traditional Home Series material list as to what is included.



The Weston



Traditional Home Series

24' x 32' Size

1,125 Square Feet

One Bedroom (plus loft)

One Full Bath

The Weston has a full cathedral ceiling on the entire second floor and open to below area via rafters & ridge beam with knotty pine v-match included below. The 1st to 2nd floor area is done via regular framing with knotty pine v-match optional for the 1st floor ceiling. See material list for full details.

Optional Design Ideas

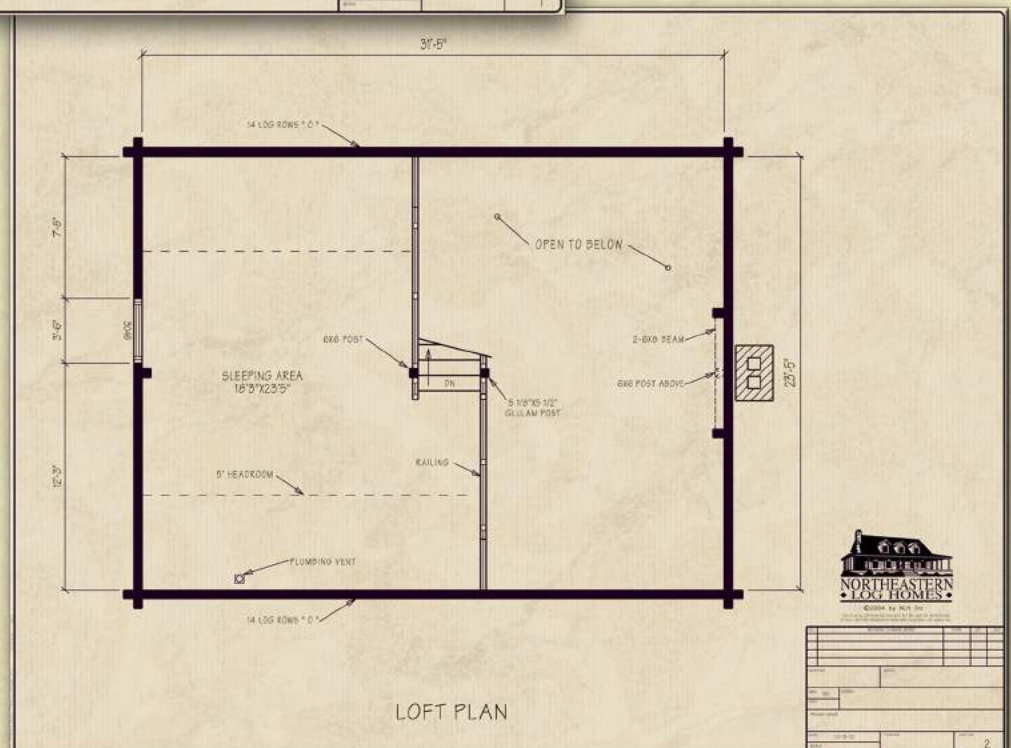
Extend the dormer across the second floor and add windows to really enlarge the second floor area

Change the window in the rear or side of the living room to a frenchwood gliding door

Add a deck off the rear or side of the living room for gatherings or easy access to a BBQ grill

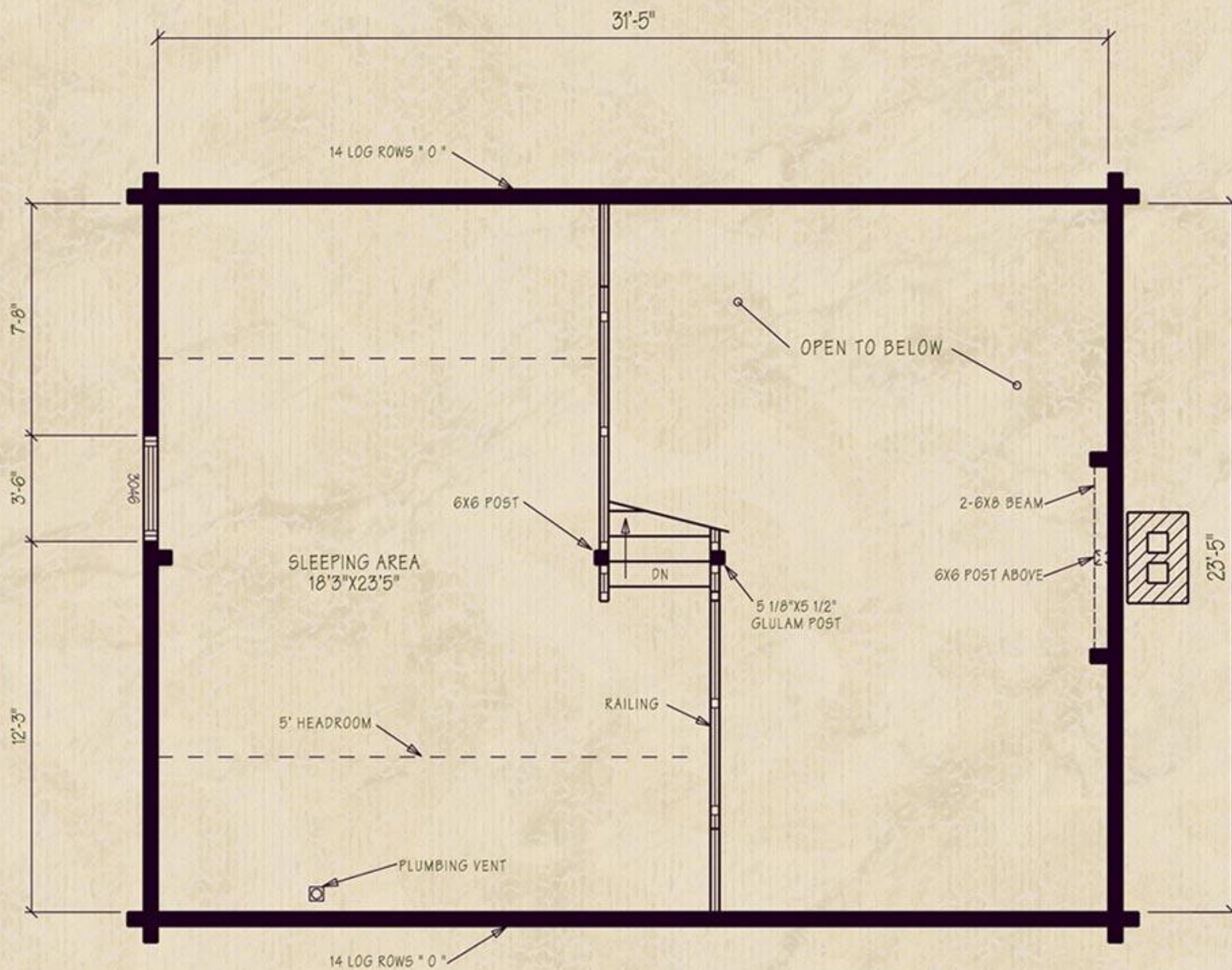
Remove the wall area at the right of the kitchen for more of a classic open concept plan

Don't forget--plan to finish your basement in the future and double your first floor square footage



Northeastern Log Homes

info@northeasternlog.com 800-624-2797 www.northeasternlog.com



LOFT PLAN



©2004 by NLH Inc

THIS PLAN IS COPYRIGHTED AND MAY NOT BE USED OR REPRODUCED WITHOUT WRITTEN PERMISSION FROM NORTHEASTERN LOG HOMES INC.

NO.		REVISION / CHANGE ORDER		DATE	BY	NOTED
WINDOWS		MODEL				
SPCL.	W/L	COLOR				
DOOR						
PROJECT NAME						
DATE		10-13-10		PLAN NO.		3017 NO.
SCALE						2