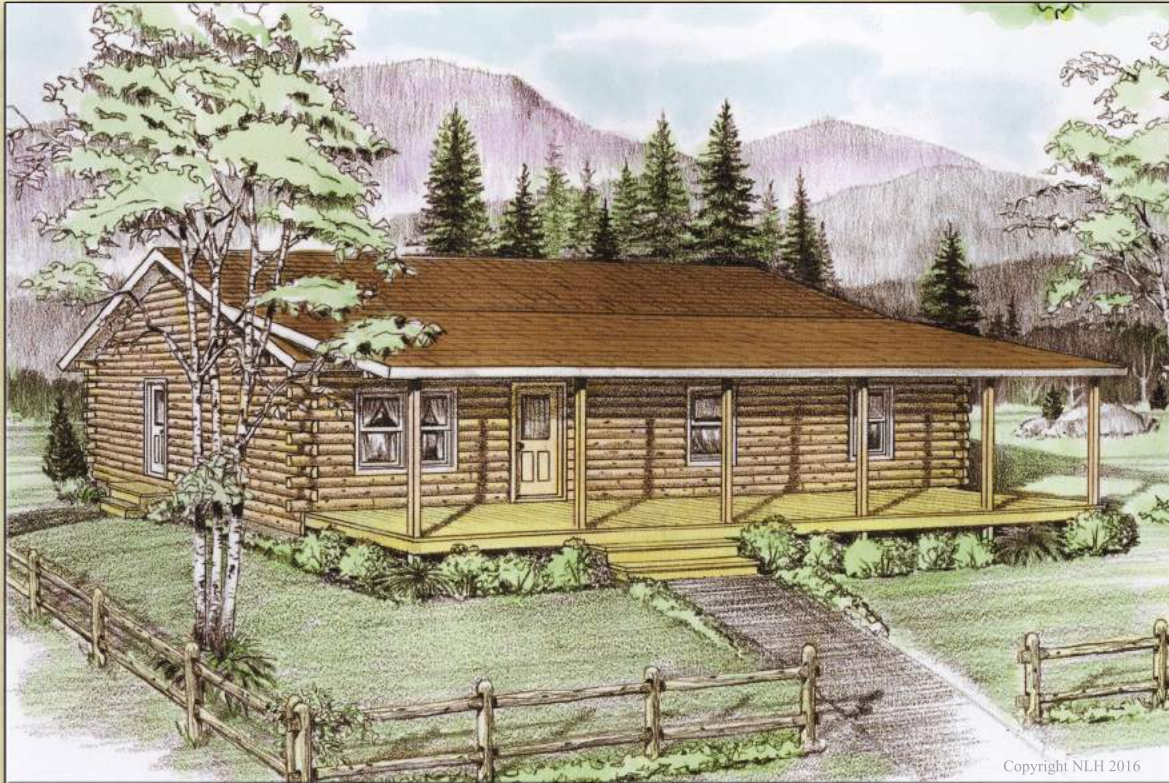




The Champlain



Traditional Home Series

26' x 45'

1,129 Square Feet

Two Bedrooms

Two Baths

The kitchen/dining/living room section of the Champlain features a vaulted ceiling with scissor trusses above and knotty pine v-match below. The bedroom wing is done in truss rafters with knotty pine v-match beneath. The upper gable end of the bedroom wing is designed and shown with log siding on the exterior.

Copyright NLH 2016

Optional Design Ideas:

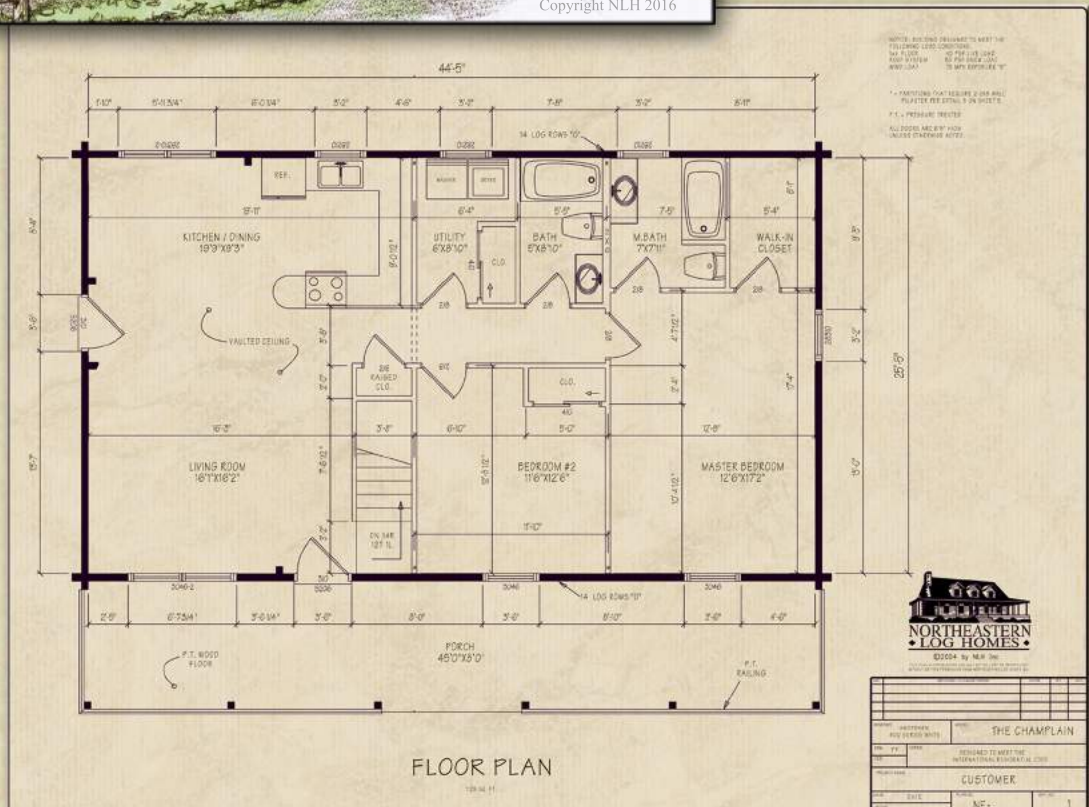
Make a small area of the utility closet accessible to the hall for additional closet space.

Part of closet in utility area can be designated for use as a pantry

Swing walk out closet door outward into bedroom for excellent use of closet area

Change the standard door on the right side of the Living Room to a Frenchwood

Add windows to the left sides of the Living Room to take advantage of your view!

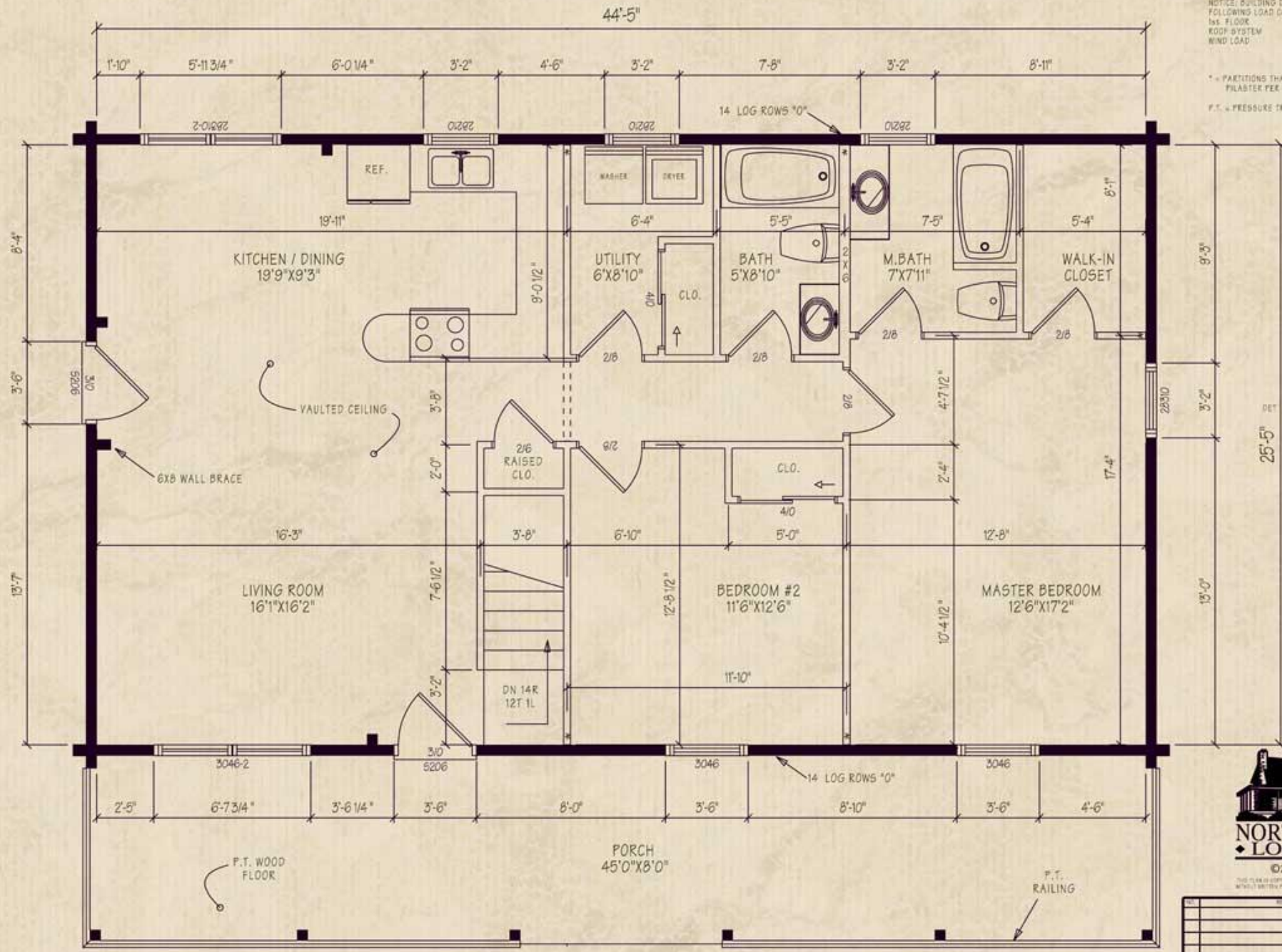


Northeastern Log Homes
info@northeasternlog.com 800-624-2797 www.northeasternlog.com

*Artist's rendering, photography & optional design ideas may vary from the standard model. Please always refer to the standard floorplan and consult the Traditional Home Series material list as to what is included.

NOTICE: BUILDING DESIGNED TO MEET THE FOLLOWING LOAD CONDITIONS:
 1st FLOOR 40 PSF LIVE LOAD
 ROOF SYSTEM 60 PSF SNOW LOAD
 WIND LOAD 75 MPH EXPOSURE "B"

* = PARTITIONS THAT REQUIRE 2-2X8 WALL PLASTER PER DETAIL 8 ON SHEET D.
 P.T. = PRESSURE TREATED



FLOOR PLAN

1129 SQ. FT.



©2004 by NLH Inc.
 THIS PLAN IS COPYRIGHTED AND MAY NOT BE COPIED OR REPRODUCED WITHOUT WRITTEN PERMISSION FROM NORTHEASTERN LOG HOMES INC.

SECTION / CHANGE ORDER		DATE	BY	CHK
DRAWN BY: ANDERSEN 400 SERIES WHITE		MODEL: THE CHAMPLAIN		
TYPE: P.P.	CODES:	DESIGNED TO MEET THE 2005 INTERNATIONAL RESIDENTIAL CODE		
PROJECT NAME: CUSTOMER				
DATE:	DATE:	PLAN NO:	SHEET NO.	
SCALE: 1/4" = 1'-0"		NE-	1	