

THE SUGARLOAF

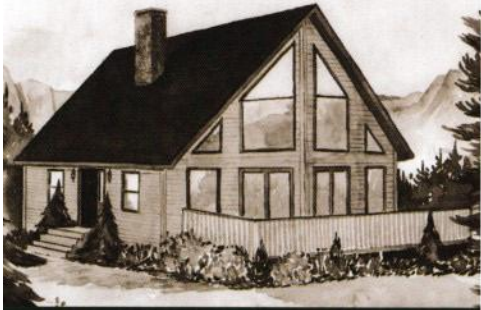


This one-and-a-half story glass prow-front is a perfect blend of contemporary design and old-fashioned comfort. Ideal as either a year-round or vacation home, The Sugarloaf features a spacious kitchen, plenty of storage space, and a handy loft space. The great room has a cathedral ceiling, a massive fireplace, and an adjacent front deck.

3 Bedrooms
2 Full Baths
Total Square Footage: 1,667 Sq. Ft.



THE SUGARLOAF

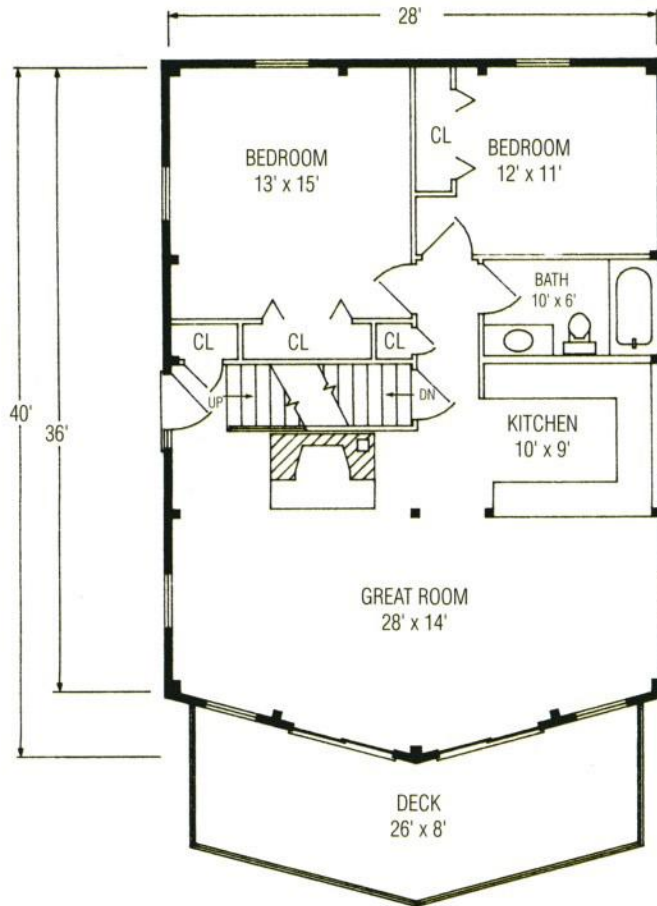


3 Bedrooms
2 Full Baths
Total Square Footage:
1,667 Sq. Ft.

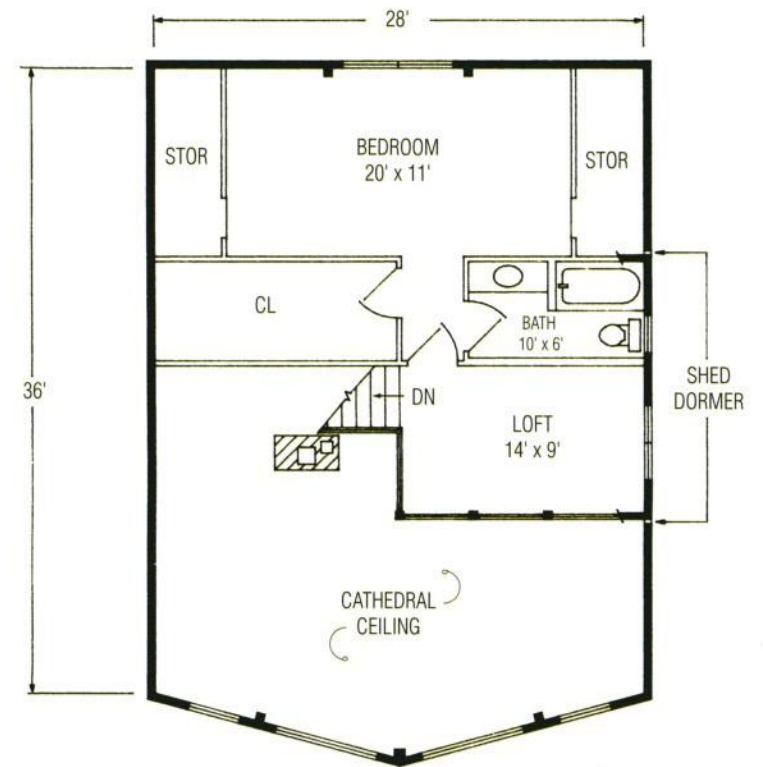


1-800-624-2797

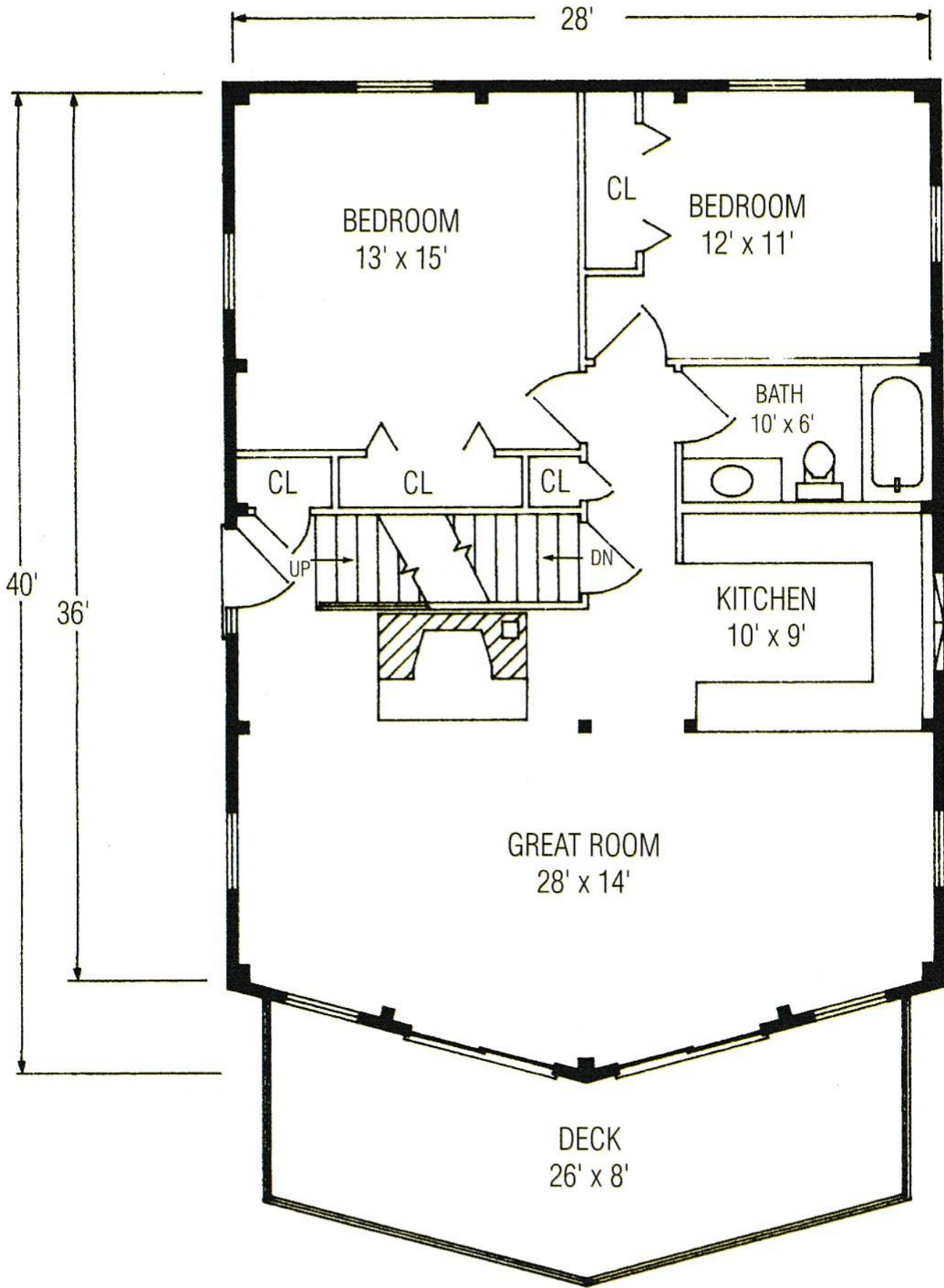
e-mail: info@classicpostandbeam.com
www.classicpostandbeam.com



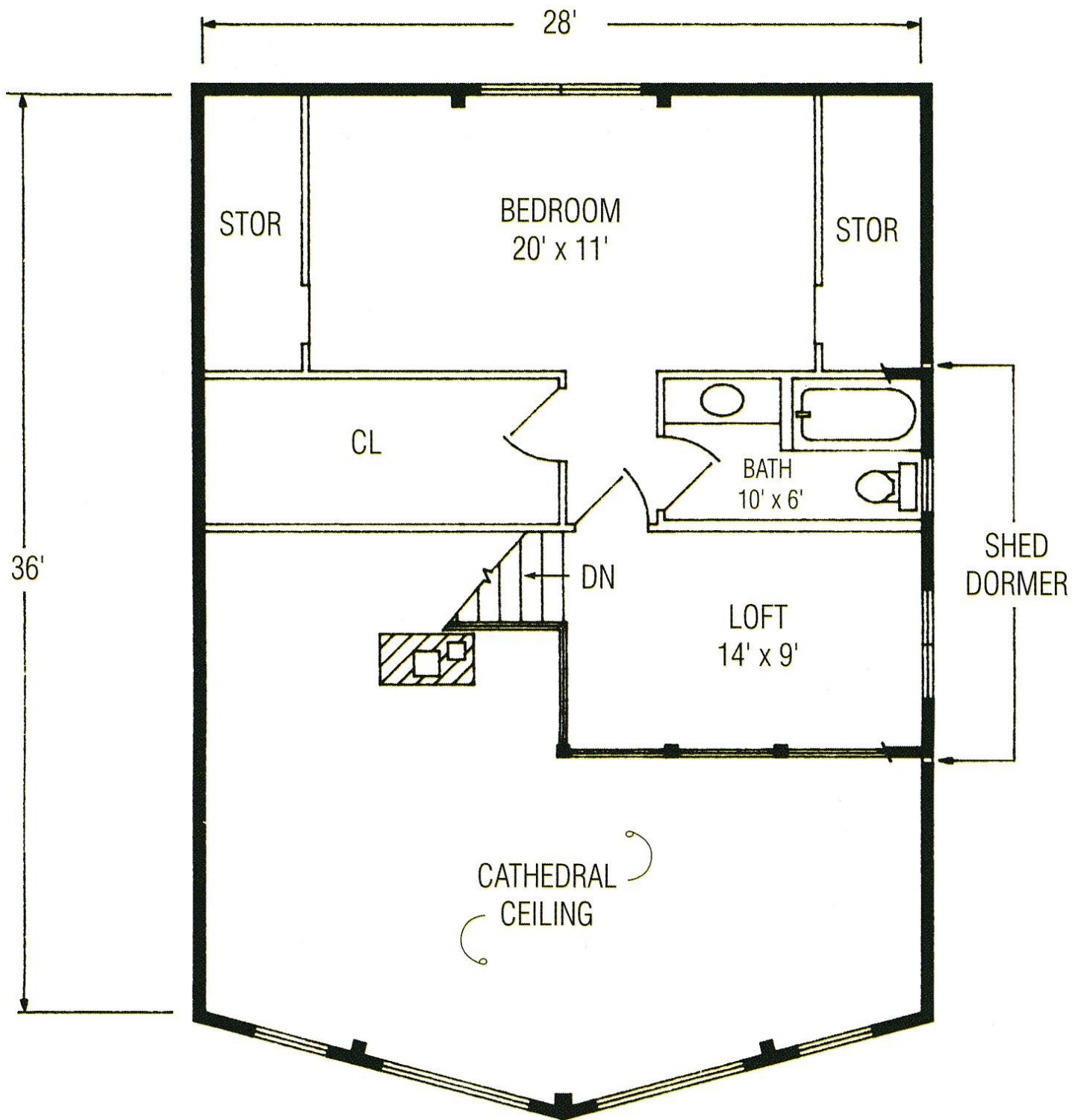
FIRST FLOOR 1,059 SQUARE FEET



SECOND FLOOR 608 SQUARE FEET



FIRST FLOOR 1,059 SQUARE FEET



SECOND FLOOR 608 SQUARE FEET