

CANTERBURY PLACE



A large porch across the front of the Canterbury Place adds outdoor comfort to this traditional farmhouse. The first-floor plan features an open living/dining area around a central fireplace as well as a kitchen and family room adjoining a full bath. French doors lead to a large back deck. Completing this comfortable home are a library, three bedrooms, and a full bath on the second floor.

3 Bedrooms
2 Full Baths
Total Square Footage: 2,227 Sq. Ft.



CANTERBURY PLACE

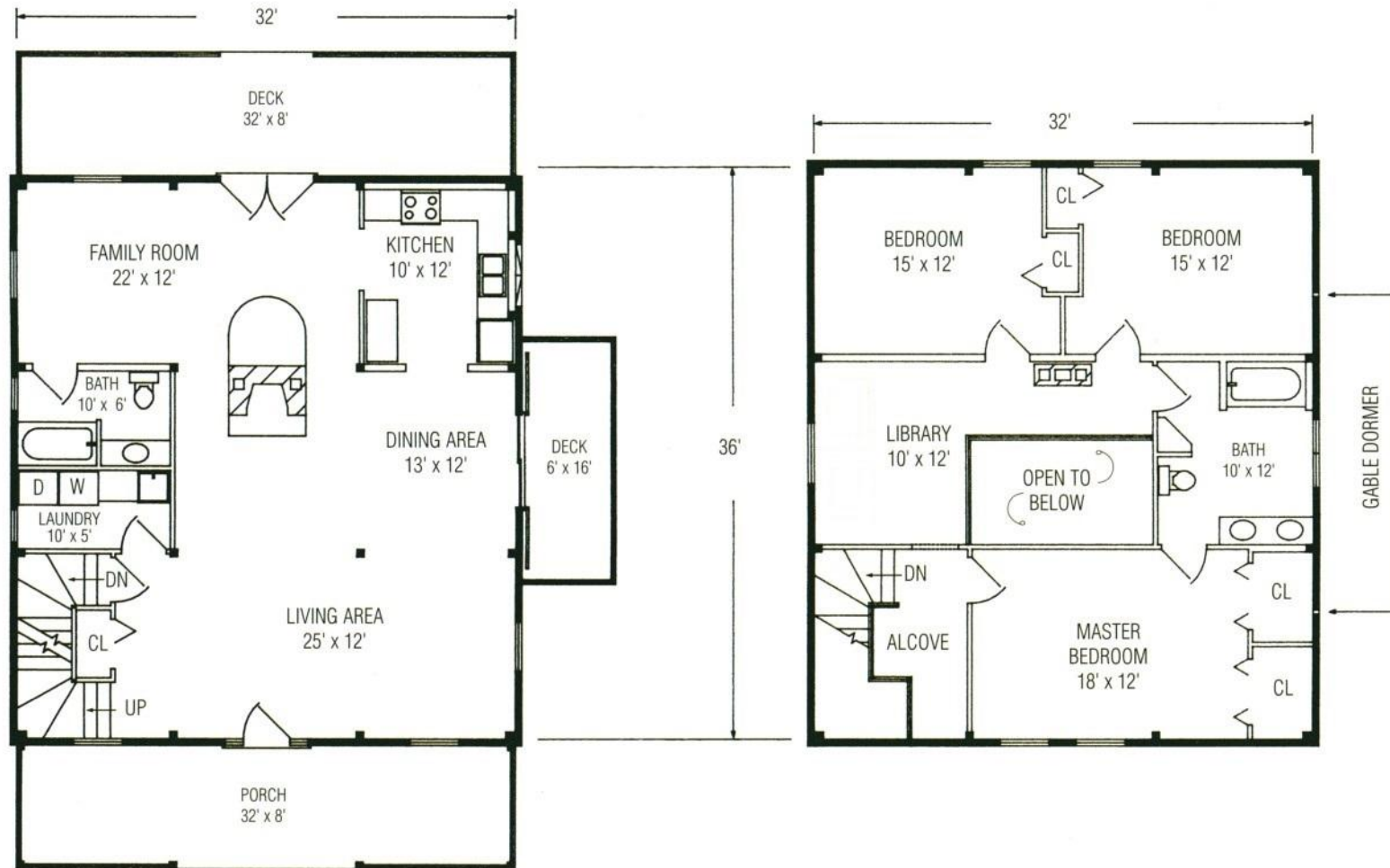


3 Bedrooms
2 Full Baths
Total Square Footage:
2,227 Sq. Ft.



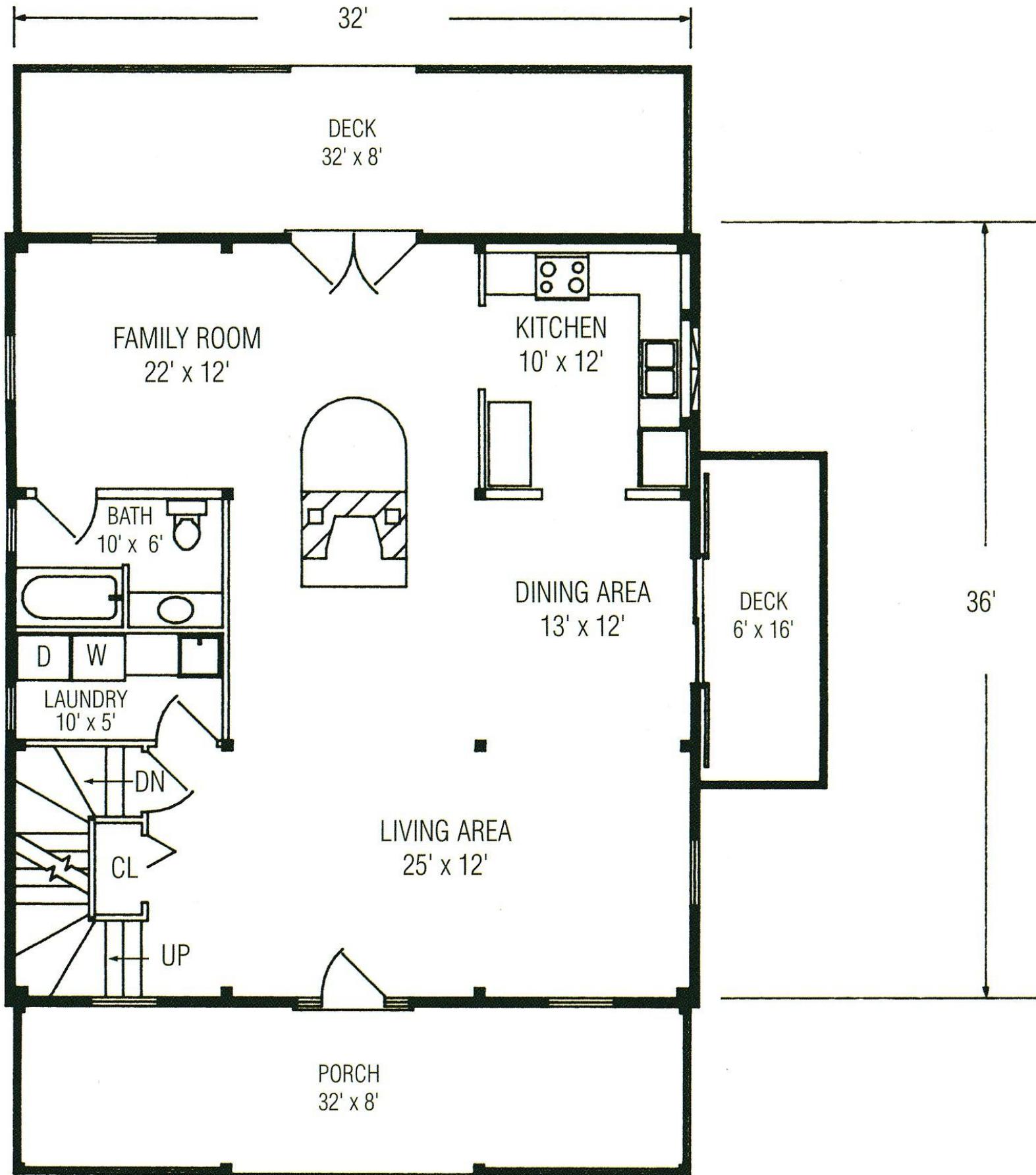
1-800-624-2797

e-mail: info@classicpostandbeam.com
www.classicpostandbeam.com



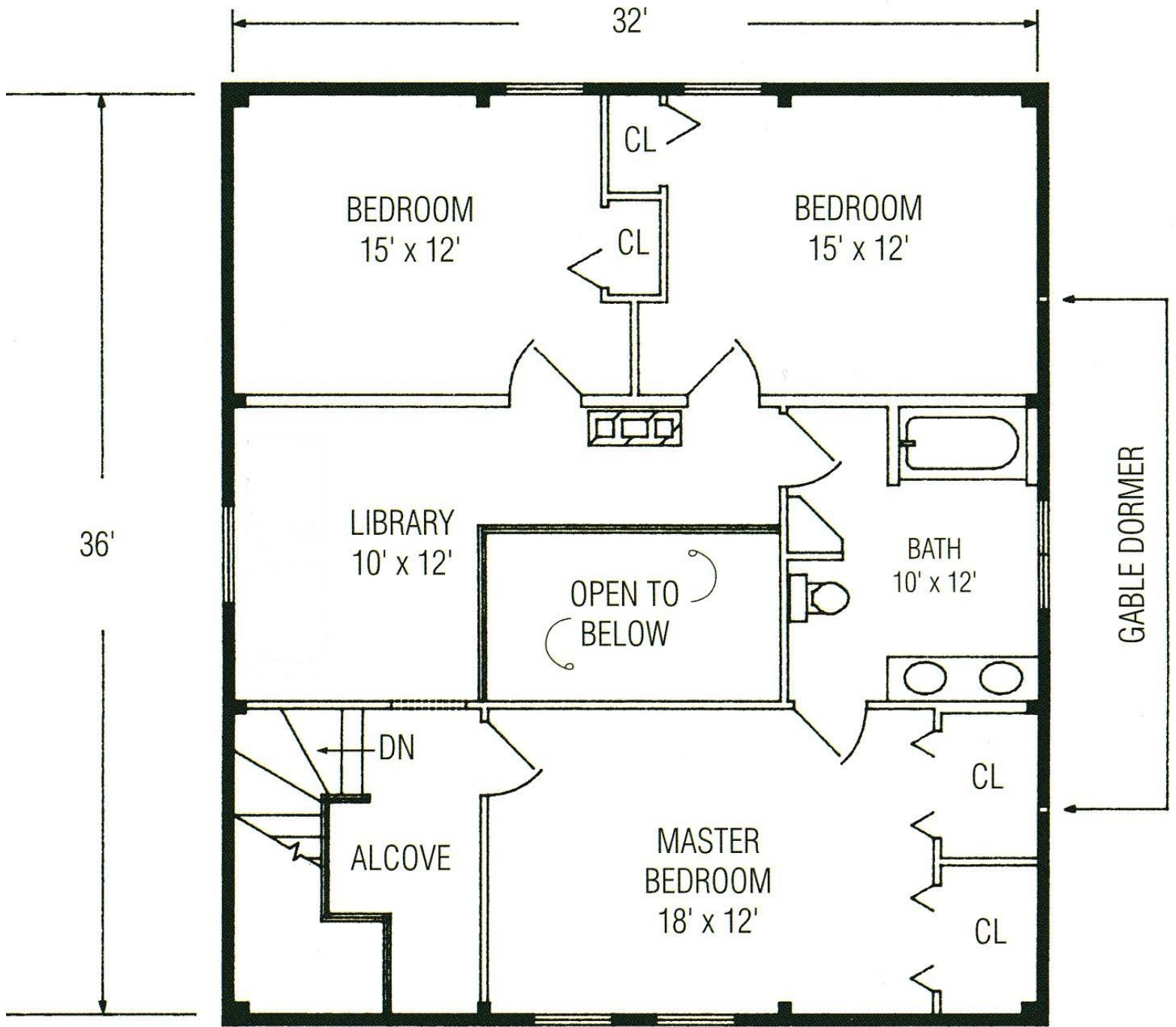
FIRST FLOOR 1,152 SQUARE FEET

SECOND FLOOR 1,075 SQUARE FEET



FIRST FLOOR 1,152 SQUARE FEET

SE



SECOND FLOOR 1,075 SQUARE FEET