

THE SEDGEWICK



The Sedgewick's large central fireplace is the focal point of the living room, which opens onto both a deck and a screened porch. The first-floor master bedroom features a walk-in closet and en-suite master bath. Off the dining room, a mudroom connects to a two-car garage. The second floor offers three bedrooms—two of which are located above the garage—two baths, an office, and a roomy lounge. Exterior features include a wraparound porch and front-facing gable dormers.

4 Bedrooms
3 Full Baths
1 Half Bath
Total Square Footage: 3,396 Sq. Ft.



THE SEDGEWICK



4 Bedrooms
3 Full Baths
1 Half Bath

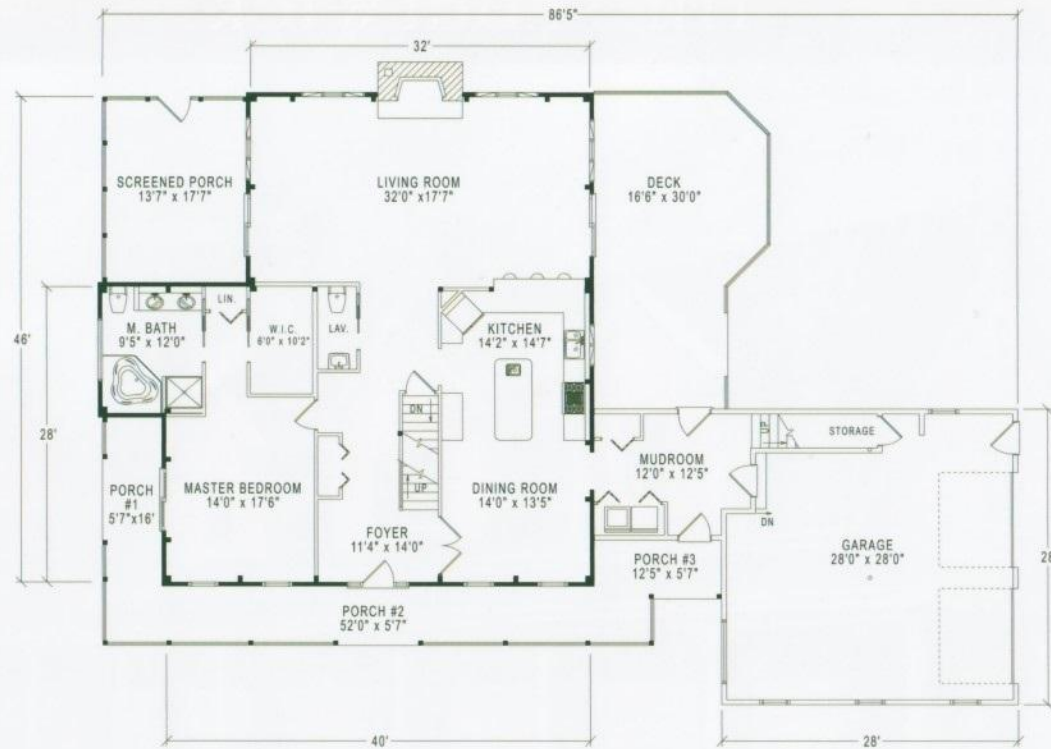
Total Square Footage:
3,396 Sq. Ft.

Package Price Shown
on PDF download

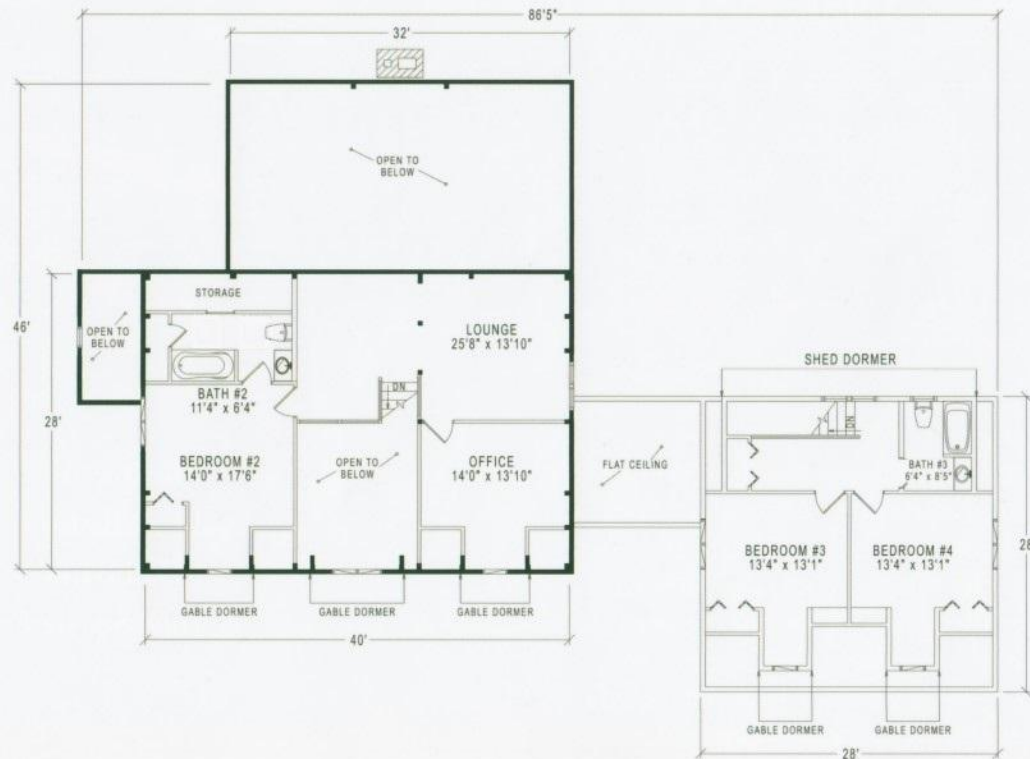


1-800-624-2797

e-mail: info@classicpostandbeam.com
www.classicpostandbeam.com



FIRST FLOOR
1,930 SQUARE FEET



SECOND FLOOR
1,466 SQUARE FEET

