

THE MONTPELIER



A wraparound porch and corner turret add interest to this charming three-level Victorian. The first-floor plan includes a fireplaced living room, a dining room opening onto the back deck, and a library, as well as a spacious kitchen and family room. A mudroom area, complete with laundry, leads from the kitchen to the two-car garage. Upstairs, the master bedroom suite features a large bathroom with a whirlpool tub. The third floor may be finished to provide additional living or storage space.

3 Bedrooms
2 Full Baths
1 Half Bath
Total Square Footage: 4,343 Sq. Ft.



THE MONTEPELIER



3 Bedrooms

2 Full Baths

1 Half Bath

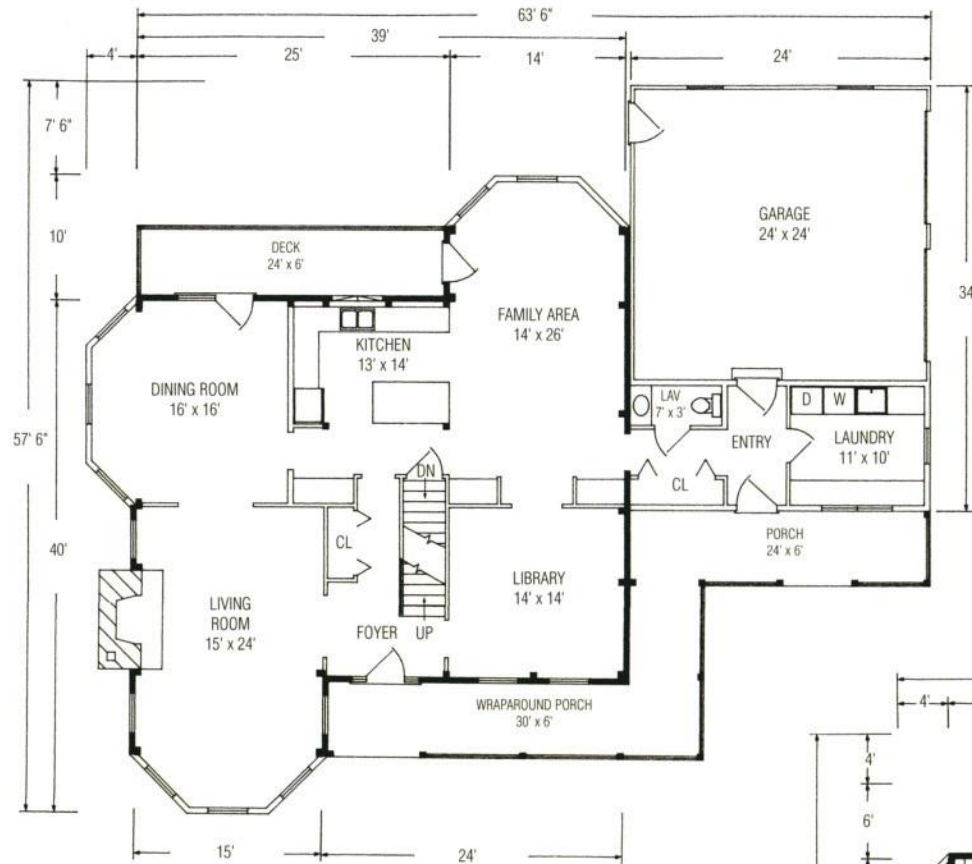
Total Square Footage:
4,343 Sq. Ft.

Package Price Shown
on PDF download

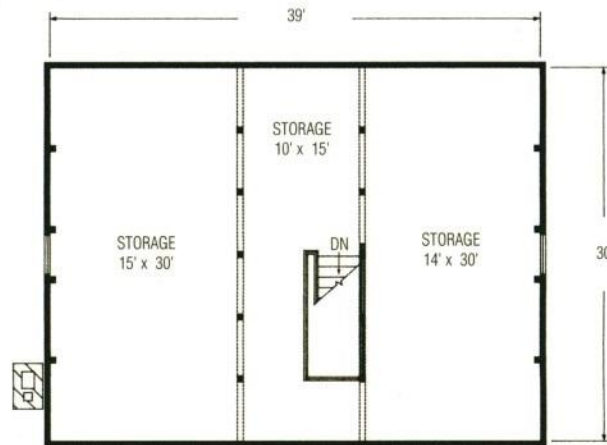


1-800-624-2797

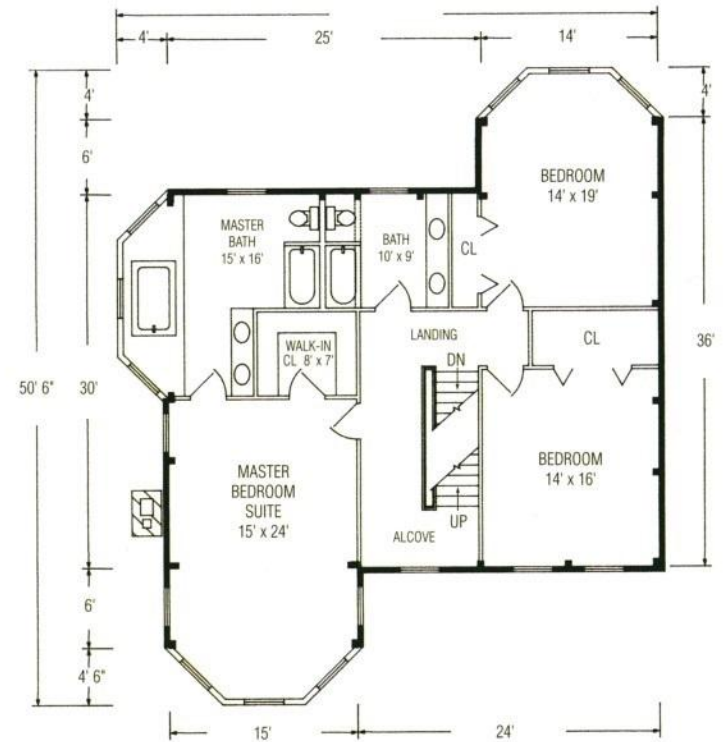
e-mail: info@classicpostandbeam.com
www.classicpostandbeam.com



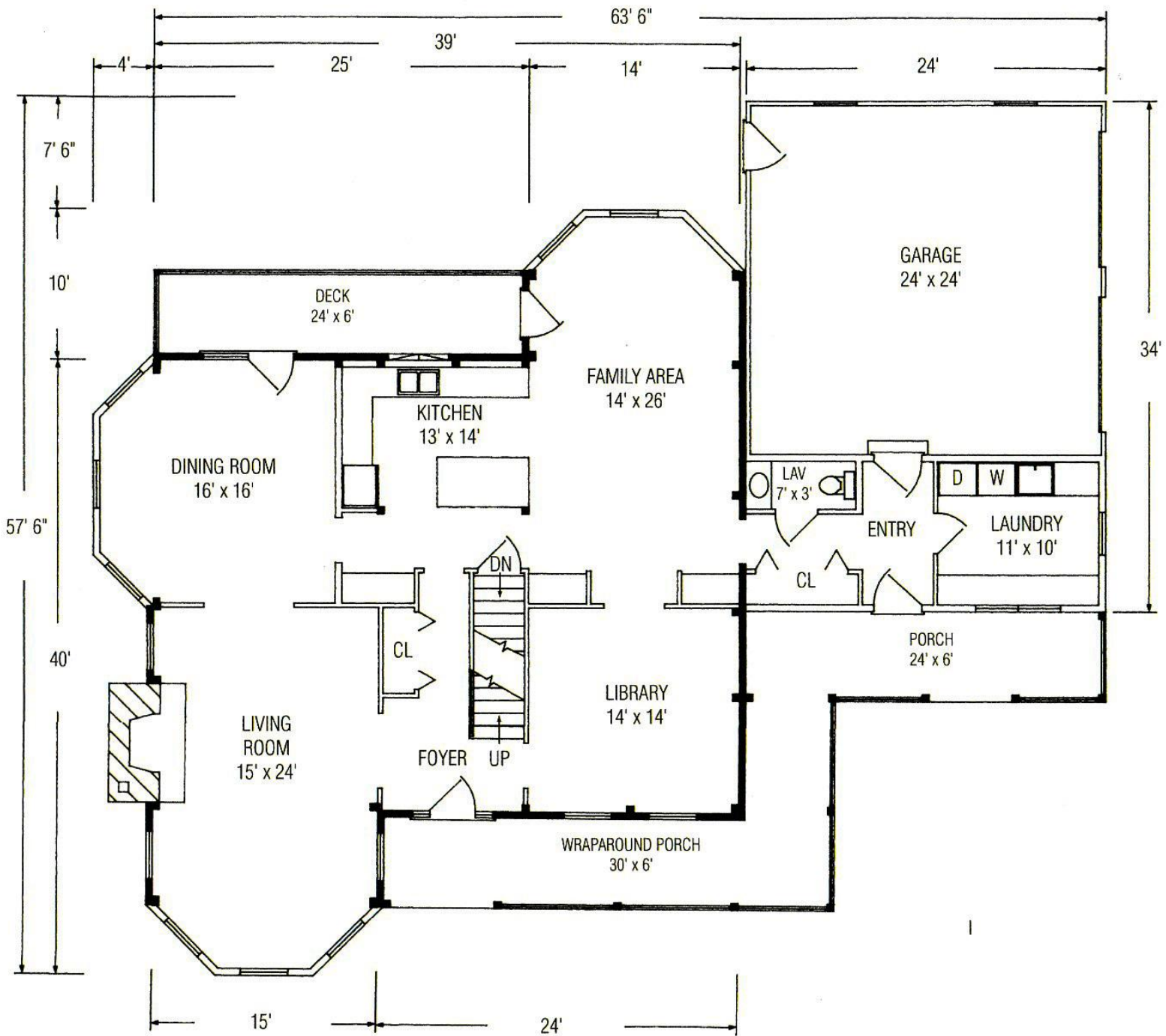
FIRST FLOOR 1,698 SQUARE FEET



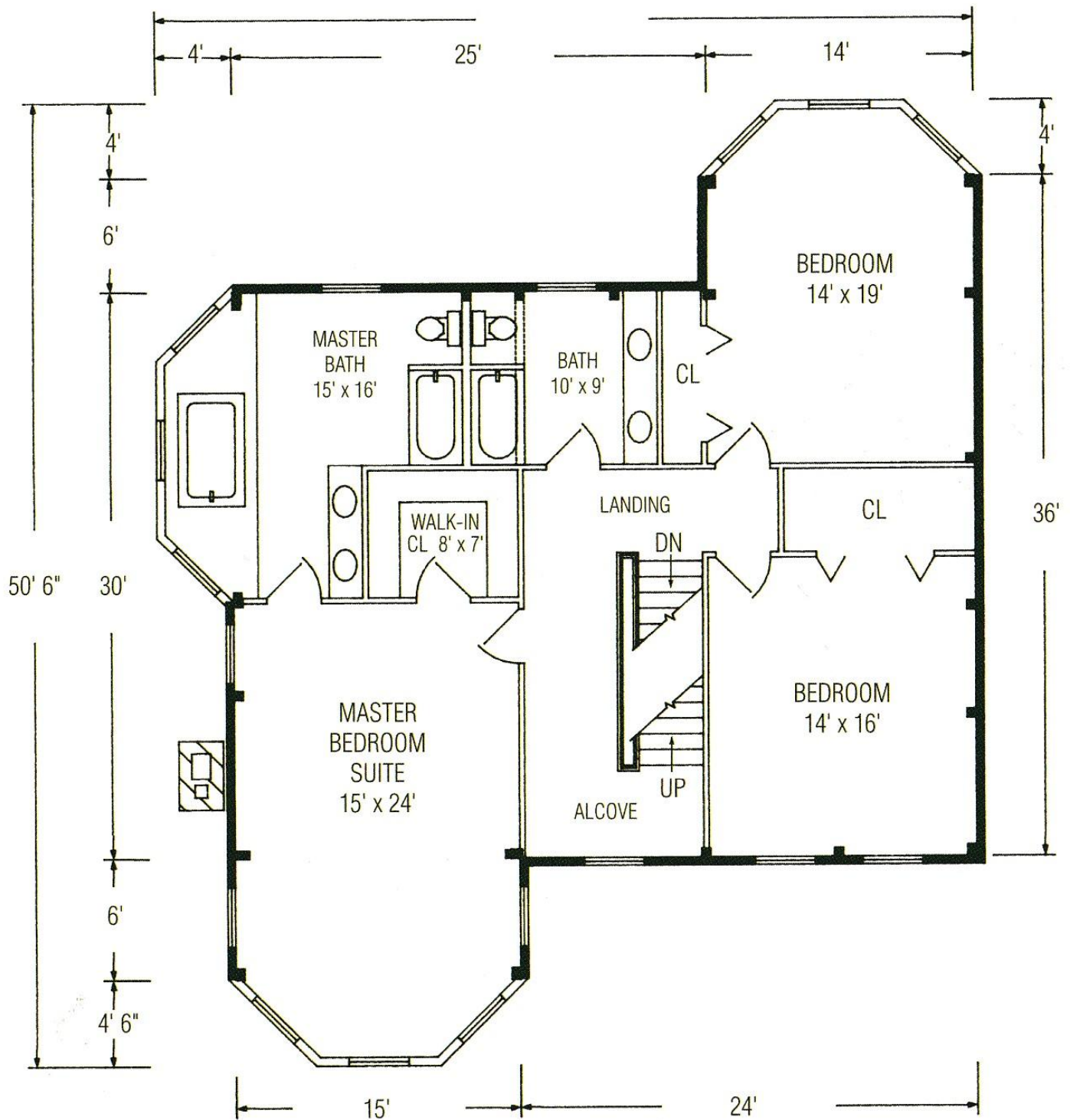
THIRD FLOOR 1,170 SQUARE FEET



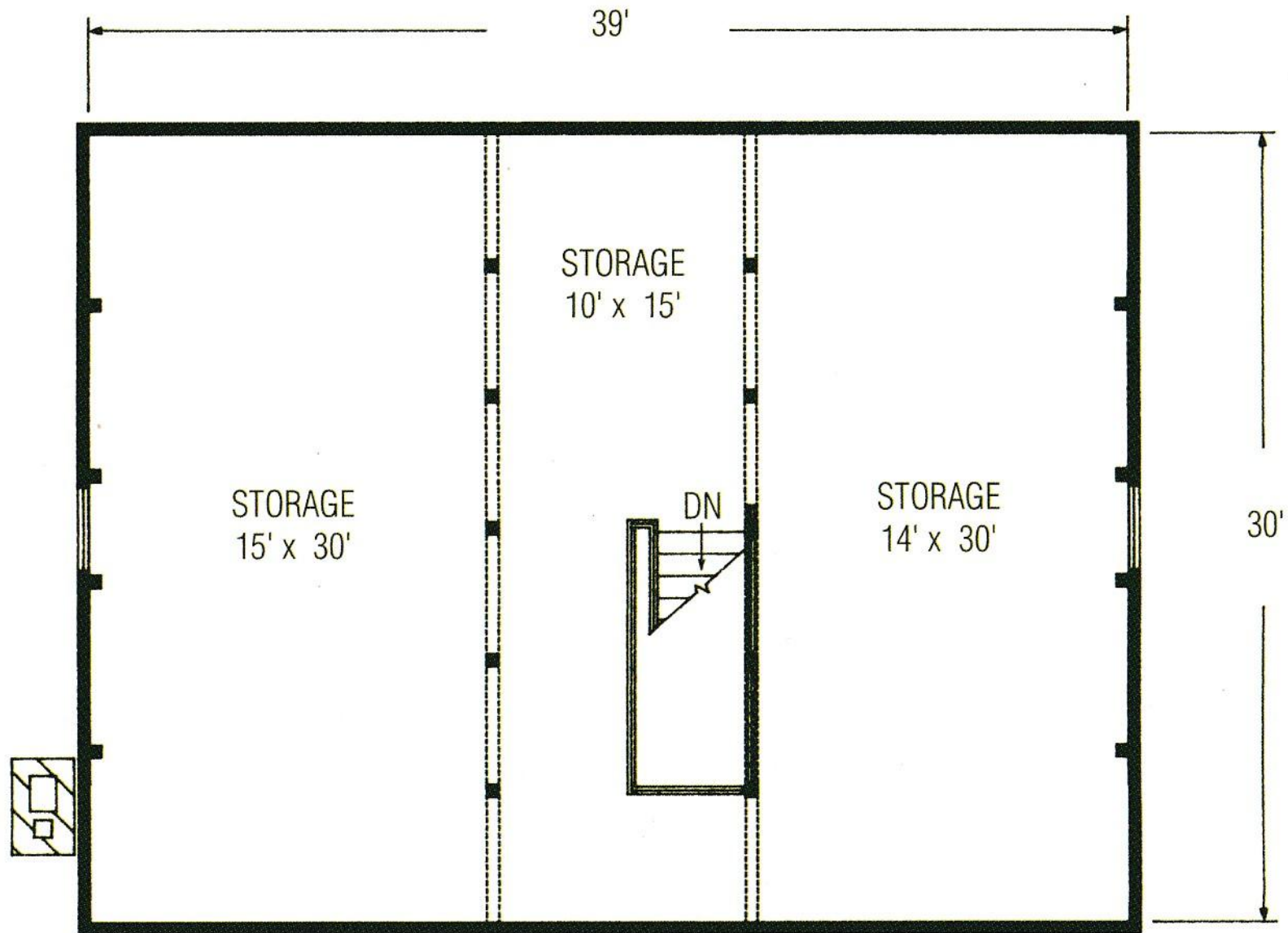
SECOND FLOOR 1,475 SQUARE FEET



FIRST FLOOR 1,698 SQUARE FEET



SECOND FLOOR 1,475 SQUARE FEET



THIRD FLOOR 1,170 SQUARE FEET