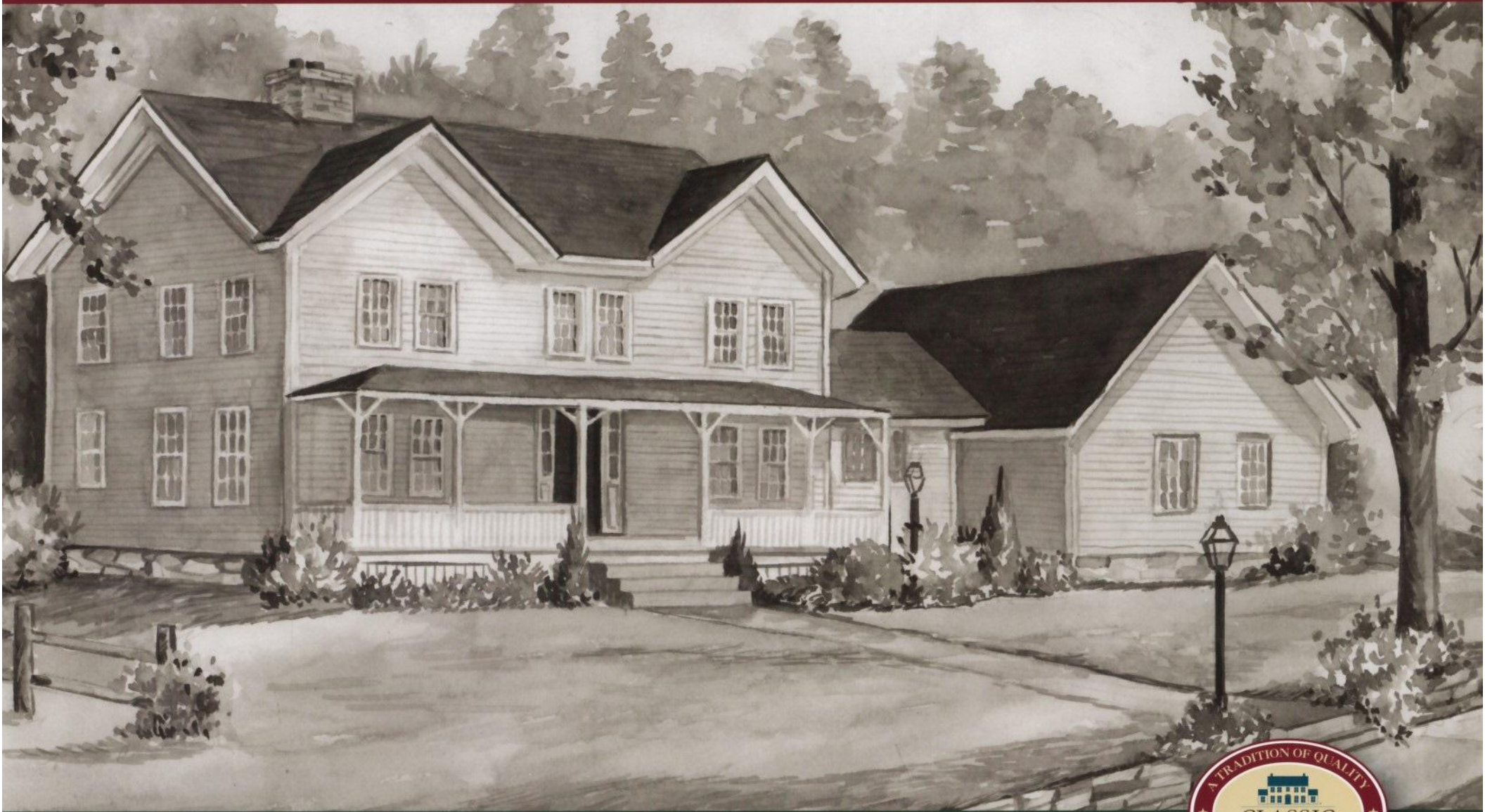


THE JAMESTOWN



A wide front porch adorns the front of this lovely two-story home with attached two-car garage. The first floor features a country kitchen with cathedral ceiling.

Off the kitchen, a sizeable room makes an ideal den or fourth bedroom. A two-and-a-half story cathedral ceiling adds dramatic effect to the living room. The master bedroom suite, also on the first floor, includes a full bathroom and large walk-in closet. Upstairs are two bedrooms and a full bath.

3-4 Bedrooms

2 Full Baths

1 Half Bath

Total Square Footage: 2,292 Sq. Ft.



THE JAMESTOWN

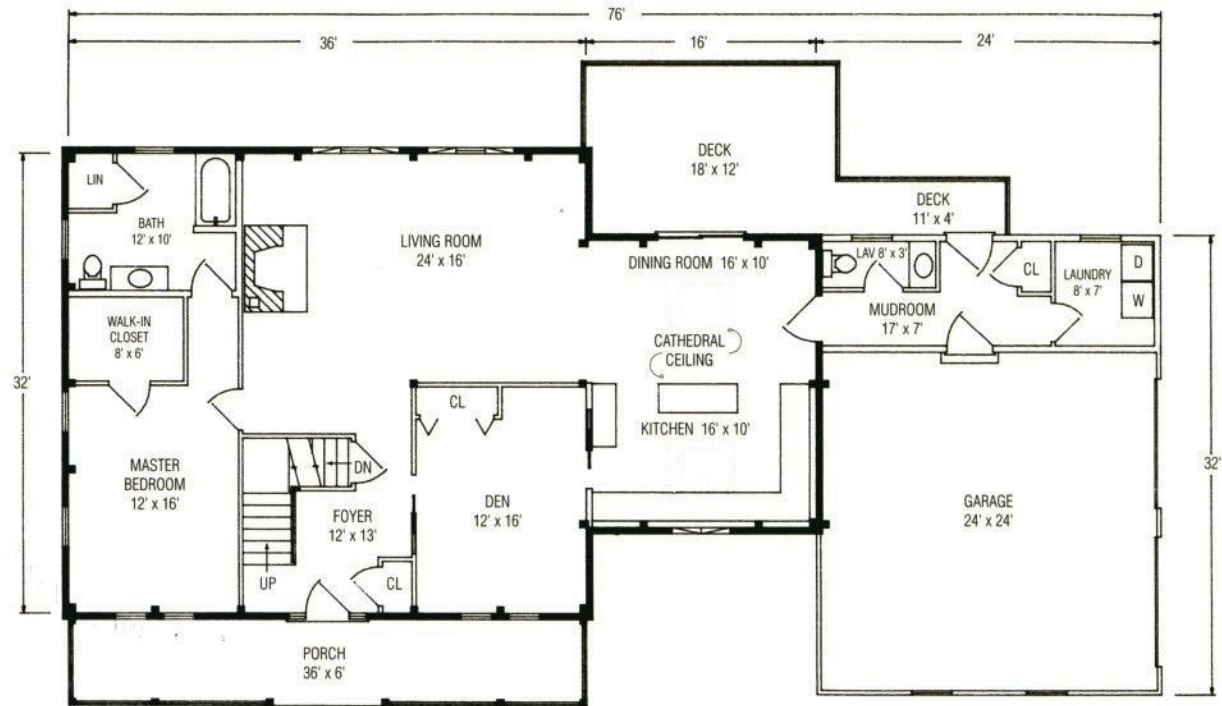


3-4 Bedrooms
 2 Full Baths
 1 Half Bath
 Total Square Footage:
 2,292 Sq. Ft.

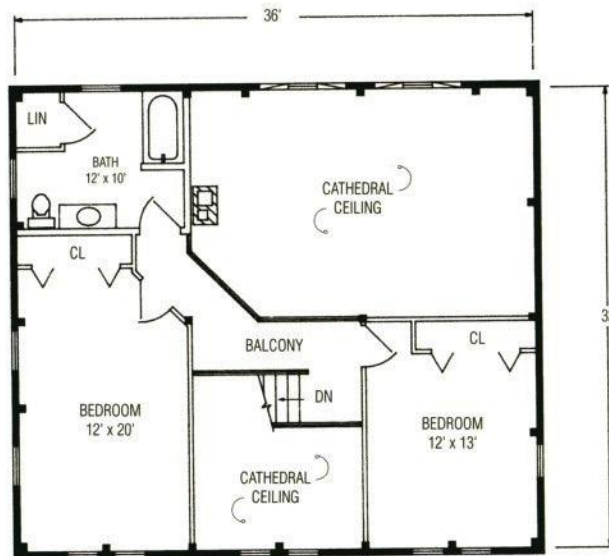


1-800-624-2797

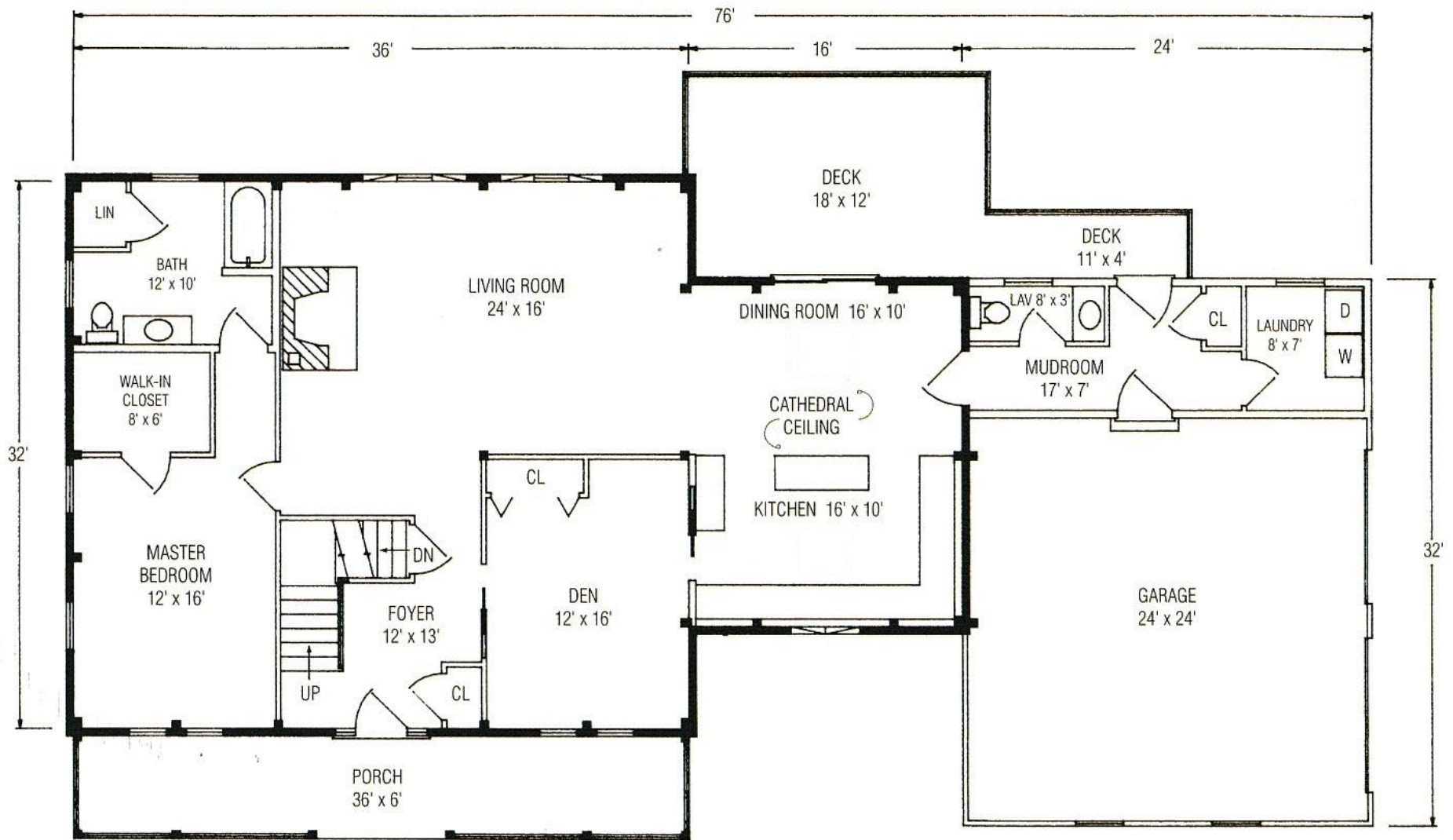
e-mail: info@classicpostandbeam.com
www.classicpostandbeam.com



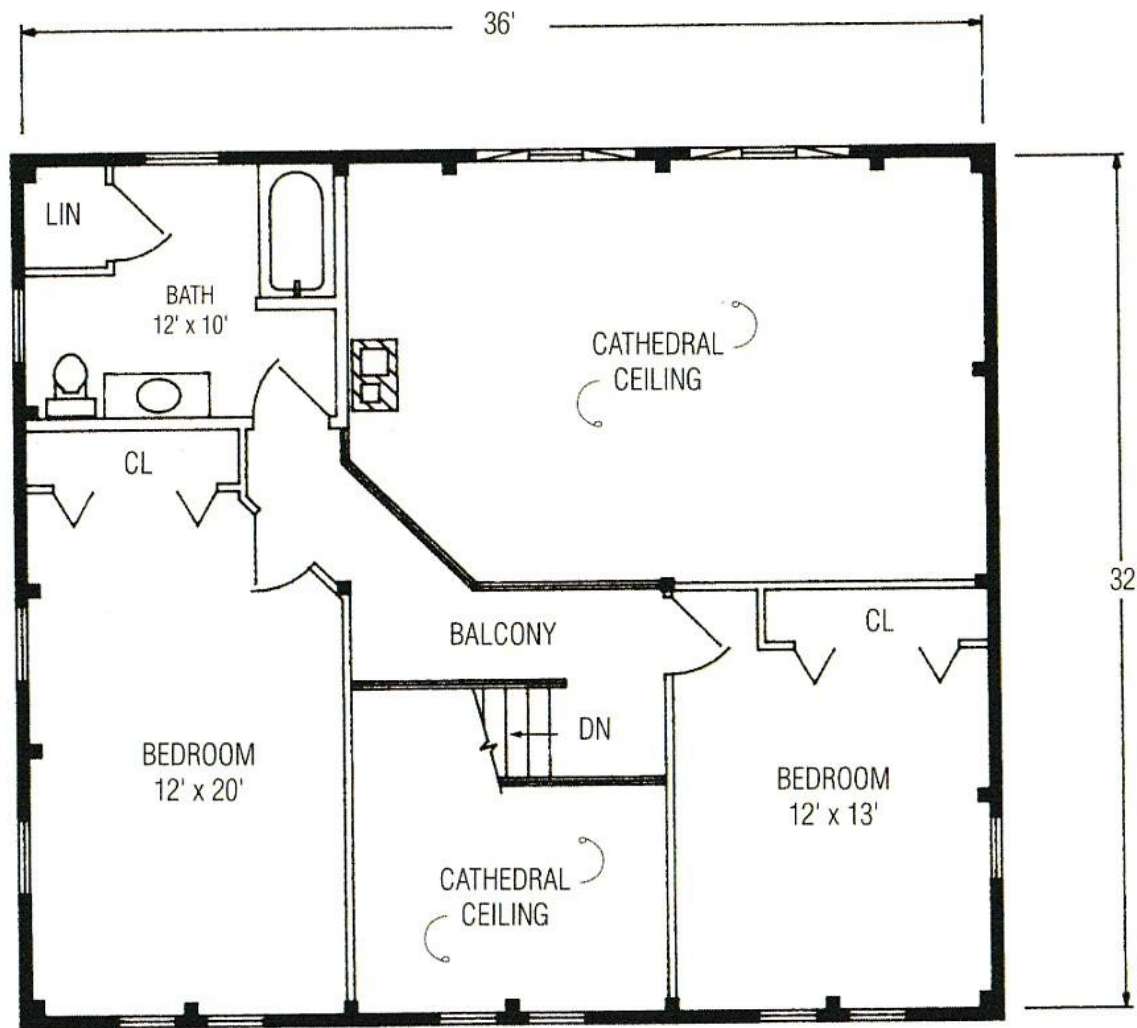
FIRST FLOOR 1,637 SQUARE FEET



SECOND FLOOR 655 SQUARE FEET



FIRST FLOOR 1,637 SQUARE FEET



SECOND FLOOR 655 SQUARE FEET