

THE FALMOUTH



This two-story home features a wraparound porch and two decks for outdoor living. Inside, the spacious open floor plan includes a large kitchen and dining room, and a double-sided fireplace opening onto the family room and living room. A central cathedral ceiling showcases the trusses and purlins overhead. The second floor offers a master bedroom suite with whirlpool and shower, two additional bedrooms, and a library. A roomy storage loft sits above the attached two-car garage.

3 Bedrooms
2 Full Baths
1 Half Bath
Total Square Footage: 2,768 Sq. Ft.



THE FALMOUTH



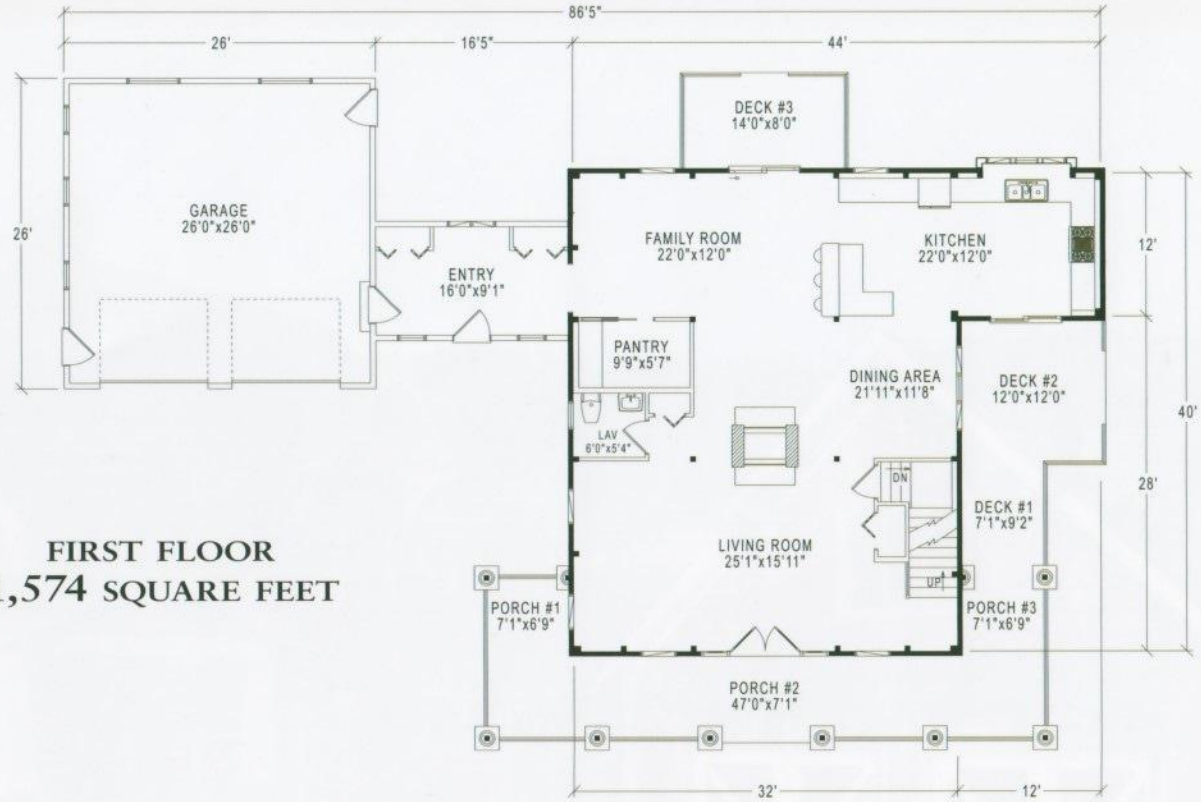
- 3 Bedrooms
- 2 Full Baths
- 1 Half Bath

Total Square Footage:
2,768 Sq. Ft.

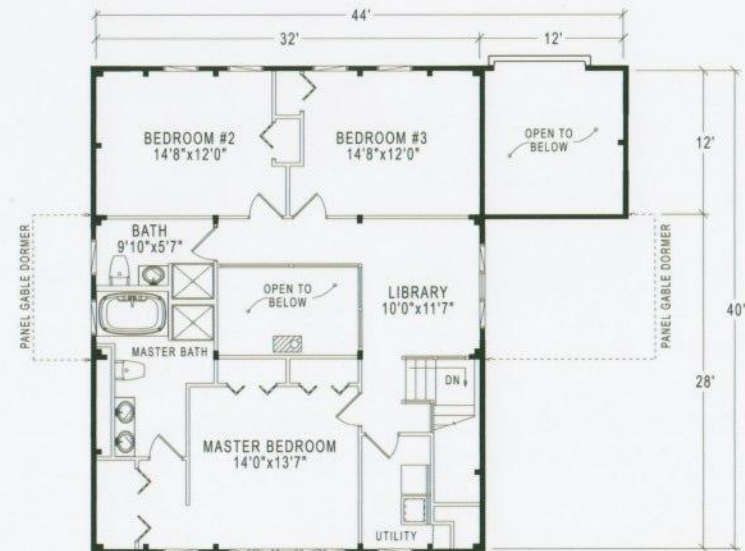


1-800-624-2797

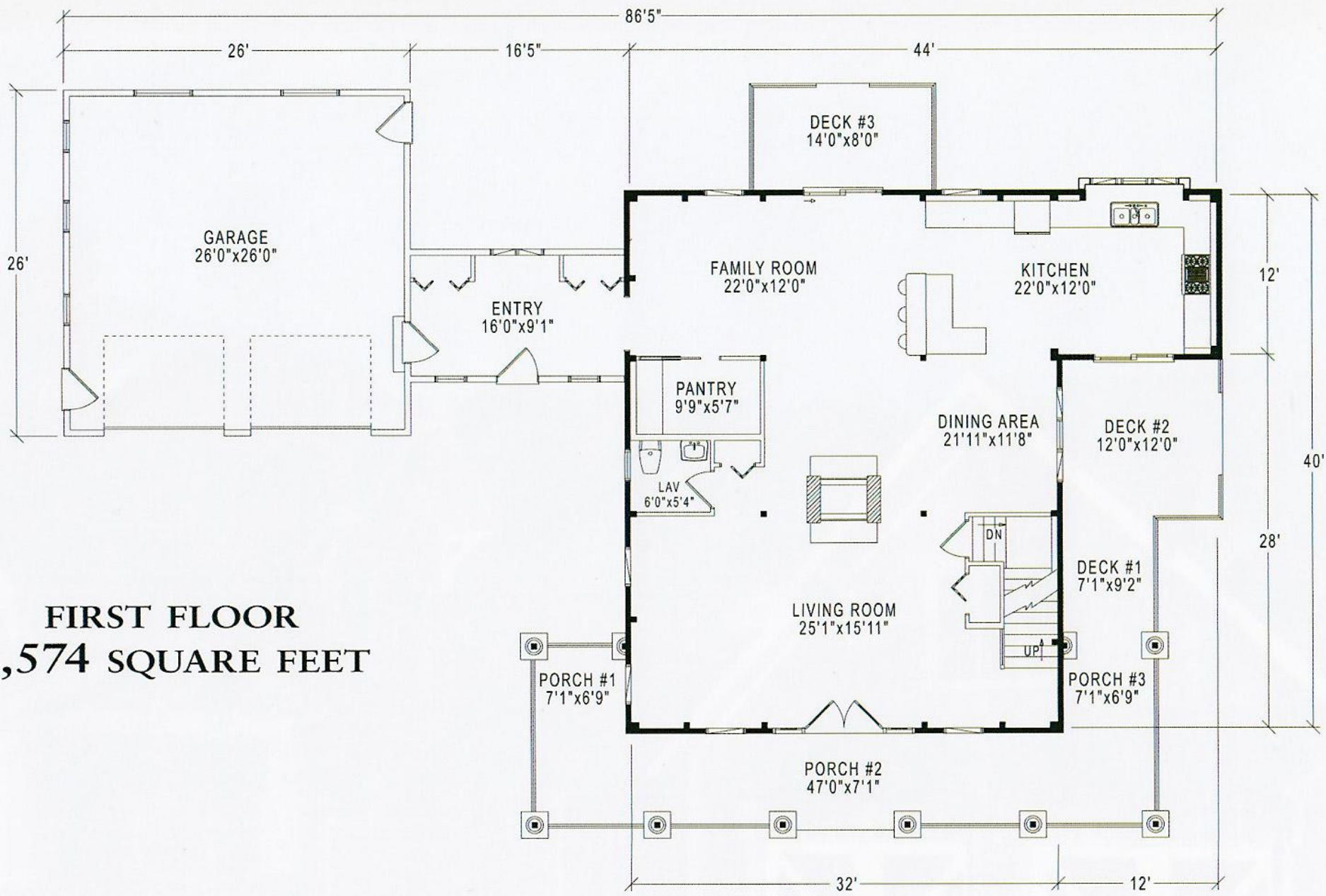
e-mail: info@classicpostandbeam.com
www.classicpostandbeam.com



FIRST FLOOR
1,574 SQUARE FEET



SECOND FLOOR
1,194 SQUARE FEET



FIRST FLOOR
1,574 SQUARE FEET



**SECOND FLOOR
1,194 SQUARE FEET**

